

UNIVERSITY OF CALIFORNIA, SANTA BARBARA

BERKELEY • DAVIS • IRVINE • LOS ANGELES • MERCED • RIVERSIDE • SAN DIEGO • SAN FRANCISCO



SANTA BARBARA • SANTA CRUZ

OFFICE OF DESIGN & CONSTRUCTION SERVICES and PHYSICAL FACILITIES

CONTRACTING SERVICES  
Building 439  
Santa Barbara, California 93106-1030  
Telephone (805) 893-3356  
Fax (805) 893-8592

**SENT VIA:**  FAX ON THIS DATE 10/10/07  
 HAND DELIVERY ON THIS DATE  
 FEDERAL EXPRESS ON THIS DATE 10/10/07  
 UNITED PARCEL SERVICE ON THIS DATE

HOLDERS OF PLANS AND SPECIFICATIONS:

Harold Frank Hall HVAC Upgrade Floors 1-5  
Project No. FM070432L/211-09  
**Addendum No. 2**

October 9, 2007

Enclosed is **ADDENDUM NO. 2** to the Construction Documents on the above-captioned project.

Bid date has been changed from Thursday, October 11, 2007 at 2:30 P.M. to **Tuesday, October 16, 2007 at 2:30 P.M.** to be held at:

CONTRACTING SERVICES  
Facilities Management, Bldg. 439,  
Door #E, Reception Counter  
University of California, Santa Barbara  
Santa Barbara, CA 93106-1030.

Late arrivals shall be disqualified. Please allow time for unforeseen traffic delays, securing a parking permit and potential parking problems.

A handwritten signature in black ink, appearing to read "Anna Galanis".

Anna Galanis  
Director, Contracting Services

ADDENDUM NUMBER 2  
to the  
CONSTRUCTION DOCUMENTS  
October 9, 2007

GENERAL

The following changes, additions, or deletions shall be made to the following document(s) as indicated; all other conditions shall remain the same.

I ADVERTISEMENT

Item No.

1. Second page, first sentence Change to read in it's entirety: "Bid Deadline: Sealed bids must be received on or before 2:30 PM on Tuesday, October 16, 2007. Contracting Services Facilities Management, Building 439 Door E, Reception Counter, University of California, Santa Barbara, Santa Barbara, California, 93106-1030."

II. SUPPLEMENTARY INSTURCTIONS TO BIDDERS

Item No.

1. Number 4. Change to read in its entirety: "Bid Deadline: Sealed bids must be received on or before 2:30 PM on Tuesday, October 16, 2007, and only at: Contracting Services Facilities Management, Building 439 Door E, Reception Counter, University of California, Santa Barbara, Santa Barbara, California, 93106-1030."

III. SPECIFICATIONS

Item No.

1. Section 01015 - "WORK SEQUENCE"; Part 1 General, Paragraph 1.01 Description, "D" **Add** the following:
  1. Refer to "Room Availability Schedule" at end of section, for times available to work in the specified areas. (Schedule Attached)
2. Section 01500 - "CONSTRUCTION FACILITIES AND TEMOPORARY CONTROLS"; Part 3 Execution, Paragraph 3.04 Temporary Construction and Support Facilities Installation, "C" **Omit** the following:
  7. Provide an operating field office for the sole use of University's Representative complete with the following equipment and furnishings within two weeks from Notice to Proceed.....

3. Section 16130 – “RACEWAYS AND BOXES”; Part 1 General, Paragraph 1.03 System Description; **Add** the following:
  - D. Raceway shall be concealed in walls or above ceilings unless specifically noted as surface mounted raceway. Provide additional demolition and repair to walls and ceilings where required to provide the raceway, junction boxes, supports, and mounting hardware required by the Drawings and Specifications.

V. DRAWINGS

Item No.

1. SHEET T1.0 – “PROJECT TITLE SHEET, SYMOBLS, ABBREV., GENERAL NOTES AND BLDG. ANAYSIS”; **Replace** sheet with attached revised drawing T1.0 revised date 10/2/07.
2. SHEET A2.2 - “THIRD FLOOR CEILING DEMOLITION & REPLACEMENT PLAN”; **Replace** sheet with attached revised drawing A2.2 revise date 9/27/07.
3. SHEET M1.0 – “MECHANICAL SCHEDULE”; **Replace** with attached revised drawing M1.0 revised date 9/27/07.
4. SHEET M1.1- “MECHANICAL SCHEDULES & AIR HANDLER DIMENSIONS”; **Replace** with attached revised drawing M1.1 revised date 9/27/07.
5. SHEET M2.2 – “MECHANICAL THIRD FLOOR DEMOLITION PLAN”; **Replace** with attached revised drawing M2.2 revised date 9/27/07.
6. SHEET M2.3 – “MECHANICAL FOURTH FLOOR DEMOLITION PLAN”; **Replace** with attached revised drawing M2.3 revised date 9/27/07.
7. SHEET M3.0 – “MECHANICAL FIRST FLOOR REMODEL PLAN”; **Replace** with attached revised drawing M3.0 revised date 9/27/07.
8. SHEET M3.1 – “MECHANICAL SECOND FLOOR REMODEL PLAN”; **Replace** with attached revised drawing M3.1 revised date 9/27/07.
9. SHEET M3.2 – “MECHANICAL THIRD FLOOR REMODEL PLAN”; **Replace** with attached revised drawing M3.2 revised date 9/27/07.
10. SHEET M3.3 – “MECHANICAL FOURTH FLOOR REMODEL PLAN”; **Replace** with attached revised drawing M3.3 revised date 9/27/07.
11. SHEET M3.4 – “MECHANICAL FIFTH FLOOR REMODEL PLAN”; **Replace** with attached revised drawing M3.4 revised date 9/27/07.

12. SHEET M5.0 – “MECHANICAL DETAILS AND ELEVATIONS”; **Replace** with attached revised drawing M5.0 revised date 9/27/07.
13. SHEET E1.0 – “SYMBOLS, SINGLE LINE DIAGRAM AND PANEL SCHEDULES”; **Revise** “(N) Panel 6A” with sketch SK-01 “panel schedule 6A” dated 10/2/07.
14. SHEET E2.1 – “FIRST FLOOR POWER AND SIGNAL PLAN”; **Revise** electrical key notes to add note #17 see attached sketch SK-02 “partial first floor power and signal plan” dated 10/20/07.
15. SHEET E2.1 – “FIRST FLOOR POWER AND SIGNAL PLAN”; **Revise** electrical key notes to add note #18 see attached sketch SK-02 “partial first floor power and signal plan” dated 10/20/07.
16. SHEET E2.2 – “SECOND FLOOR POWER AND SIGNAL PLAN”; **Revise** additional electrical work see attached sketch SK-03 “partial second floor power and signal plan” dated 10/2/07.
17. SHEET E2.3 – “THIRD FLOOR POWER AND SIGNAL PLAN”; **Revise** electrical key notes to add note #17 see attached sketch SK-04 “partial third floor power and signal plan” dated 10/2/07.
18. SHEET E2.3 – “THIRD FLOOR POWER AND SIGNAL PLAN”; **Revise** electrical key notes to add note #18 see attached sketch SK-04 “partial third floor power and signal plan” dated 10/2/07.
19. SHEET E2.4 – “FOURTH FLOOR POWER AND SIGNAL PLAN”; **Revise** additional electrical work see attached sketch SK-05 “partial fourth floor power and signal plan” dated 10/2/07.
20. SHEET E2.5 – “FIFTH FLOOR POWER AND SIGNAL PLAN”; **Revise** additional electrical work see attached sketch SK-06 “partial fifth floor power and signal plan” dated 10/2/07.
21. SHEET E2.6 – “PENTHOUSE POWER AND SIGNAL PLAN”; **Revise** electrical key notes to add note #17 see attached sketch SK-07 “partial penthouse power and signal plan” dated 10/2/07.
22. SHEET E2.6 – “PENTHOUSE POWER AND SIGNAL PLAN”; **Revise** electrical key notes to add note #18 see attached sketch SK-07 “partial penthouse power and signal plan” dated 10/2/07.

END OF ADDENDUM NO. 2

<b>Fall Quarter 2007</b>		Classes: 9/27/07-12/15/07		Break: 12/16/07-1/6/08		Available for Contractor	
--------------------------	--	---------------------------	--	------------------------	--	--------------------------	--

Room #	Monday	Tuesday	Wednesday	Thursday	Friday	Sat/Sun
1104	TBD	TBD	TBD	TBD	TBD	TBD
1124	6am-10am; 1pm-3pm	6am-2pm	6am-3pm	6am-3pm	6am-3pm	negotiable
1138/1140	6am-9am	6am-9am	6am-9am	6am-9am	6am-9am	negotiable
3120A	6am-3pm	6am-2pm	6am-3pm	6am-3pm	6am-3pm	negotiable
4152	6am-3pm	6am-3pm	6am-3pm	6am-3pm	6am-3pm	negotiable
5160	6am-3pm	6am-3pm	6am-3pm	6am-3pm	6am-3pm	negotiable
5162C	6am-3pm	6am-3pm	6am-3pm	6am-3pm	6am-12pm	negotiable
5162D	6am-3pm	6am-3pm	6am-3pm	6am-3pm	6am-3pm	negotiable

<b>Winter Quarter 2008</b>		Classes: 1/7/08-3/22/08		Break: 3/23/08-3/30/08		Available for Contractor	
----------------------------	--	-------------------------	--	------------------------	--	--------------------------	--

Room #	Monday	Tuesday	Wednesday	Thursday	Friday	Sat/Sun
1104	TBD	TBD	TBD	TBD	TBD	TBD
1124	6am-3pm	6am-2pm	6am-1pm	6am-3pm	6am-3pm	negotiable
1138/1140	6am-9am	6am-9am	6am-9am	6am-9am	6am-9am	negotiable
3120A	6am-3pm	6am-3pm	6am-2pm	6am-3pm	6am-3pm	negotiable
4152	6am-3pm	6am-3pm	6am-3pm	6am-3pm	6am-3pm	negotiable
5160	6am-3pm	6am-3pm	6am-3pm	11am-3pm	6am-11am	negotiable
5162C	6am-3pm	6am-3pm	6am-12pm	6am-3pm	6am-9am; 12pm-3pm	negotiable
5162D	6am-2pm	6am-3pm	6am-3pm	6am-3pm	6am-3pm	negotiable

<b>Spring Quarter 2008</b>		Classes: 3/31/08-6/13/08		Break: 6/14/08-6-22/08		Available for Contractor	
----------------------------	--	--------------------------	--	------------------------	--	--------------------------	--

Room #	Monday	Tuesday	Wednesday	Thursday	Friday	Sat/Sun
1104	TBD	TBD	TBD	TBD	TBD	TBD
1124	6am-12pm	6am-12pm	6am-12pm	6am-12pm	6am-12pm	negotiable
1138/1140	6am-9am	6am-9am	6am-9am	6am-9am	6am-9am	negotiable
3120A	6am-3pm	6am-3pm	6am-1pm	6am-3pm	6am-3pm	negotiable
4152	6am-3pm	6am-3pm	6am-3pm	6am-3pm	6am-3pm	negotiable
5160	6am-3pm	6am-2pm	6am-2pm	6am-3pm	6am-9am; 12pm-3pm	negotiable
5162C	6am-9am	6am-3pm	6am-9am	11am-3pm	6am-3pm	negotiable
5162D	6am-3pm	6am-3pm	6am-3pm	6am-3pm	6am-3pm	negotiable

Summer Quarter 2008		Break: 9/13/08-9/24/08		Available for Contractor				
Classes: 6/23/08-9/12/08								
Room #	Monday	Tuesday	Wednesday	Thursday	Friday	Sat/Sun		
1104	TBD	TBD	TBD	TBD	TBD	TBD		
1124	6am-3pm	6am-2pm	6am-3pm	6am-2pm	6am-3pm	negotiable		
5160	6am-3pm	6am-2pm	6am-3pm	6am-2pm	6am-3pm	negotiable		

Note: Every effort has been made to present an accurate schedule. However, due to changes that occur during the academic year, this calendar is subject to change.

BUS: 225A, 480V, 3PH, 3W  
 SQUARE D 110N W/ 45" OF  
 CIRCUIT BREAKER SPACE

(N) PANEL "6A"

MOUNTING: SURFACE  
 REXNA 318

CIRCUIT	A			B			C			CIRCUIT NUMBER	C.B.	A	B	C	CIRCUIT																										
	1	2	3	4	5	6	7	8	9							10	11	12	13	14	15	16	17	18	19	20	21	22	23	24	25	26	27	28	29	30	31	32	33	34	35
SPACE										1	2	15B52			5-3A																										
										3	4	15B52	15B52																												
										5	6		15B52	SPACE																											
										7	8																														
										9	10																														
										11	12																														
										13	14																														
										15	16																														
										17	18																														
										19	20																														
										21	22																														
										23	24																														
										25	26																														
										27	28																														
										29	30																														
										31	32																														
										33	34																														
										35	36																														
										37	38																														
										39	40																														
										41	42																														
* LARGEST MOTOR LOAD (LML)											15.85	15.85	15.85	47.88	KVA																										
CONNECTED LOAD											11.89	LML																													
											59.55	TOTAL KVA																													



SK-01

ADD E10

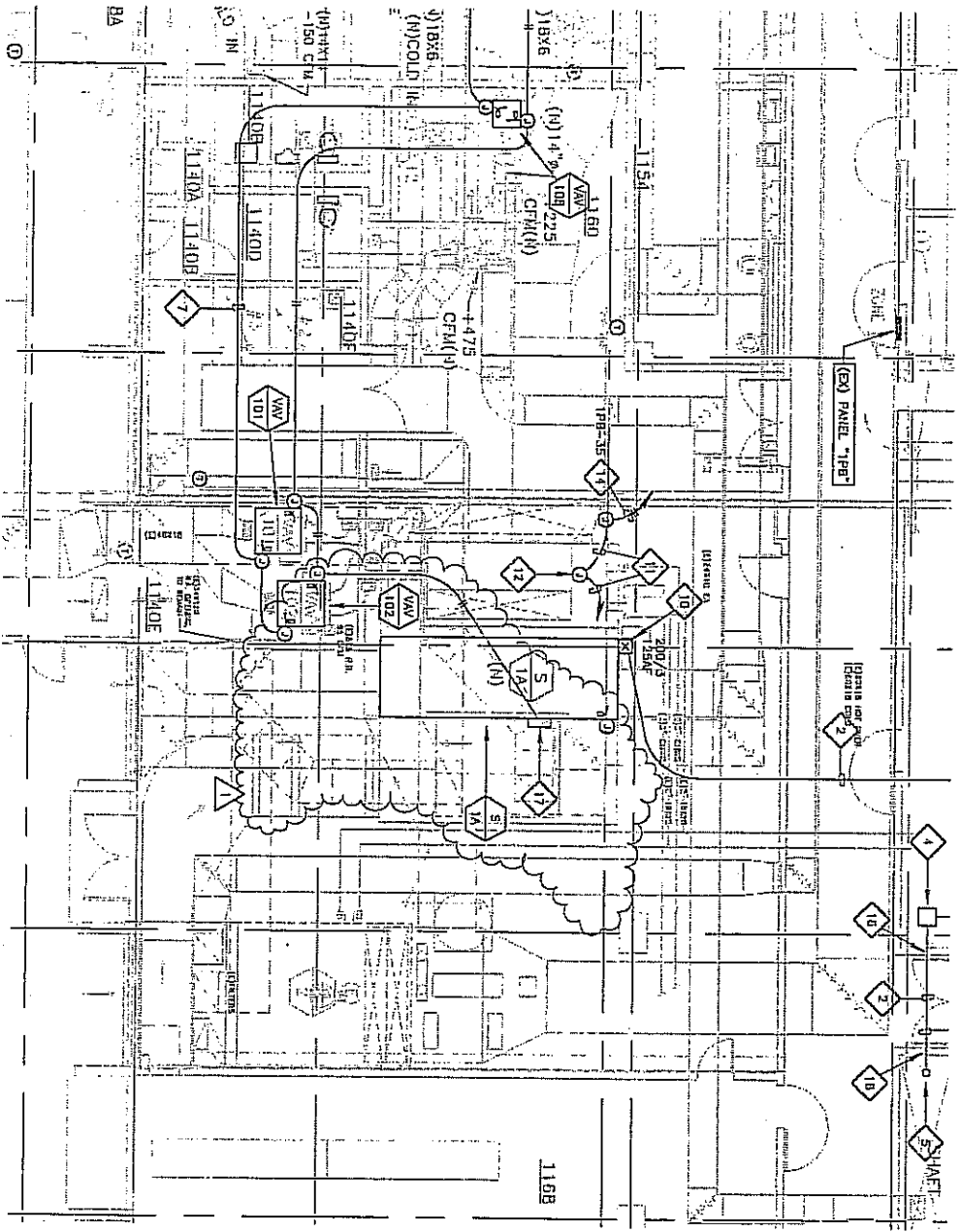
10-2-07

AS BUILT  
 HAROLD FRANK MALL  
 HVAC UPGRADE FLOORS 1 THROUGH 5  
 PROJECT #F4070432/211-11-05 DRAWING NO. 5558-203  
 SHEET TITLE  
 PANEL SCHEDULE 6A



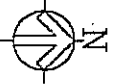
**THE PALIT COMPANY**  
 MECHANICAL ENGINEERING  
 AND CONSULTING

2101 KENNEDY DR.,  
 SUITE 100, SAN JOSE,  
 CA 95128  
 TEL: 408-261-1111  
 FAX: 408-261-1112



PARTIAL FIRST FLOOR POWER AND SIGNAL PLAN

1/8" = 1'-0"



- ELECTRICAL KEY NOTES**  
(NOTE: ALL NOTES MAY NOT APPEAR ON THIS SHEET)
- 17 PREPARE 120V CONNECTION TO DR-8170 CONTROLLER, SEE ORDER OF CONTRACT, SYSTEM THROUGH. LOCATION WITH CONTROL SYSTEM THROUGH.
  - 18 CONNECT 120V POWER TO (N) SMOKE/FIRE DAMPER, ROUTE POWER THROUGH CONTACT IN SMOKE DETECTION TO CLOSE DAMPER ON SMOKE ALARM.

SK-02

**Smith Engineering Associates**  
Professional Engineers  
1000 North 17th Street  
Suite 1000  
Tampa, FL 33602  
Phone: 813-288-7070  
Fax: 813-288-7071

**ADD E21**

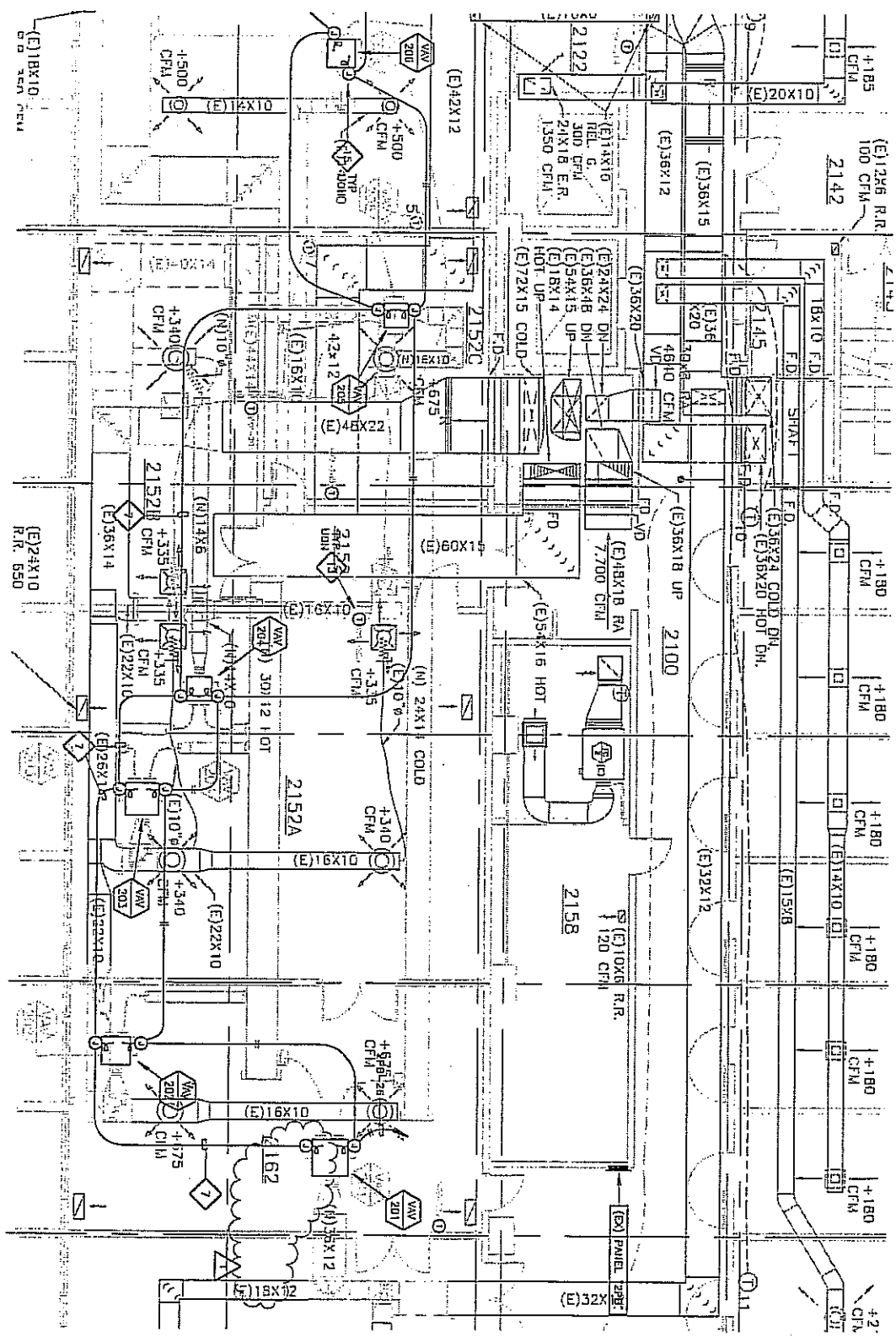
DATE: 10-02-01  
DRAWING NO: 000710

PROJECT: HAROLD FRANK HALL  
HVAC UPGRADE FLOORS 1 THROUGH 5  
PROJECT #FN070432L/211-00 DRAWING NO.056-203  
SHEET TITLE: PARTIAL FIRST FLOOR POWER AND SIGNAL PLAN



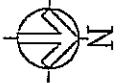
**THE PALT COMPANY**  
MECHANICAL ENGINEERING AND CONSULTING  
3012 GARDNER BLVD.  
SUITE 100  
TAMPA, FL 33610  
PHONE: 813-288-1111  
FAX: 813-288-1112





PARTIAL SECOND FLOOR POWER AND SIGNAL PLAN

1/8" = 1'-0"



57-03

SMITH  
Engineering  
Associates  
INC.

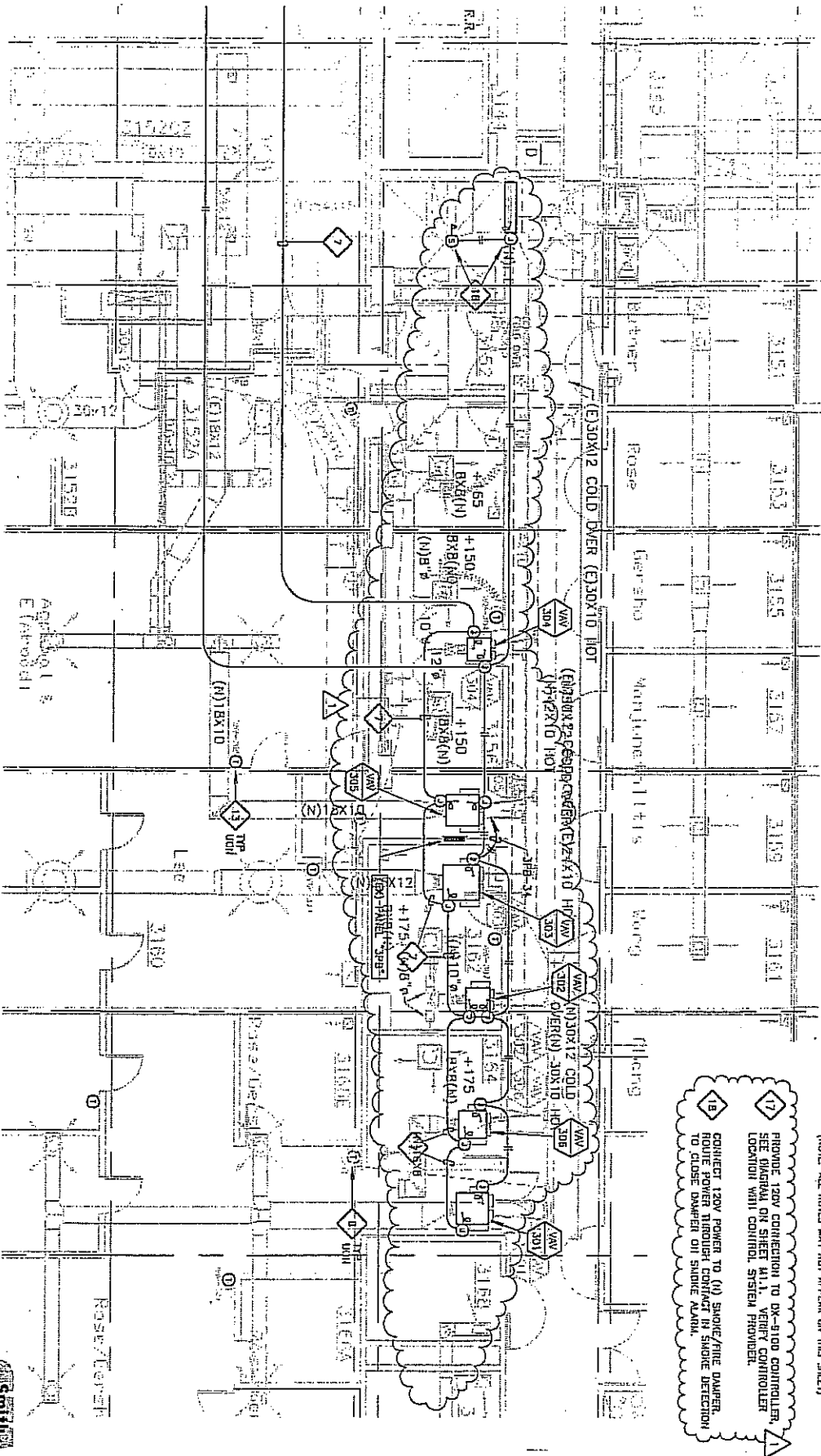
ADD  
E22

DATE: 10-02-07  
DRAWN: D00718

PROJECT: HAROLD FRANK HALL HVAC UPGRADE FLOORS 1 THROUGH 5  
DRAWING NO. 556-203  
SHEET TITLE: PARTIAL SECOND FLOOR POWER AND SIGNAL PLAN

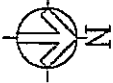


THE PALT COMPANY  
MECHANICAL ENGINEERING  
AND CONSULTING



PARTIAL THIRD FLOOR POWER AND SIGNAL PLAN

1/8" = 1'-0"



**ELECTRICAL KEY NOTES**  
 (NOTE: ALL NOTES MAY NOT APPEAR ON THIS SHEET)

17 PROVIDE 120V CONNECTION TO BX-400 CONTROLLER, SEE DIAGRAM OR SHEET #11 VERIFY CONTROLLER LOCATION WITH CONTROL SYSTEM PROVIDER.

18 CONNECT 120V POWER TO (H) SMOKE/FIRE DAMPER, ROUTE POWER THROUGH CONTACT IN SMOKE DETECTOR TO CLOSE DAMPER ON SMOKE ALARM.

SK-04

**SMITH ENGINEERING ASSOCIATES**  
 10000 15th Street, Suite 100  
 Denver, CO 80202  
 (303) 752-1111  
 www.smitheng.com

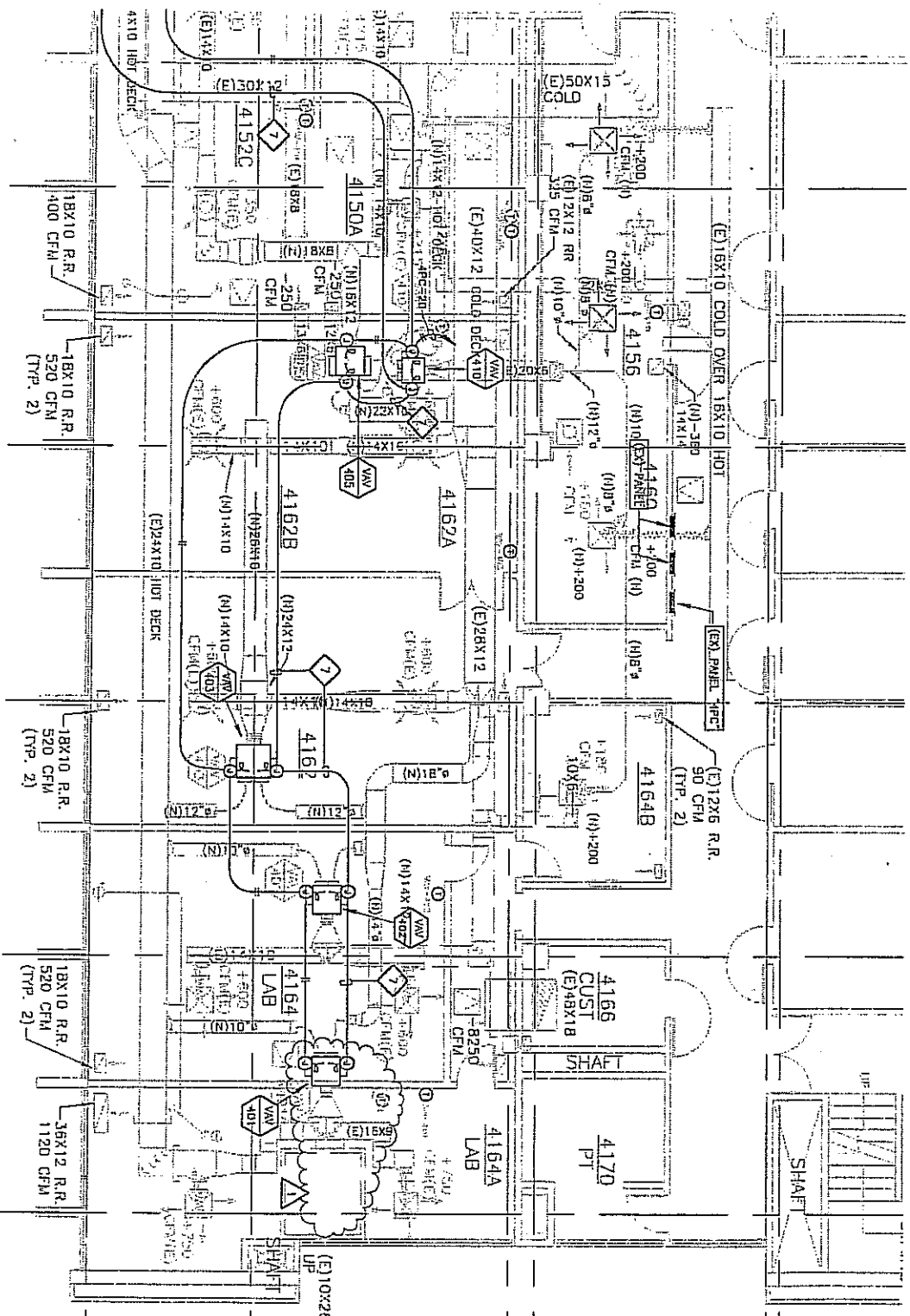
**ADD E2.3**

**10-2-07**

10-2-07  
 PROJECT: HAROLD FRANK HALL HVAC UPGRADE FLOORS 1 THROUGH 5  
 PROJECT #F40784322/211-05 DRAWING NO. 555-203  
 SHEET TITLE: PARTIAL THIRD FLOOR POWER AND SIGNAL PLAN

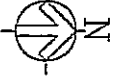
**THE PALT COMPANY**  
 MECHANICAL ENGINEERING AND CONSULTING

**THE PALT COMPANY**  
 MECHANICAL ENGINEERING AND CONSULTING  
 3126 Denver St.  
 Denver, CO 80202  
 (303) 733-1111  
 www.palt.com



PARTIAL FOURTH FLOOR POWER AND SIGNAL PLAN

1/8" = 1'-0"



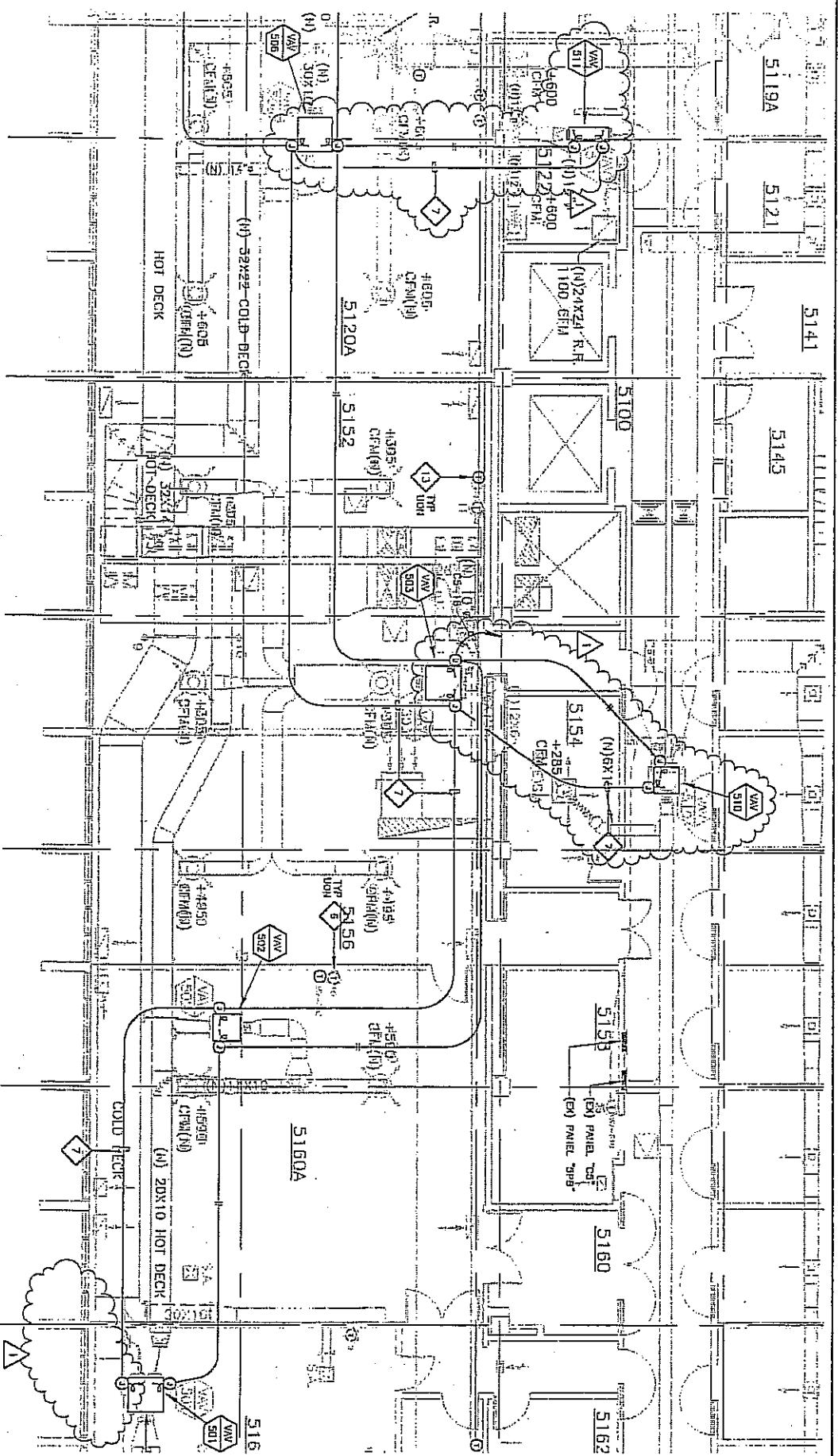
Smith  
Engineering  
Associates  
1100 14th Street, Suite 100  
Oakland, CA 94612  
Tel: 415-778-1000  
Fax: 415-778-1001  
www.smitheng.com

DATE: 11/02-07  
DRAWING NO: 00018  
PROJECT: HAROLD FRANK HALL  
HVAC UPGRADE FLOORS 1 THROUGH 5  
PROJECT #MGT0432L/211-09 DRAWING NO.236-203  
PARTIAL FOURTH FLOOR POWER AND SIGNAL PLAN

REVISIONS  
NO. DATE DESCRIPTION  
1 11-02-07

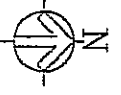
THE PALT COMPANY  
MECHANICAL ENGINEERING  
AND CONSULTING  
3132 SERRA LOMA BLVD., SUITE 100, SAN JOSE, CA 95128  
TEL: 408-251-8878 FAX: 408-251-8879

SK-05



PARTIAL FIFTH FLOOR POWER AND SIGNAL PLAN

1/8" = 1'-0"



**SMITH**  
**Engineering Associates**  
 1000 ...  
 ...  
 ...

SK-06

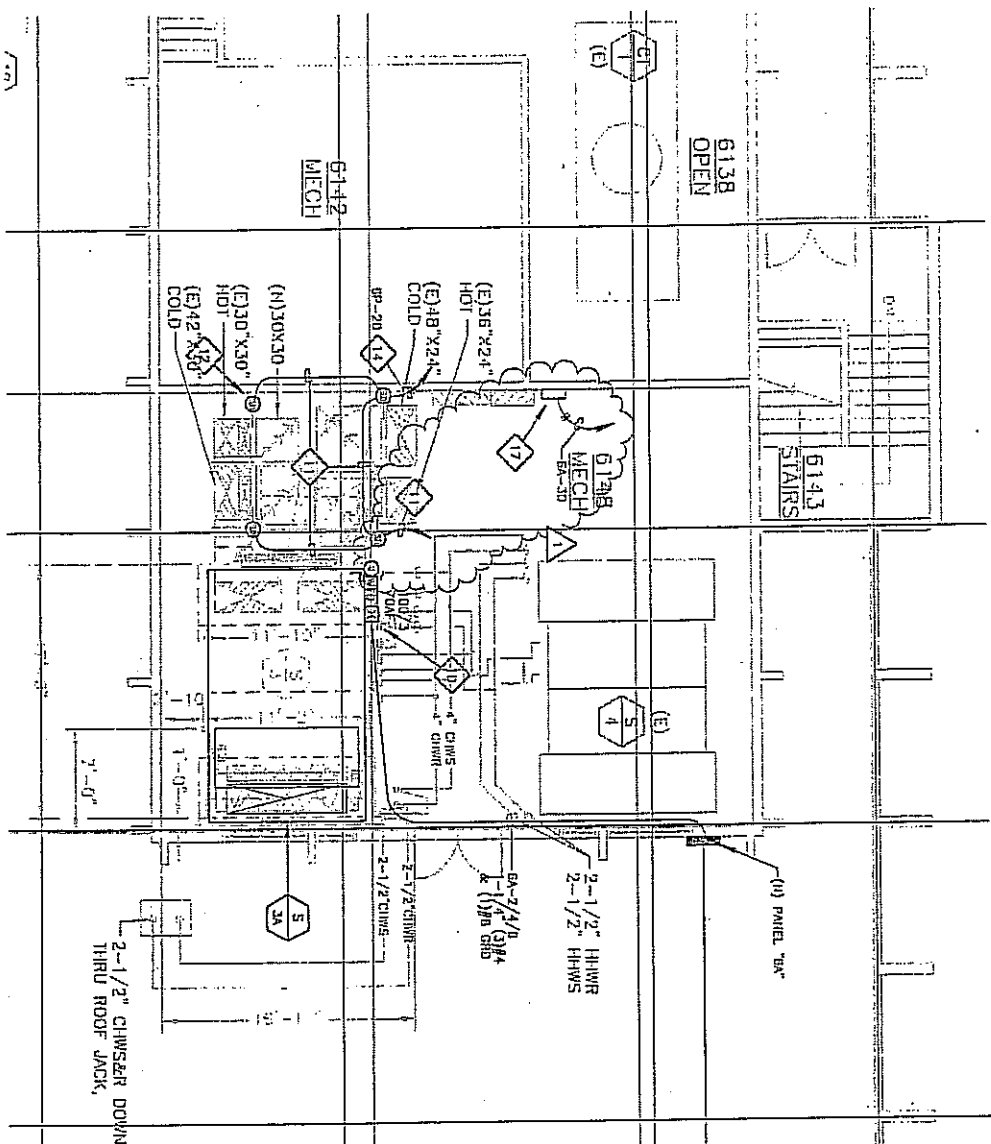
**ADD E25**

REVISIONS  
 1-10-2-07

FOR FILE  
 HAROLD FRANK HALL  
 HVAC UPGRADE FLOORS 1 THROUGH 5  
 PROJECT #14070432/211-55 DRAWING NO.556-203  
 DATE: 10-01-07  
 SHEET: 00070

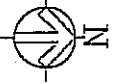


**THE PALT COMPANY**  
 MECHANICAL ENGINEERING  
 AND CONSULTING  
 3110 STREET, 2ND FLOOR  
 NEW YORK, N.Y. 10017  
 TEL: 212-752-1370  
 FAX: 212-752-1370



PARTIAL PENTHOUSE POWER AND SIGNAL PLAN

1/8" = 1'-0"



**ELECTRICAL KEY NOTES**  
 (NOTE: ALL NOTES MAY NOT APPEAR ON THIS SHEET)

16. CONNECT 120V POWER TO (N) SERVICE/TIME DAMPER, ROUTE POWER THROUGH CONTROL IN SERVICE DEFECTION TO EXIST. DAMPER ON SERVICE PLUMB.

17. PROVIDE 120V CONNECTION TO DR-8100 CONTROLLER. SEE DIAGRAM ON SHEET M-1, VENT CONTROL. LOCATION WITH CONTROL SYSTEM PROVIDER.

18. VERIFY HEIGHT OF ROOSTER AND PROVIDE COULDI SUPPORTS, AS REQUIRED.

**Sam W. Engineering Associates**  
 1000 W. 10th St.  
 Suite 100  
 Minneapolis, MN 55408  
 Phone: 612-338-1111  
 Fax: 612-338-1112  
 Email: info@samw.com

SK-07

<p>PROJECT: ADD E26</p> <p>DATE: 10-02-07</p> <p>APPNO: 000712</p>	<p>1/10-2-07</p> <p>JOB TITLE: HAROLD FRANK HALL HVAC UPGRADE FLOORS 1 THROUGH 5 PROJECT #112/112/112/112/112</p> <p>DRAWING NO: 11-02-07</p> <p>SHEET TITLE: PARTIAL PENTHOUSE POWER AND SIGNAL PLAN</p>		<p><b>THE PALT COMPANY</b>      MECHANICAL ENGINEERING AND CONSULTING</p> <p>3181 BIRCH RD. ST. PAUL, MN 55112      PHONE: 612-771-1111      FAX: 612-771-1112      WWW.PALTCOMPANY.COM</p>
--	---	--	---