

UNIVERSITY OF CALIFORNIA, SANTA BARBARA

BERKELEY • DAVIS • IRVINE • LOS ANGELES • MERCED • RIVERSIDE • SAN DIEGO • SAN FRANCISCO



SANTA BARBARA • SANTA CRUZ

OFFICE OF DESIGN & CONSTRUCTION SERVICES and PHYSICAL FACILITIES

CONTRACTING SERVICES
Building 439
Santa Barbara, California 93106-1030
Telephone (805) 893-3356
Fax (805) 893-8592

SENT VIA: FAX ON THIS DATE
 HAND DELIVERY ON THIS DATE
 FEDERAL EXPRESS ON THIS DATE
 UNITED PARCEL SERVICE ON THIS DATE

HOLDERS OF PLANS AND SPECIFICATIONS:

Santa Ynez Apartments 100's Refurbishment
Project No. FM130268L/986475
Addendum No. 2

May 2, 2013

Enclosed is **ADDENDUM NO. 2** to the Construction Documents on the above-captioned project.

Bid date is **Tuesday, May 9, 2013 at 2:30 PM** to be held at:

CONTRACTING SERVICES
Facilities Management, Bldg. 439,
Door #E, Reception Counter
University of California, Santa Barbara
Santa Barbara, CA 93106-1030.

Late arrivals shall be disqualified. Please allow time for unforeseen traffic delays, securing a parking permit and potential parking problems.

A handwritten signature in black ink, appearing to read "Greg Moore".

Greg Moore
Associate Director, Contracting Services

ADDENDUM NO. 2

to the

CONSTRUCTION DOCUMENTS

May 2, 2013

GENERAL

The following changes, additions or deletions shall be made to the following document(s) as Indicated; all other conditions shall remain the same.

I. SPECIFICATIONS

Item No.

- 1.1 **REPLACE** DIVISION 1, GENERAL REQUIREMENTS, SECTION 01010 SUMMARY OF WORK , 1.01- A, in its entirety with: "Interior non structural refurbishment consisting of demolition, mold remediation, existing finished floor patching and new: painting, millwork cabinets, sinks, countertops, ceramic tile, bath tubs, bathroom accessories, kitchen appliances, ADA accessible upgrades, electrical, mechanical and plumbing in 47 apartment units in the 100 series apartments Buildings 805, 806, 807, 809, 810 & 811"

Item No.

- 1.2 **ADD** DIVISION 10 SPECIALTIES, GENERAL REQUIREMENTS, SECTION 10820 MANUFACTURED SHOWER PANS, PART 2 PRODUCTS, Paragraph 2.05: "2.05 A. Locations #109, 118, 119, 142, 141 & 120."

Item No.

- 1.3 **ADD** SECTION 16100 ELECTRICAL Paragraph 1.19: "1.19 EXTRA STOCK A. At project closeout provide 10% extra stock of ballast and lamps for each type fixture. Provide 3 complete fixtures of each type installed."

II. DRAWINGS

Item No.

- 2.1 **REPLACE** SHEET A-1 APARTMENT TYPE A FLOOR PLAN, KEYNOTE 25, in its entirety to read: "25. Provide 5 towel bars and in wall blocking at all Second level apartment units and 4 towel bars and in wall blocking at all first floor apartments." The exact location will be directed by the University Representative."

Item No.

- 2.2 **REPLACE** Backsplash height, 4” note in SHEET A-5 APARTMENT TYPE A KITCHEN CABINET & COUNTERTOP PLANS ELEVATIONS & SECTIONS, Details E and F with the following language: “height as indicated in specifications.”

Item No.

- 2.3 **REPLACE** FIXTURE SCHEDULE, SHEET E-1 ELECTRICAL FLOOR PLANS AND SCHEDULE, in its entirety, with Attachment A, (attached, 1 page).

Item No.

- 2.4 **REPLACE** UNIT TYPE A ELECTRICAL FLOOR PLAN, SHEET E-1 ELECTRICAL FLOOR PLANS AND SCHEDULE, in its entirety, with Attachment B (attached, 1 page).

Item No.

- 2.5 **ADD** ELECTRICAL NOTE 14 on SHEET E-1 ELECTRICAL FLOOR PLANS AND SCHEDULE, “14. Remove 3 way switch. Provide single pole switch. Connect to local light. Cutting and patching of wall and ceiling as is required for finished appearance.”

END OF ADDENDUM NO.2

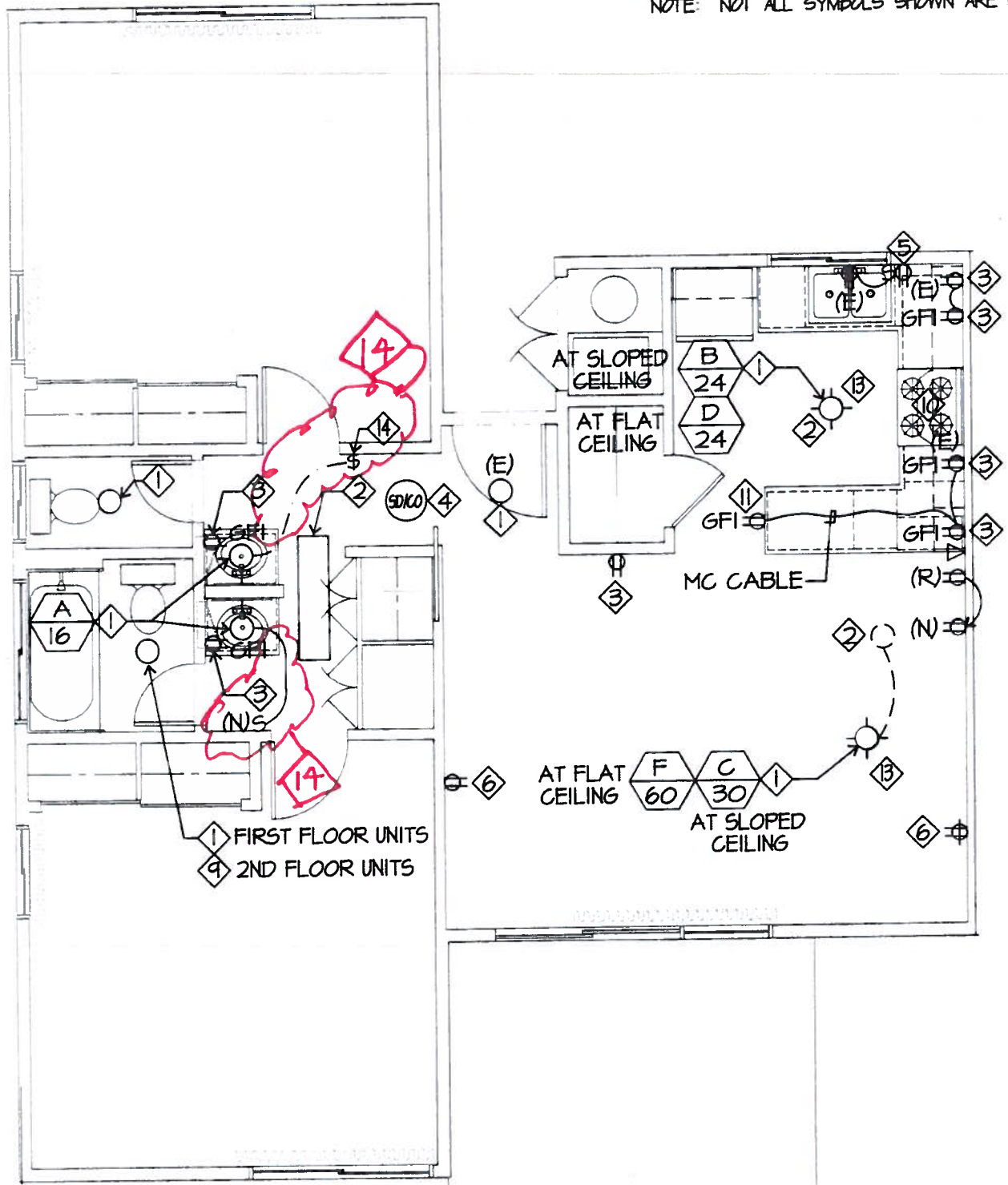
F I X T U R E S C H E D U L E

TYPE	MANUFACTURER & CATALOG NO.	LAMP			BALLAST	LENS	REMARKS
		MFR	TYPE	WATTS			
A 16	SISTEMA LUX * 7452-01	SYLVANIA	FLATSHO 3500K	14	ELECTRONIC	NONE	VANITY LIGHT
B 110	OCL * HI2-CINA-40-WVPTD-5WP-2LFS4-120-15-PEND		FS4TSHO 3500K	2/54	ELECTRONIC	WHITE	KITCHEN PENDANT
C 30	LOUIS POLISEN * PH4/3-P-AH-120V-WHT-WHT		A19/CF 3500K	30	ELECTRONIC	MATTE WHITE	DINING CORD HANG
D 110	OCL * HI2-CINA-40-WVPTD-5WP-2LFS4-120-15		FS4TSHO 3500K	2/54	ELECTRONIC	WHITE	KITCHEN SURFACE
F 30	LOUIS POLISEN * PH4/3-P-AH-120V-WHT-WHT		A19/CF 3500K	30	ELECTRONIC	MATTE WHITE	DINING SHORT CORD HANG

* ALL LIGHT FIXTURES SHALL BE AS SPECIFIED ABOVE OR EQUAL.

FM 1302868L/986475 Santa Ynez 100's Refurbishment
 Addendum No.2 / Attachment "A" sheet E-1 Electrical schedule. Date 4-1-2013

NOTE: NOT ALL SYMBOLS SHOWN ARE USED ON THIS



UNIT TYPE A ELECTRICAL PLAN

SCALE: 1/4" = 1'-0"

FM 1302868L/986475 Santa Ynez 100's Refurbishment
Addendum No.2 / Attachment " B " sheet E-1 Electrical Floor Plan. Date 4-1-2013