

UNIVERSITY OF CALIFORNIA, SANTA BARBARA

BERKELEY • DAVIS • IRVINE • LOS ANGELES • MERCED • RIVERSIDE • SAN DIEGO • SAN FRANCISCO



SANTA BARBARA • SANTA CRUZ

OFFICE OF DESIGN & CONSTRUCTION SERVICES and PHYSICAL FACILITIES

CONTRACTING SERVICES  
Building 439  
Santa Barbara, California 93106-1030  
Telephone (805) 893-3356  
Fax (805) 893-8592

**SENT VIA:**  FAX ON THIS DATE  
 E-MAIL  
 POSTED ON UCSB PLANROOM AND WEBSITE

HOLDERS OF PLANS AND SPECIFICATIONS:

Engineering II 3229 Lab Remodel, Bldg. 503  
FM140301S/987834  
**Addendum No. 1**

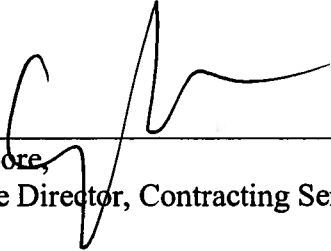
March 5, 2014

Enclosed is **ADDENDUM NO. 1** to the Construction Documents on the above-captioned project.

**The Bid date is hereby changed from Friday, March 7, 2014 at 2:30PM, to Tuesday, March 11, 2014 at 2:30PM to be held at:**

CONTRACTING SERVICES  
Facilities Management, Bldg. 439,  
Door #E, Reception Counter  
University of California, Santa Barbara  
Santa Barbara, CA 93106-1030.

Late arrivals shall be disqualified. Please allow time for unforeseen traffic delays, securing a parking permit and potential parking problems.

  
\_\_\_\_\_  
Greg Moore,  
Associate Director, Contracting Services

ADDENDUM NO. 1

to the

CONSTRUCTION DOCUMENTS

March 5, 2014

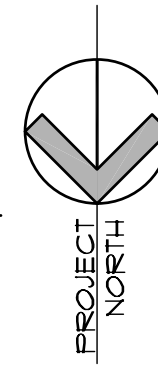
**GENERAL**

The following changes, additions or deletions shall be made to the following document(s) as indicated; all other conditions shall remain the same.

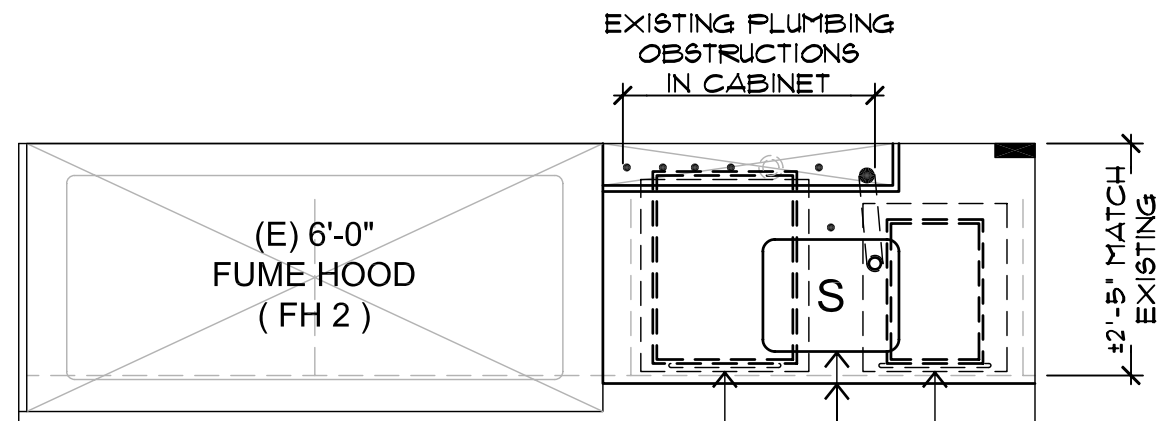
- I. ADVERTISEMENT FOR BIDS**
- Item No. 1-1. **REPLACE Text:** Page 2, sentence beginning with "Bid Deadline:" in its entirety, with the following language:
- "Bid Deadline: Sealed bids must be received on or before **2:30PM** on **March 11, 2014**"
- II. SUPPLEMENTARY INSTRUCTIONS TO BIDDERS**
- Item No. 2-1. **REPLACE Text:** Item 4, in its entirety, with the following language:
- Bids will be received on or before the Bid Deadline: **2:30 PM, March 11, 2014**, and only at:
- Contracting Services  
Facilities Management, Building 439  
Door E, Reception Counter  
University of California, Santa Barbara  
Santa Barbara, California 93106-1030
- III. DRAWINGS**
- Item No. 3-1. **MODIFY Sheet A2.2, Proposed Floor Plan, at cabinet west of Fume Hood 2, "WOOD BASE CAB'S TO REMAIN."** as follows:
- "See attached 'Partial Plan' Drawing. Cabinet to be replaced with material and finish to match existing with two (2) rolling carboy dollies with Nalgene bins."

END OF ADDENDUM NO. 1

# PARTIAL PLAN



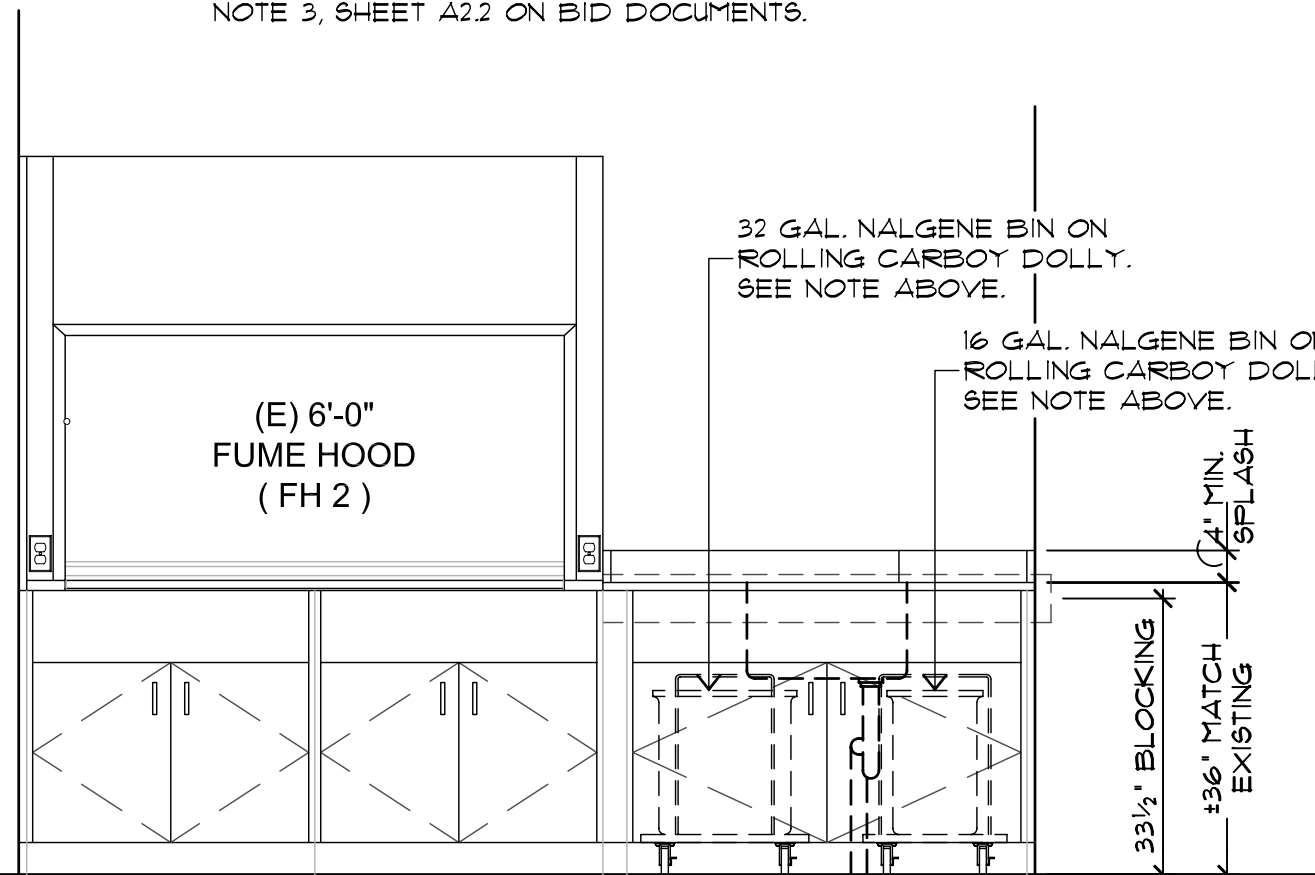
1/2" = 1'-0"



21"x24"x5" HIGH MAX. EPOXY POWDER COATED STEEL ROLLING CARBOY DOLLY w/ + 20" STAINLESS STEEL LOOP HANDLE w/ 32 GAL. NALGENE BIN, THERMO SCIENTIFIC #14100-0045 OR EQUAL. VERIFY HEIGHT OF CARBOY w/ BOTTOM OF SINK PRIOR TO FABRICATION.

18"x21"x5" HIGH MAX. EPOXY POWDER COATED STEEL ROLLING CARBOY DOLLY w/ + 20" STAINLESS STEEL LOOP HANDLE w/ 16 GAL. NALGENE BIN, THERMO SCIENTIFIC #14100-0040 OR EQUAL. VERIFY HEIGHT OF CARBOY w/ BOTTOM OF SINK PRIOR TO FABRICATION.

NEW FAUCET, SINK & COUNTER TOP PER NOTE 3, SHEET A2.2 ON BID DOCUMENTS.



(2) EXISTING  
 BASE CABINETS

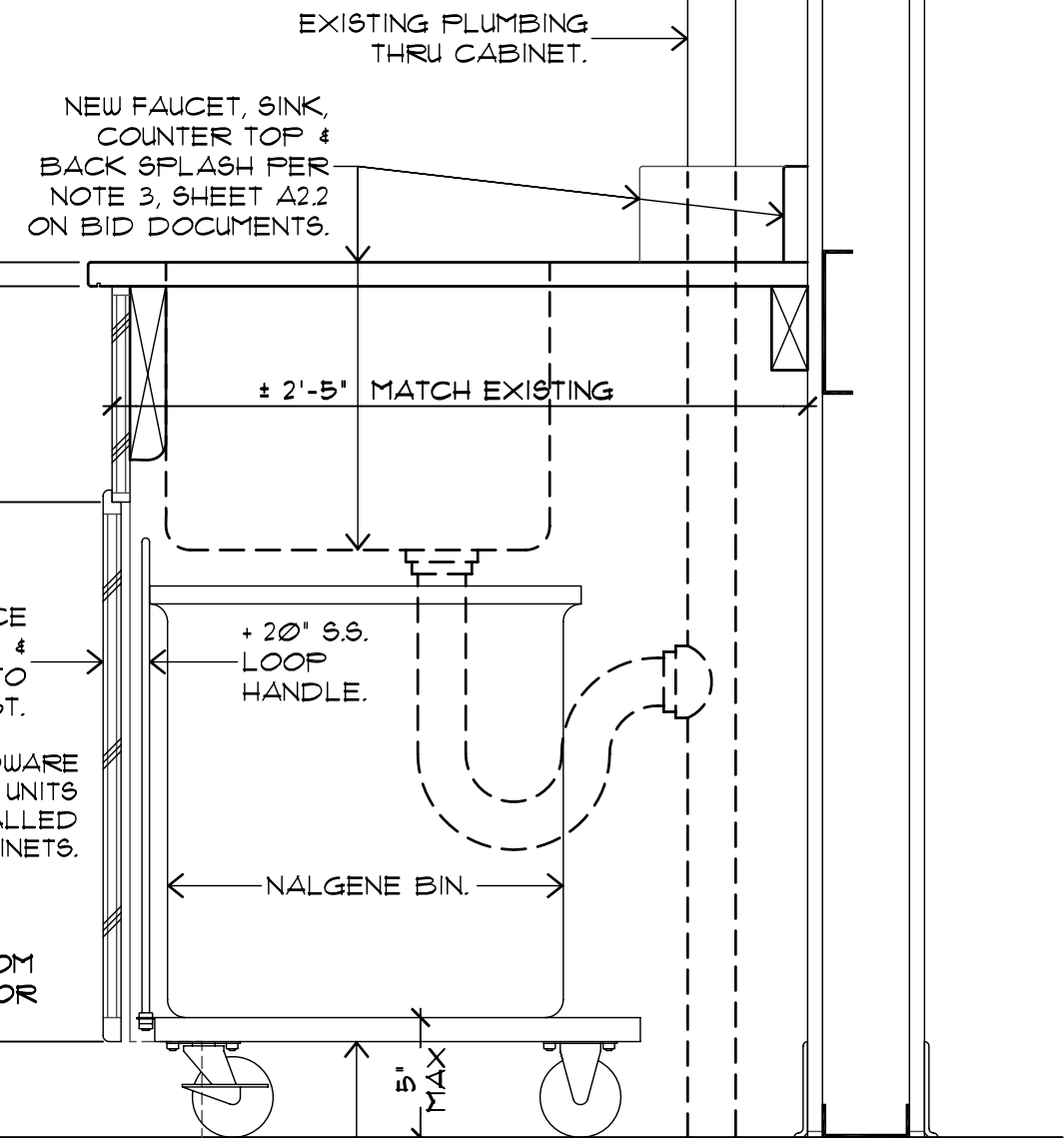
50" WOOD CABINET  
 TO MATCH  
 EXISTING WITHOUT  
 BASE OR KICK

FILLER PANEL  
 TO MATCH  
 EXISTING

SHIM  
 SPACE

# SOUTH ELEVATION

1/2" = 1'-0"



EPOXY POWDER COATED STEEL ROLLING CARBOY DOLLY w/ + 20" STAINLESS STEEL LOOP HANDLE w/ NALGENE BIN PER PLAN. VERIFY HEIGHT OF CARBOY w/ BOTTOM OF SINK PRIOR TO FABRICATION.

# CABINET SECTION

1-1/2" = 1'-0"