

UNIVERSITY OF CALIFORNIA, SANTA BARBARA

BERKELEY • DAVIS • IRVINE • LOS ANGELES • MERCED • RIVERSIDE • SAN DIEGO • SAN FRANCISCO



SANTA BARBARA • SANTA CRUZ

OFFICE OF DESIGN & CONSTRUCTION SERVICES and PHYSICAL FACILITIES

CONTRACTING SERVICES
Building 439
Santa Barbara, California 93106-1030
Telephone (805) 893-3356
Fax (805) 893-8592

- SENT VIA:** FAX ON THIS DATE
 HAND DELIVERY ON THIS DATE
 FEDERAL EXPRESS ON THIS DATE
 UNITED PARCEL SERVICE ON THIS DATE

HOLDERS OF PLANS AND SPECIFICATIONS:

Sedgwick Reserve Electrical Utility Relocation
Project No. FM130513S/986150
Addendum No. 3

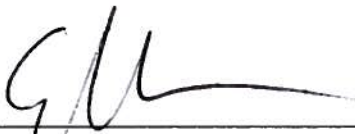
October 24, 2013

Enclosed is **ADDENDUM NO. 3** to the Construction Documents on the above-captioned project.

Bid date is Thursday, October 31, 2013 at 2:30 PM to be held at:

CONTRACTING SERVICES
Facilities Management, Bldg. 439,
Door #E, Reception Counter
University of California, Santa Barbara
Santa Barbara, CA 93106-1030.

Late arrivals shall be disqualified. Please allow time for unforeseen traffic delays, securing a parking permit and potential parking problems.



Greg Moore,
Associate Director, Contracting Services

ADDENDUM No. 3

to the

CONSTRUCTION DOCUMENTS

October 24, 2013

GENERAL

The following changes, additions or deletions shall be made to the following document(s) as Indicated; all other conditions shall remain the same.

I. SPECIFICATIONS

Item No.

- 1.1 **REPLACE SECTION 16000, ELECTRICAL, 2.02. CONDUIT, B. INSTALLATION OF CONDUIT, 1. UNDERGROUND CONDUIT, g.** with with: "Properly separate two or more conduits installed underground with factory made conduit spacers. Encase all electrical conduits in a minimum of 6 inches of concrete."

II. DRAWINGS

Item No.

- 2.1 **ADD** to Drawing No. T-1 (TITLE SHEET), GENERAL NOTES, 15: "15. Existing poles indicated to be removed shall be removed in their entirety and given to the University. The five poles along the north/south overhead run as shown on sheet E-2 will be removed by the agency owning the poles. Contractor to coordinate with the relevant agency and the University Representative for removal."

Item No.

2.2

ADD to DRAWING NO. T-1 (TITLE SHEET), GENERAL NOTES: 16; the following note “16. Trenching shall not occur within a tree’s drip line unless approved by the University Representative. Boring shall not occur within 6 feet of a tree trunk.”

Item No.

2.3

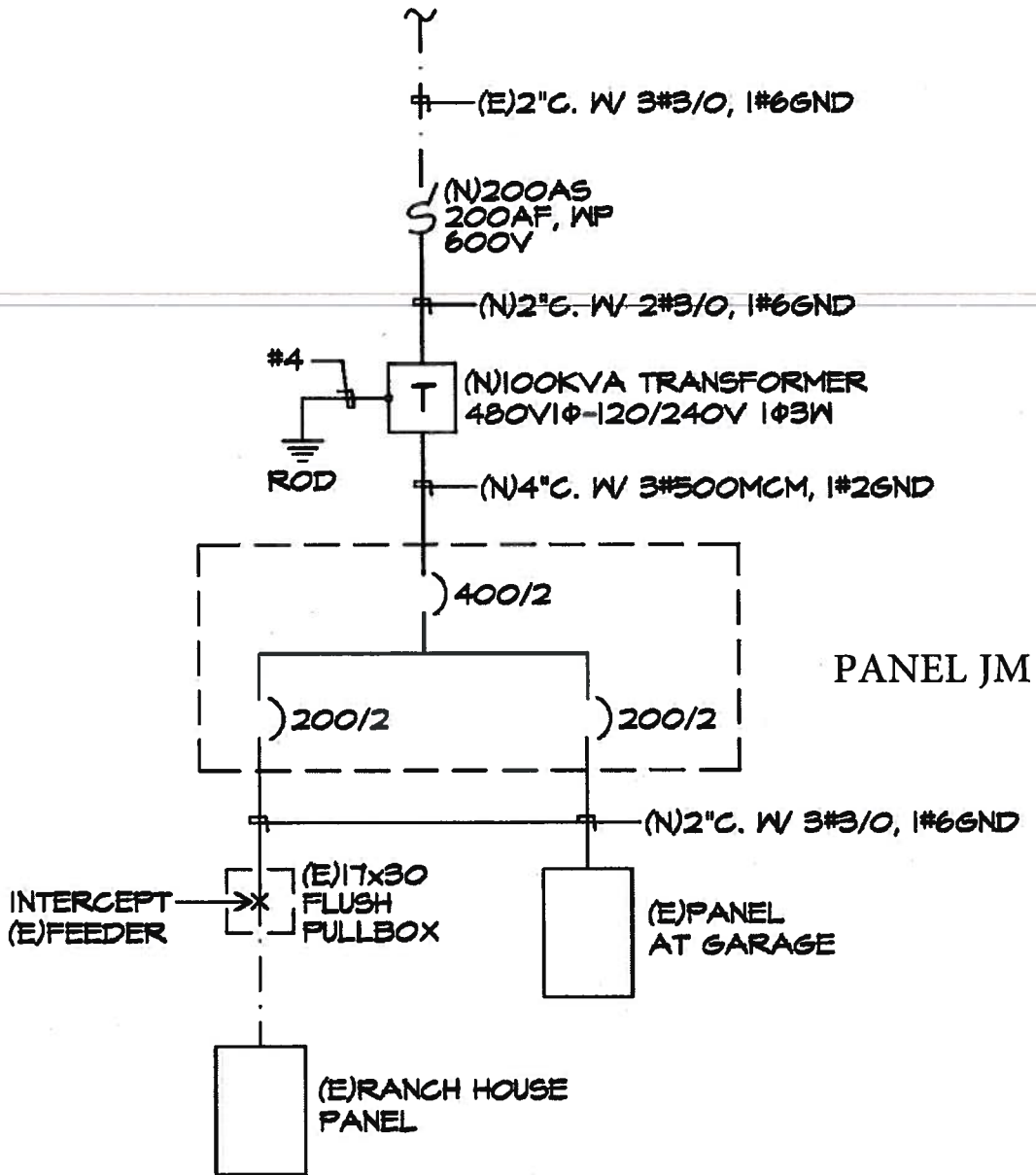
MODIFY DRAWING NO. E-3, (SITE COMMUNICATIONS LINES PLAN): the note on the bottom right of the sheet from “SCH80PC”, to “N(2)2”~~SCH80PC~~ COORDINATE QUADRANT FOR STUB UP.” (Note to read: “N(2)2” C COORDINATE QUADRANT FOR STUB UP.”)

Item No.

2.4

ADD to DRAWING NO. E-4 (ELECTRICAL SITE PLAN): “SKE -1, Single Line Diagram, Panel “JM”, dated 10-23-13”, see attached SKE-1.

END OF ADDENDUM NO. 3



SINGLE LINE DIAGRAM

SCALE: NONE

Addendum #3

FM130513S/986150

<p>SEDGWICK RESERVE ELECTRICAL UTILITY RELOCATION</p>	<p>JMPE ELECTRICAL ENGINEERING LIGHTING DESIGN CALIFORNIA REGISTRATION NO E13083 136 W. ALAMAR AVE. SUITE B SANTA BARBARA CA 93105 (805) 569-9216 FAX (805) 569-2406 email: maloney@jmps.net</p>		<p>DATE: 10-23-13 SCALE: NONE JOB NO: 12210</p>
<p>SINGLE LINE DIAGRAM</p>			<p>SKE-1</p>