

UNIVERSITY OF CALIFORNIA, SANTA BARBARA

BERKELEY • DAVIS • IRVINE • LOS ANGELES • MERCED • RIVERSIDE • SAN DIEGO • SAN FRANCISCO



SANTA BARBARA • SANTA CRUZ

OFFICE OF DESIGN & CONSTRUCTION SERVICES and PHYSICAL FACILITIES

CONTRACTING SERVICES
Building 439
Santa Barbara, California 93106-1030
Telephone (805) 893-3356
Fax (805) 893-8592

SENT VIA: FAX ON THIS DATE
 HAND DELIVERY ON THIS DATE
 FEDERAL EXPRESS ON THIS DATE
 UNITED PARCEL SERVICE ON THIS DATE

HOLDERS OF PLANS AND SPECIFICATIONS:

Air Handler Upgrade Bio Science II Bldg 571
Project No. FM100063S/101-64
Addendum No. ONE

October 5, 2009

Enclosed is **ADDENDUM NO. ONE** to the Construction Documents on the above-captioned project.

Bid date is **Tuesday, October 20, 2009 at 2:30PM** to be held at:

CONTRACTING SERVICES
Facilities Management, Bldg. 439,
Door #E, Reception Counter
University of California, Santa Barbara
Santa Barbara, CA 93106-1030.

Late arrivals shall be disqualified. Please allow time for unforeseen traffic delays, securing a parking permit and potential parking problems.

Anna Galanis
Director, Contracting Services

ADDENDUM NUMBER ONE

to the

Construction Documents

October 5, 2009

GENERAL

The following changes, additions or deletions shall be made to the following document(s) as Indicated; all other conditions shall remain the same.

I. TABLE OF CONTENTS

Item No.

1. Table of Contents, after "Drawings (Under Separate Cover), ADD:
"University Provided Equipment - Cut Sheets"

II. SUPPLEMENTARY INSTRUCTIONS TO BIDDERS

Item No.

1. ADD Number 11 to read as follows:
"11. An additional Non-Mandatory site location visit will be held on 10/7/2009 from 10:00AM to 11:00AM. Meet at the front entrance to the Bio II building at 10:00AM to be escorted to the job site location. Bidders are not allowed to visit the job site unattended. "

III SPECIFICATIONS

Item No.

1. Section 01565, Hazardous Material Procedures, Part 1, General, 1.01,
Hazardous Material Procedures, ADD:
"B Hazardous Materials, including abatement, are not part of this Work."

IV UNIVERSITY PROVIDED EQUIPMENT – CUT SHEETS

Item No.

1.

ADD:

“University Provided Equipment - Cut Sheets, Twin City Fan & Blower, Fan Tag: 445, EPFN – Plenum Fan, Airfoil 9-Blades, Arr. 1 & 4, Dated July 10, 2008, 2 pages, Attached.”

END OF ADDENDUM NO. ONE

FM100063/101-64

See Attached Drawing
 Bro Science
 Bkley 571



Twin City Fan & Blower

A Twin City Fan Company

Fan Tag: **445**
 Job Name: S1,2 and 3
 Job ID: S1-S2-S2
 Date: July 10, 2008

EPFN - Plenum Fan, Airfoil 9-Blades, Arr.1&4



See Attached Drawing

FAN DESCRIPTION

Qty	Type	Size	Wt (lb.)
1	EPFN	445	1514

Approximate weight each, includes fan, motor and accessories.

FAN PERFORMANCE

CFM	SP (in.wg)	RPM	Oper. BHP
34,500	3.87	910	28.30

Temperature: 70°F, Altitude: 0ft

$$\eta = \frac{34,500 \times 3.87}{6356 \times 28.30} = 0.742 \text{ EFF}$$

MOTOR DATA

HP	RPM	Volt/Ph/Hz	Encl
30	900	460/1/60	TEFC

Efficiency:

SOUND DATA

Octave Bands	1	2	3	4	5	6	7	8	LwA	dBA	Sones
Level at Inlet	93	98	92	84	84	79	72	67	90	76	32

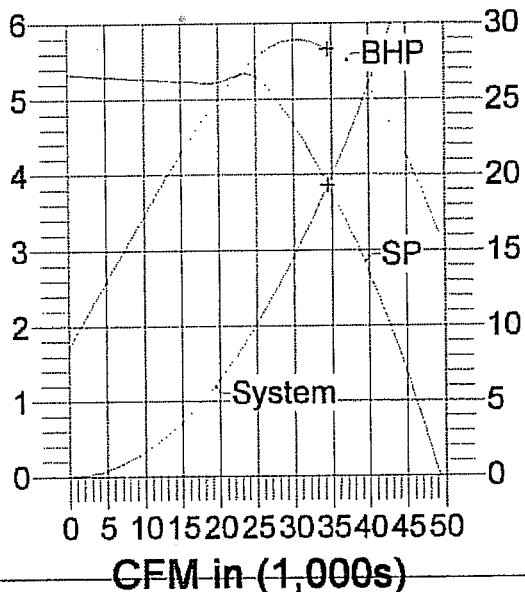
LwA: The overall (single value) fan sound power level in dB re. 10¹² Watts, 'A' weighted.

dBA: Estimated sound pressure level (re:0.0002 microbar) based on a single ducted installation at 5 ft., using a directivity factor of 1.

ACCESSORIES INCLUDED

- Group 3E Epoxy - Entire Fan
- Mount TCF Motor
- 900 RPM Motor

Static Pressure (in.wg)



BHP



Twin City Fan & Blower

A Twin City Fan Company

Fan Tag: 445

Job Name: S1,2 and 3

Job ID: S1-S2-S2

Date: July 10, 2008

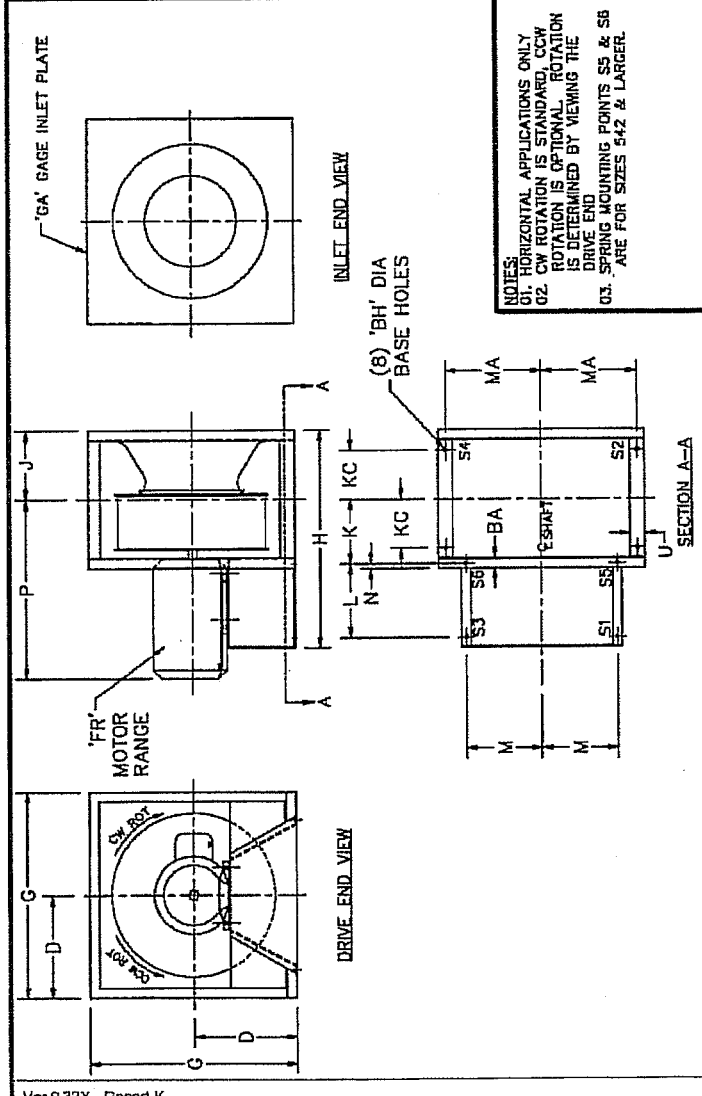
TYPE EFPN & EPON PLENUM ARR 4 CL I & II

TWIN CITY FAN & BLOWER
 1200 W. WASHINGTON ST. MINNEAPOLIS, MN 55404
 DIVISION OF AIR MOVEMENT AND CONTROL ASSOC.
 DWG # AC1001290E
 REVISED 9/30/05
 DRAWN 05/02/05

JOB: _____
 LOC: _____
 ENG./ARCH: _____
 CERT. BY: _____
 S.O. NO.: _____

SIZE	CLASS	ROT.	UNIT NO.
CFM	SP	RPM	BHP
			YS

ACCESSORIES REQD



SIZE	BA	BH	D	FR	G	GA	500-775		700-1050		500-775		700-1050		500-775		700-1050	
							WIDTH	H	WIDTH	H	WIDTH	K	WIDTH	K	WIDTH	MC	WIDTH	MC
122	1.50	0.31	10.00	56 - 184T	20.00	12	23.25	24.25	6.38	6.88	5.75	6.25	3.50	4.00	8.25	8.75	9.13	18.31
150	1.50	0.44	11.00	58 - 184T	22.00	12	25.13	26.25	7.31	7.88	6.09	7.25	4.44	5.00	9.25	9.75	10.13	18.00
165	1.50	0.44	12.00	58 - 184T	24.00	12	26.25	27.50	7.88	8.50	7.25	7.88	4.88	5.50	9.25	9.75	11.13	18.63
182	1.75	0.44	13.00	143T - 215T	26.00	12	30.00	31.50	8.75	9.50	8.00	8.75	4.50	5.25	10.88	11.50	11.50	25.13
200	2.25	0.56	14.50	143T - 215T	29.00	12	31.75	33.38	9.88	10.69	8.88	9.69	6.88	7.50	10.63	11.00	13.00	26.75
222	2.25	0.56	16.00	182T - 256T	32.00	10	37.75	39.63	10.58	11.50	9.50	10.50	7.08	8.00	14.63	11.75	14.50	33.00
245	2.50	0.56	17.00	182T - 256T	34.00	10	39.63	41.63	11.63	12.63	10.50	11.50	7.50	8.50	14.50	12.88	14.50	33.75
270	2.50	0.56	18.00	213T - 286T	36.00	10	42.75	45.00	12.50	13.63	11.38	12.50	8.88	9.00	16.25	14.13	16.50	35.88
300	3.00	0.56	21.00	213T - 286T	42.00	10	45.25	47.75	14.00	15.25	12.63	13.88	7.75	8.00	16.00	15.88	17.50	36.88
330	3.50	0.56	23.00	254T - 326T	48.00	10	49.50	52.25	15.50	16.88	13.88	15.25	9.38	10.75	17.58	17.38	19.50	40.25
395	3.50	0.56	25.00	284T - 405T	51.00	7	56.81	59.81	18.81	19.31	16.88	16.88	10.50	12.00	21.08	18.89	22.00	48.50
402	3.50	0.81	26.00	284T - 405T	56.00	7	58.44	62.69	18.13	19.75	16.50	18.13	11.88	13.50	21.06	20.80	24.50	49.88
445	4.00	0.81	31.00	324T - 405T	62.00	7	62.69	66.31	20.00	21.81	18.84	19.84	14.00	15.81	20.81	22.88	26.50	54.88
480	4.00	0.81	34.00	324T - 405T	68.00	7	65.81	69.81	21.58	23.58	19.69	21.69	15.50	17.56	20.81	23.38	26.50	54.19
542	4.00	0.81	35.00	384T - 445T	76.00	7	72.81	77.31	23.31	25.58	21.44	23.69	17.31	19.58	24.44	27.63	33.50	62.44
600	5.00	0.81	38.00	384T - 445T	82.00	7	78.00	82.88	26.38	28.81	24.00	26.44	19.38	21.81	24.00	30.63	33.50	64.13
660	5.00	0.81	40.75	384T - 445T	81.50	6.25	82.00	87.50	28.38	31.13	25.00	28.75	21.44	24.13	24.00	33.13	36.25	66.63

DWG NO AC1001290E

Ver 9.12X - Revod K

All quotations per Twin City Fan Terms and Conditions found at http://www.twincityfan.com/TC_TCF.pdf