

UNIVERSITY OF CALIFORNIA, SANTA BARBARA

BERKELEY • DAVIS • IRVINE • LOS ANGELES • MERCED • RIVERSIDE • SAN DIEGO • SAN FRANCISCO



SANTA BARBARA • SANTA CRUZ

OFFICE OF DESIGN & CONSTRUCTION SERVICES and PHYSICAL FACILITIES

CONTRACTING SERVICES  
Building 439  
Santa Barbara, California 93106-1030  
Telephone (805) 893-3356  
Fax (805) 893-8592

**SENT VIA:**  FAX ON THIS DATE  
 HAND DELIVERY ON THIS DATE  
 FEDERAL EXPRESS ON THIS DATE  
 UNITED PARCEL SERVICE ON THIS DATE

HOLDERS OF PLANS AND SPECIFICATIONS:

North Campus Faculty Housing Phase II  
Project No. FM110407L/986315  
**Addendum No. 7**

September 28, 2011

Enclosed is **ADDENDUM NO. 7** to the Construction Documents on the above-captioned project.

Bid date is hereby changed from Thursday, September 29, 2011 to **Wednesday, October 5, 2011** at 2:30 PM to be held at:

CONTRACTING SERVICES  
Facilities Management, Bldg. 439  
Door #E, Reception Counter  
University of California, Santa Barbara  
Santa Barbara, CA 93106-1030.

Late arrivals shall be disqualified. Please allow time for unforeseen traffic delays, securing a parking permit and potential parking problems.

  
\_\_\_\_\_  
Greg Moore  
Associate Director, Contracting Services

ADDENDUM NUMBER 7

to the

CONSTRUCTION DOCUMENTS

September 28, 2011

GENERAL

The following changes, additions or deletions shall be made to the following document(s) as indicated; all other conditions shall remain the same.

I. ADVERTISEMENT FOR BIDS

Item No.

1. Second page, sentence beginning with "Bid Deadline...", **CHANGE** to read in it's entirety as follows:  
"Bid Deadline: Sealed bids must be received on or before **2:30 P.M. on Wednesday, October 5, 2011**. Sealed Bids will be received only at: Contracting Services, Facilities Management, Building #439, Door "E", Reception Counter, University of California, Santa Barbara, Santa Barbara, California 93106-1030."

II. SUPPLEMENTARY INSTRUCTIONS TO BIDDERS

Item No.

1. Number 4, **CHANGE** to read in it's entirety as follows:  
"Bids will be received on or before the Bid Deadline: **2:30 P.M., Wednesday, October 5, 2011** and only at: Contracting Services, Facilities Management, Building #439, Door "E", Reception Counter, University of California, Santa Barbara, Santa Barbara, California 93106-1030."

III. DRAWING

Item No.

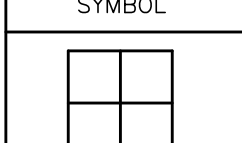
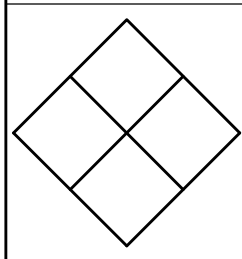
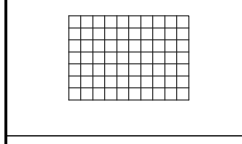
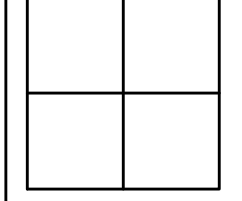
1. **DELETE** Sheet A10.20 Recreational Building Floor Material Layout Plan, dated 8/1/11. **REPLACE** with attached Sheet A10.20 Recreational Building Floor Material Layout Plan, dated 9/9/11. (Attached drawing was erroneously omitted from Addendum 3.) View full size drawing at:  
<http://facilities.ucsb.edu/contracts/bid/view.asp?id+263>

END OF ADDENDUM NO. 7

**NORTH CAMPUS FACULTY HOUSING - PHASE II**  
 FACULTY HOUSING  
 SANTA BARBARA  
 UNIVERSITY OF CALIFORNIA, SANTA BARBARA  
 SANTA BARBARA, CALIFORNIA

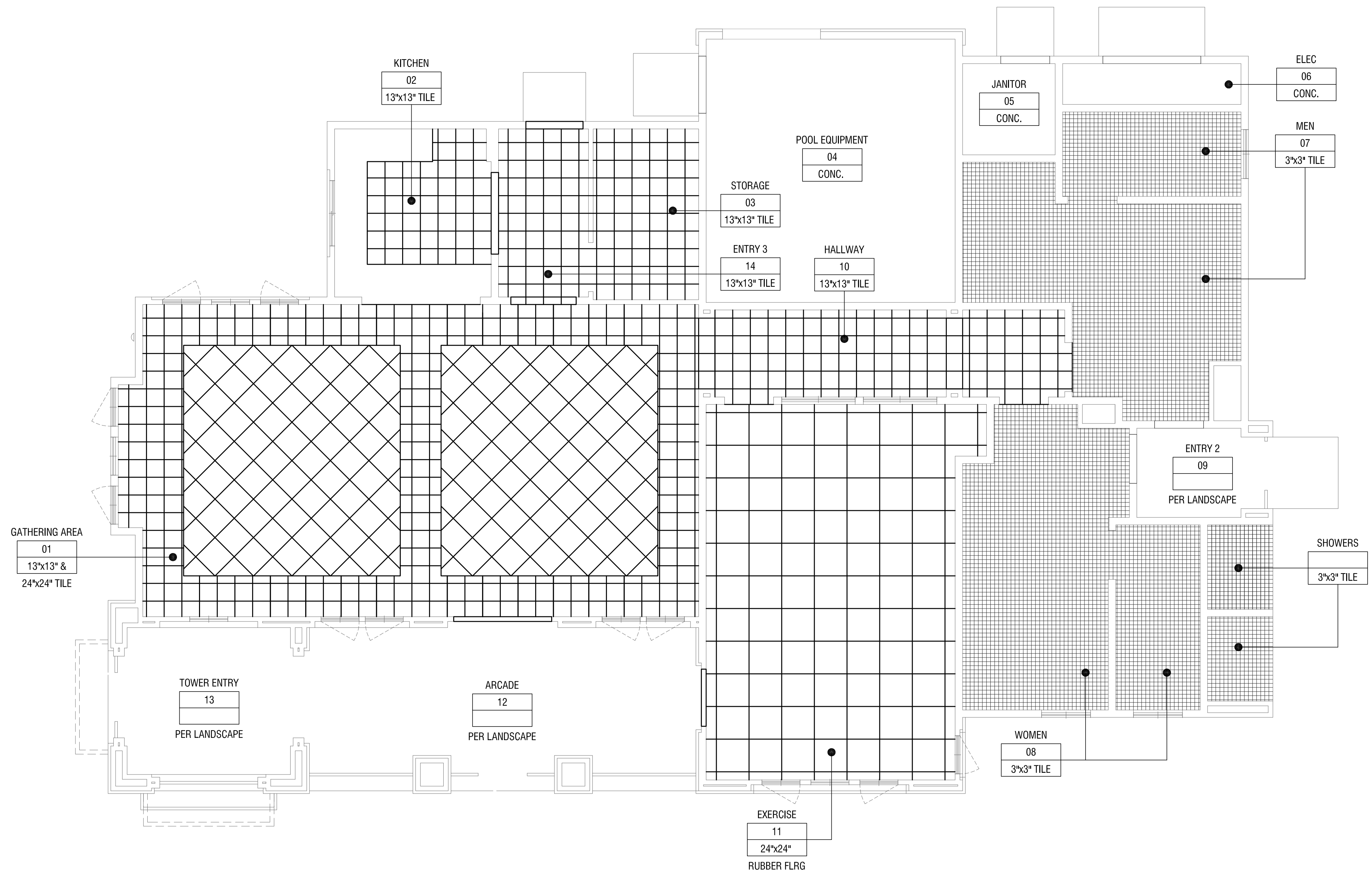
© 2011 WILLIAM HEZMALHALCH ARCHITECTS, INC. EXPRESSLY RESERVES ITS COMMON LAW COPYRIGHT AND OTHER PROPERTY RIGHTS IN THESE PLANS. THESE PLANS ARE NOT TO BE REPRODUCED, CHANGED, OR COPIED IN ANY FORM OR MANNER WHATSOEVER, NOR ARE THEY TO BE ASSIGNED TO A THIRD PARTY WITHOUT FIRST OBTAINING THE WRITTEN PERMISSION AND CONSENT OF WILLIAM HEZMALHALCH ARCHITECTS, INC. IN THE EVENT OF UNAUTHORIZED REUSE OF THESE PLANS BY A THIRD PARTY, THE THIRD PARTY SHALL HOLD WILLIAM HEZMALHALCH ARCHITECTS, INC. HARMLESS.

**FLOOR MATERIAL LEGEND**

SYMBOL	DESCRIPTION
	13"x13" TILE - REFER TO SPECIFICATION FOR ADDITIONAL INFORMATION
	20"x20" TILE - REFER TO SPECIFICATION FOR ADDITIONAL INFORMATION
	3"x3" TILE - REFER TO SPECIFICATION FOR ADDITIONAL INFORMATION
	24"x24" ATHLETIC RUBBER FLOORING - REFER TO SPECIFICATION FOR ADDITIONAL INFORMATION

**FLOOR MATERIAL PLAN NOTES**

- A. THE ARCHITECT SHALL BE NOTIFIED OF ANY DISCREPANCIES WITH ANY CODE, SUPPLEMENTARY DRAWINGS OR REPORTS.
- B. REFER TO SPECIFICATION FOR FLOOR MATERIAL INFORMATION
- C. USE PREDOMINANT TILE FOR THRESHOLD LOCATIONS - TILE-TO-TILE



DO NOT SCALE PLANS

**REVISIONS**

NO.	DATE	DESCRIPTION

**RECREATIONAL BUILDING: FLOOR MATERIAL LAYOUT PLAN**

SHEET SCALE:	1/4" = 1'-0"
PROJECT MANAGER:	BSM
DESIGNER:	MC
DRAWN BY:	RHA
REVIEWED BY:	
1ST BLDG. DEPT. SUBMITTAL:	
ISSUED FOR CONSTRUCTION:	
JOB NUMBER:	2008145.15
CAD FILE NAME:	08145_PHASE II_A10-20
DATE:	9/9/11
SHEET:	A10.20

UCSB PROJECT #:	FM110407L/086315
UCSB DRAWING #:	60-305