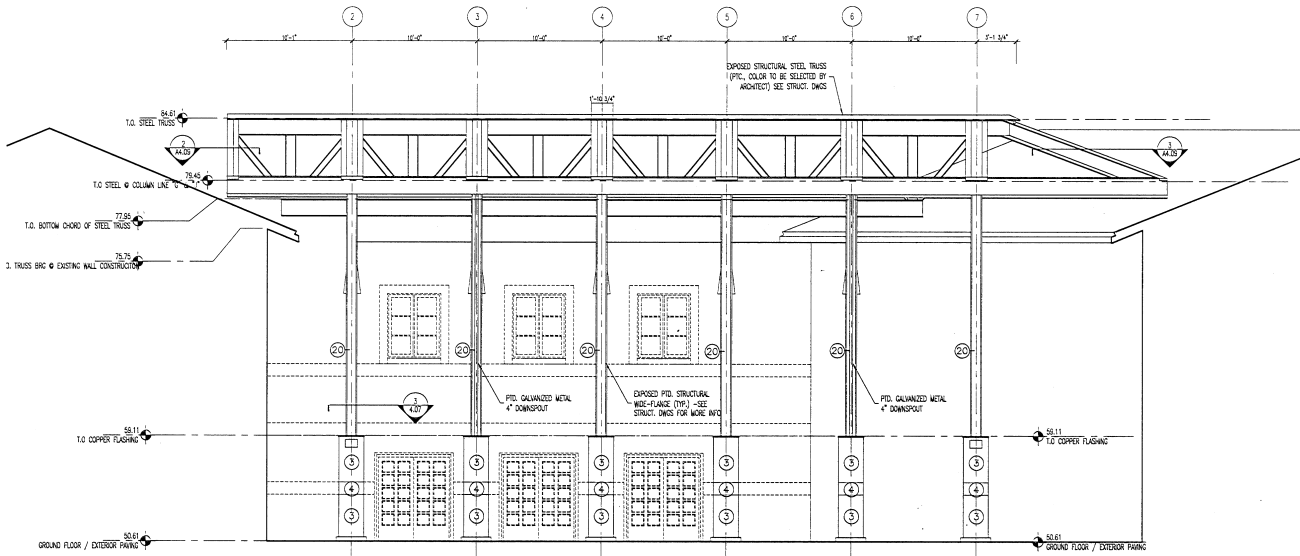


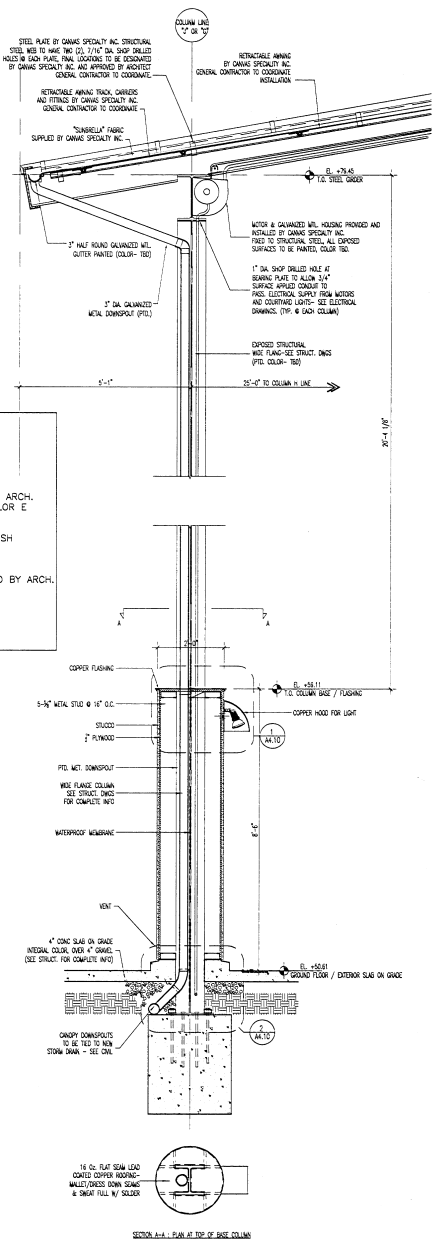
1 EAST ELEVATION
1/4"=1'-0"



2 WEST ELEVATION
1/4"=1'-0"

MATERIAL SCHEDULE

- 1 CLAY TILE ROOFING
- 2 STUCCO COLOR A
- 3 STUCCO COLOR B
- 4 STUCCO COLOR C
- 5 STUCCO COLOR D
- 6 WOOD TRIM FINISH SELECTED BY ARCH.
- 7 WINDOW SURROUND STUCCO COLOR E
- 8 PRECAST WINDOW SILL
- 9 CONCRETE SILL PAINTED
- 10 MANGROVE TRELLIS, STAINED FINISH
- 11 PRECAST COLUMNS
- 12 COPPER CANOPY
- 13 METAL GRILLE, PAINTED
- 14 WOOD RAFTERS, FINISH SELECTED BY ARCH.
- 15 COPPER CUTTER
- 16 COPPER DOWNSPOUT
- 17 STUCCO COLOR F
- 18 COPPER FLASHING
- 19 HONED SLATE PANEL
- 20 PAINTED METAL COLOR G



3 TYPICAL SECTION & PLAN @ T.O. BASE COLUMN
3/4"=1'-0"

MICHAEL GRAVES ARCHITECT
560 BROADWAY, SUITE 401
NEW YORK, NY 10012
TEL: 212 693 2800
FAX: 212 693 2800

HOWARD AND VAN SANDE STRUCTURAL CONSULTANTS INC.
233 Olive St. San Jose, CA 95131
Tel: (408) 963-9801

Penfield & Smith ENGINEERS
101 E. VICTORIA ST. SANTA BARBARA, CA 93101
(805) 963-6632 FAX: (805) 963-6633
MAILING ADDRESS: P.O. BOX 98 (93102)

SUDING DESIGN Landscape Architects
430 East Corrallo Street
Santa Barbara, CA 93101
Telephone: (805) 965-3063
Facsimile: (805) 965-8636

T M A D Engineers, Inc.
Mechanical, Electrical and Structural Consulting Engineers
205 East "N" Street
Oxnard, CA 91124
(805) 361-4000

REVISIONS:

DATE	NO.	DESCRIPTION:
04/16/03	01	FOR DESIGN DEVELOPMENT
04/16/03	02	ISSUED FOR PERMITS AND REVIEW
04/16/03	03	FOR CONSTRUCTION DOCUMENTS
04/16/03	04	FOR CONSTRUCTION DOCUMENTS

APPROVAL OF THIS PLAN DOES NOT CONSTITUTE AN ENDORSEMENT OR GUARANTEE BY THE ARCHITECT OR ENGINEER OF ANY OTHER WORK OR MATERIALS OR METHODS OF CONSTRUCTION. THE ARCHITECT AND ENGINEER SHALL BE AVAILABLE TO THE PROJECT SITE AT ALL TIMES.

Prepared by: *[Signature]*

SEAL

PROJECT NUMBER: 2037 APPROVED BY: *[Signature]*

PROJECT NAME: **KOHN HALL EXPANSION**
#FMS00041/961540

UNIVERSITY OF CALIFORNIA AT SANTA BARBARA

DRAWING TITLE: **COURT YARD CANOPY ELEVATIONS AND SECTION**

DRAWN BY:	CHECKED BY:
DATE: 04-16-03	SCALE: AS NOTED
DRAWING NUMBER:	

A4.07

CSDB DWG # 547-103