

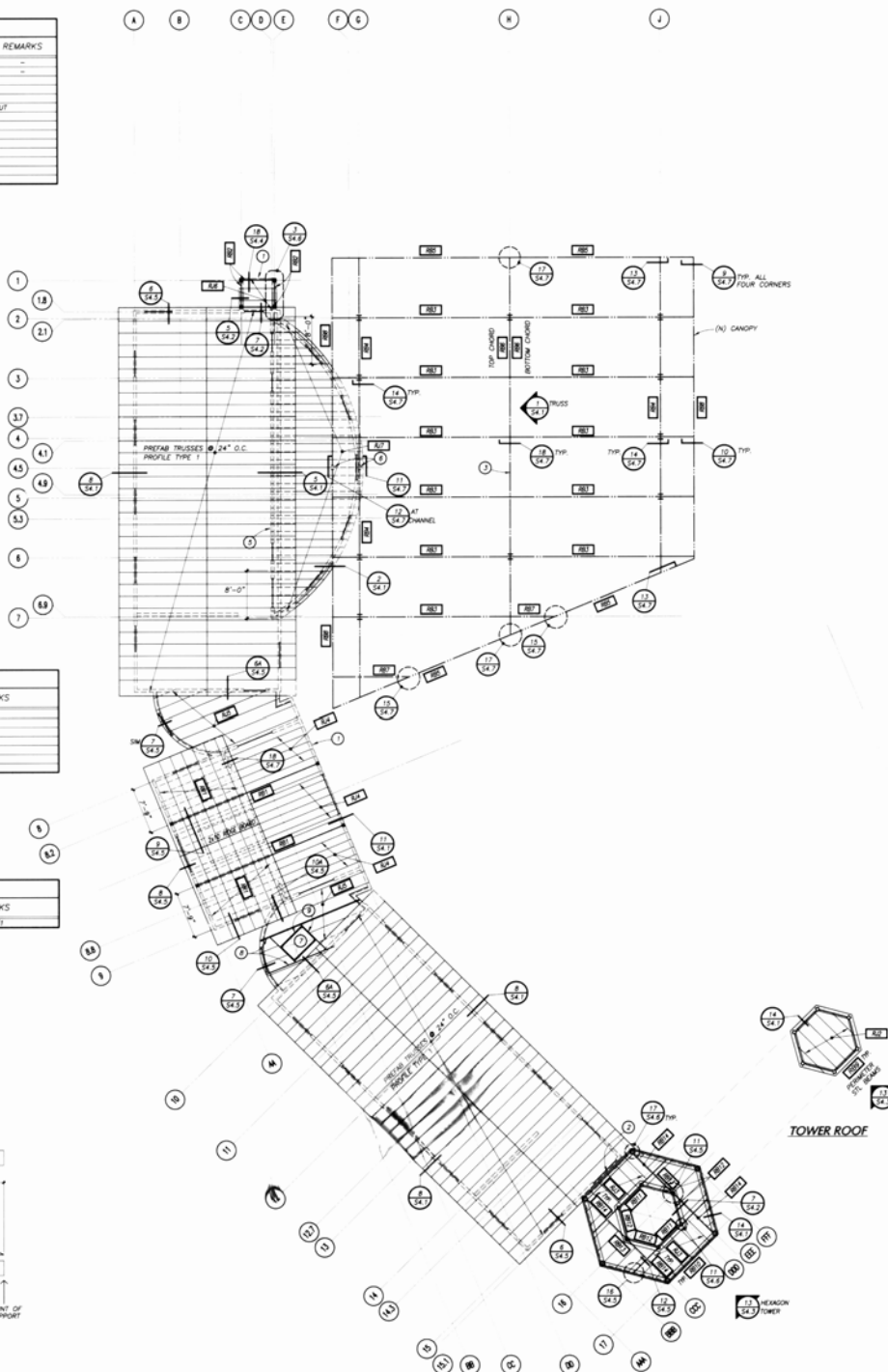
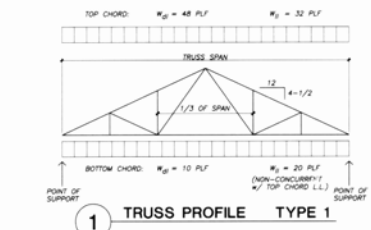
Roof Beam Schedule (RB)				
MARK	Size	Connection @ Support	Connection @ Support	REMARKS
RB1	7 1/2" x 24" PL	ASS EACH SIDE	ASS EACH SIDE	
RB2	7 1/2" x 24" PL	ASS EACH SIDE	ASS EACH SIDE	
RB3	7 1/2" x 24" PL	ASS EACH SIDE	ASS EACH SIDE	
RB4	7 1/2" x 24" PL	ASS EACH SIDE	ASS EACH SIDE	
RB5	7 1/2" x 24" PL	ASS EACH SIDE	ASS EACH SIDE	
RB6	7 1/2" x 24" PL	ASS EACH SIDE	ASS EACH SIDE	
RB7	7 1/2" x 24" PL	ASS EACH SIDE	ASS EACH SIDE	
RB8	7 1/2" x 24" PL	ASS EACH SIDE	ASS EACH SIDE	
RB9	7 1/2" x 24" PL	ASS EACH SIDE	ASS EACH SIDE	
RB10	7 1/2" x 24" PL	ASS EACH SIDE	ASS EACH SIDE	
RB11	7 1/2" x 24" PL	ASS EACH SIDE	ASS EACH SIDE	
RB12	7 1/2" x 24" PL	ASS EACH SIDE	ASS EACH SIDE	
RB13	7 1/2" x 24" PL	ASS EACH SIDE	ASS EACH SIDE	
RB14	7 1/2" x 24" PL	ASS EACH SIDE	ASS EACH SIDE	
RB15	7 1/2" x 24" PL	ASS EACH SIDE	ASS EACH SIDE	

ROOF FRAMING PLAN NOTES:

- REFER TO GENERAL NOTES SHEET 50.1.
- ROOF SHEATHING SHALL BE 2" x 8" PLYWOOD WITH A PANEL IDENTIFICATION INDEX OF 32"/16". PLACE FACE GRAIN PERPENDICULAR TO SUPPORTS. PROVIDE 2" x 4" FLAT BLOCKING BETWEEN JOISTS AT ALL UNSUPPORTED EDGES OF PLYWOOD SHEATHING UNLESS OTHERWISE NOTED ON THE DRAWING.
- EDGE NAILING (E.N.) = 10# @ 4" O.C.
- FIELD NAILING (F.N.) = 10# @ 12" O.C.
- SEE MECHANICAL DRAWINGS FOR LOCATIONS OF SKYLIGHTS AND ROOF HATCHES.
- SEE MECHANICAL DRAWINGS FOR LOCATIONS OF EQUIPMENT AND ROOF DRAINAGE FOR DUCTS.
- UNLESS SPECIFICALLY NOTED ON THE PLANS, FRAMING SHALL NOT BE CUT OR REDUCED WITHOUT PRIOR APPROVAL OF THE STRUCTURAL ENGINEER.
- LOADS
 - 1. DEAD LOAD = 24 psf
 - 2. LIVE LOAD = 18 psf
 - 3. WIND LOAD = 20 psf
 - 4. SNOW LOAD = 20 psf
8. DO NOT OVER CUT AT HATCHES IN FRAMING.
9. WHERE ROOF PITCH CREATES LOW SPOTS THAT WILL NOT PROPERLY DRAIN, PROVIDE CHIMNEYS TO ENSURE ADEQUATE ROOF DRAINAGE.
10. ROOF TRUSS MANUFACTURER SHALL DESIGN AND DETAIL THE TRUSS JOIST FOR THE FOLLOWING DESIGN LOADS:
 - 1. DEAD LOAD = 22 psf + TRUSS WEIGHT
 - 2. LIVE LOAD = 18 psf BASIC RESOLVABLE IN ACCORDANCE WITH CODE
 - 3. CALCULATIONS BASED ON D.B.C. 1998 CODE ALONG WITH SHOP DRAWINGS SHALL BE SUBMITTED TO THE STRUCTURAL ENGINEER FOR APPROVAL PRIOR TO FABRICATION.
11. REFER TO ARCHITECTURAL DRAWINGS FOR TOP OF PLYWOOD ELEVATIONS, LOCATIONS OF NECESSARY DRAIN PANS, HATCHES AND OTHER MISCELLANEOUS ITEMS. COORDINATE WITH FRAMING.

Roof Joist Schedule (RJ)			
MARK	Joist Size	Joist Spacing	REMARKS
RJ1	11-3/8" DEEP 12 PWD 250	24" O.C.	
RJ2	8-1/2" DEEP 12 PWD 250	24" O.C.	
RJ3	18" DEEP 12 PWD 350	24" O.C.	
RJ4	11-3/8" DEEP 12 PWD 250	24" O.C.	
RJ5	11-3/8" DEEP 12 PWD 250	24" O.C.	
RJ6	11-3/8" DEEP 12 PWD 350	24" O.C.	

Roof Rafter Schedule (RR)			
MARK	Rafter Size	Rafter Spacing	REMARKS
RR1	2x8	24" O.C.	R.F. #1



KEYED NOTES:

- 2-1/2" SEISMIC SEPARATION
- 3" SEISMIC SEPARATION
- CANOPY TRUSSES REFER TO 1/24-1 FOR TRUSS ELEVATION
- 3" SEISMIC SEPARATION
- SHADED AREA INDICATES MINIMUM 1/4" OF ROOF SHEATHING SHALL BE TOU @ 3" O.C. BLOCK & STAGGER ALL UNSUPPORTED EDGES
- SPLICE IN BEAM
- ROOF ACCESS
- 3-1/2" x 11-7/8" DE PARALLEL N/ (2) SIMPSON ASS EACH END
- 3-1/2" x 11-7/8" DE PARALLEL IN SIMPSON HW HANGERS

ROOF FRAMING PLAN
SCALE: 1/8" = 1'-0"

MICHAEL GRAVES ARCHITECT
150 BROADWAY, SUITE 401
NEW YORK, NY 10012
TEL: (212) 691-9901
FAX: (212) 691-9907

HOWARD AND VAN SANDE STRUCTURAL CONSULTANTS INC.
101 CHAMBERS STREET, 15TH FLOOR
NEW YORK, NY 10038
TEL: (212) 691-9901
FAX: (212) 691-9907

Penfield Smith ENGINEERS & ARCHITECTS
101 E. VICTORIA ST. SANTA BARBARA, CALIFORNIA 93101
PHONE: (805) 965-3043
FACSIMILE: (805) 965-8636

LLH Engineers, Inc.
140 East "Y" Street
Santa Barbara, CA 93101
PHONE: (805) 965-4000

IDENTIFICATION STAMP
DIV. OF THE STATE PROJECT
NO. 1062 V 0
DATE: 04/18/03
BY: [Signature]

REVISIONS

DATE	NO.	DESCRIPTION
04/18/03	001	FOR DESIGN DEVELOPMENT
07/18/03	002	FOR CONSTRUCTION DOCUMENTS
08/05/03	003	FOR CONSTRUCTION DOCUMENTS

PROJECT NUMBER 102052
APPROVED BY [Signature]

PROJECT NAME
KOHN HALL EXPANSION
#M03008414/981340

UNIVERSITY OF CALIFORNIA AT SANTA BARBARA

DRAWING TITLE
ROOF FRAMING PLAN

DRAWN BY LLH
CHECKED BY LLH

DATE 04/18/03
SCALE 1/8" = 1'-0"

SHEET NUMBER
S3.1
DWG. NO. 587.103