

# Stem Cell II and Cage Wash

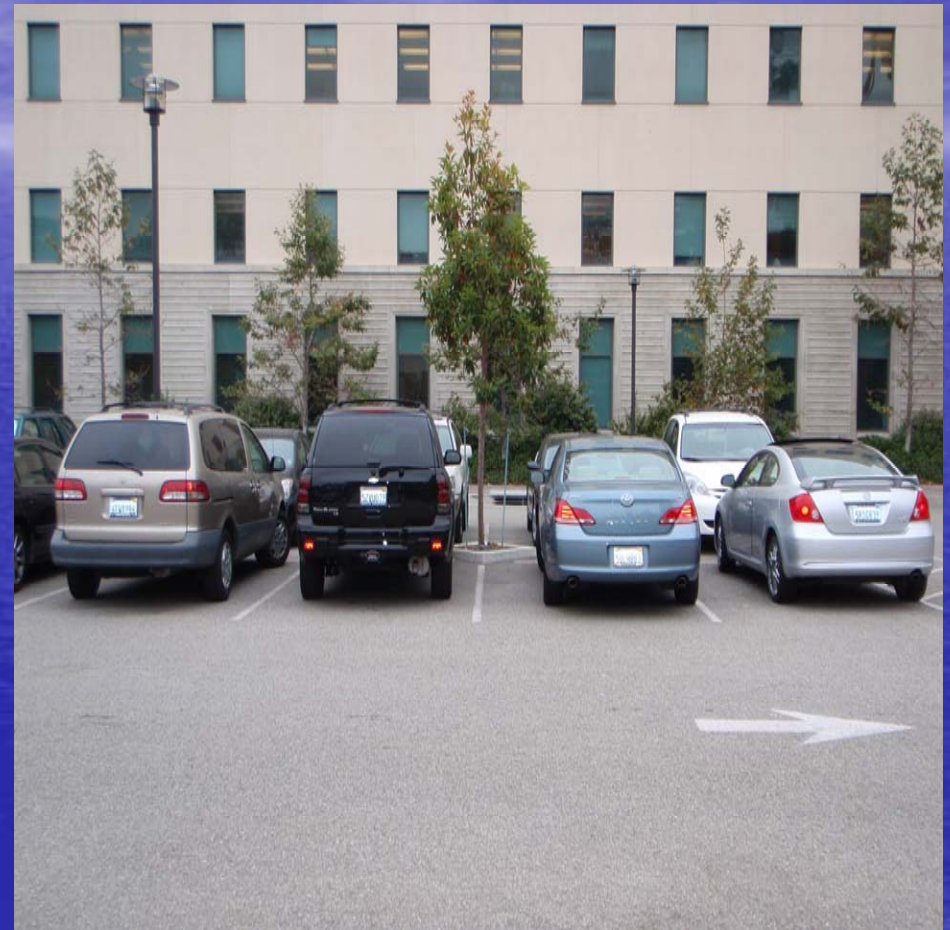
571 Biological Science Building

Pre-bid conference

February 10, 2010

Staging area- parking lot #1

Loading dock area



UCEN road



Staging area- parking lot #1



## Third floor barricades



# Fourth Floor barricades





Sixth floor barricade



# Hazardous Demolition









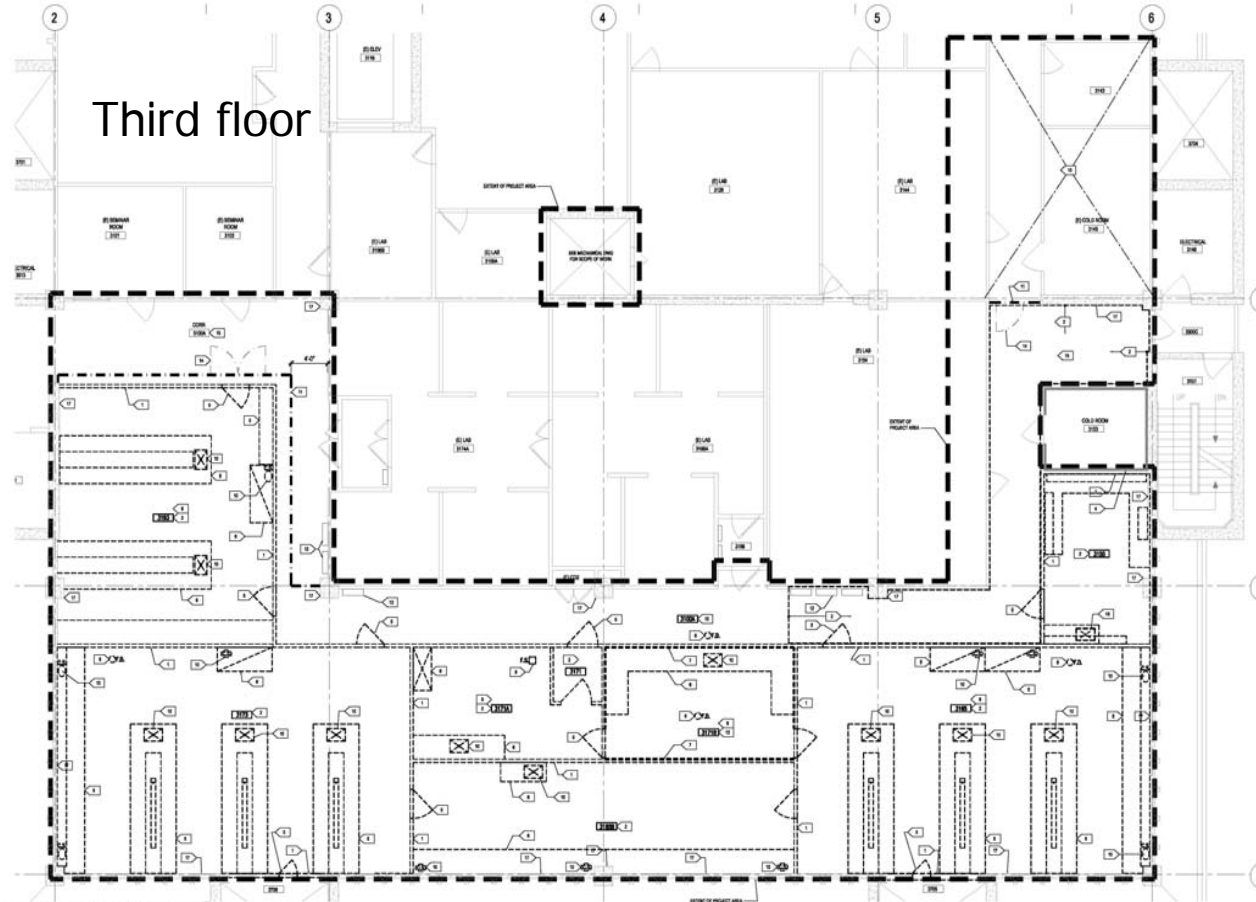




# Unacceptable Demolition



# Third floor



1 PARTIAL 3RD FLOOR DEMOLITION PLAN  
SCALE 1/4" = 1'-0"

**GENERAL NOTES:**

1. REFER TO ALL OTHER GENERAL INFORMATION AND SPECIFICATIONS FOR ALL DEMOLITION REQUIREMENTS.
2. ALL DEMOLITION SHALL BE PERFORMED IN ACCORDANCE WITH THE UNIVERSITY'S REGULATIONS, WITH THE EXCEPTION OF DEMOLITION REQUIREMENTS FOR THE DEMOLITION OF STRUCTURES TO BE DEMOLISHED. ALL DEMOLITION SHALL BE PERFORMED IN ACCORDANCE WITH THE UNIVERSITY'S REGULATIONS, WITH THE EXCEPTION OF DEMOLITION REQUIREMENTS FOR THE DEMOLITION OF STRUCTURES TO BE DEMOLISHED. ALL DEMOLITION SHALL BE PERFORMED IN ACCORDANCE WITH THE UNIVERSITY'S REGULATIONS, WITH THE EXCEPTION OF DEMOLITION REQUIREMENTS FOR THE DEMOLITION OF STRUCTURES TO BE DEMOLISHED.
3. REMOVE ALL EXISTING MATERIALS TO BE DEMOLISHED TO THE LEVEL INDICATED BY THE DEMOLITION SYMBOLS.
4. REMOVE ALL EXISTING MATERIALS TO BE DEMOLISHED TO THE LEVEL INDICATED BY THE DEMOLITION SYMBOLS.
5. REMOVE ALL EXISTING MATERIALS TO BE DEMOLISHED TO THE LEVEL INDICATED BY THE DEMOLITION SYMBOLS.
6. REMOVE ALL EXISTING MATERIALS TO BE DEMOLISHED TO THE LEVEL INDICATED BY THE DEMOLITION SYMBOLS.
7. REMOVE ALL EXISTING MATERIALS TO BE DEMOLISHED TO THE LEVEL INDICATED BY THE DEMOLITION SYMBOLS.
8. REMOVE ALL EXISTING MATERIALS TO BE DEMOLISHED TO THE LEVEL INDICATED BY THE DEMOLITION SYMBOLS.

**PLAN DEMOLITION NOTES:**

1. REMOVE ALL EXISTING MATERIALS TO BE DEMOLISHED TO THE LEVEL INDICATED BY THE DEMOLITION SYMBOLS.
2. REMOVE ALL EXISTING MATERIALS TO BE DEMOLISHED TO THE LEVEL INDICATED BY THE DEMOLITION SYMBOLS.
3. REMOVE ALL EXISTING MATERIALS TO BE DEMOLISHED TO THE LEVEL INDICATED BY THE DEMOLITION SYMBOLS.
4. REMOVE ALL EXISTING MATERIALS TO BE DEMOLISHED TO THE LEVEL INDICATED BY THE DEMOLITION SYMBOLS.
5. REMOVE ALL EXISTING MATERIALS TO BE DEMOLISHED TO THE LEVEL INDICATED BY THE DEMOLITION SYMBOLS.
6. REMOVE ALL EXISTING MATERIALS TO BE DEMOLISHED TO THE LEVEL INDICATED BY THE DEMOLITION SYMBOLS.
7. REMOVE ALL EXISTING MATERIALS TO BE DEMOLISHED TO THE LEVEL INDICATED BY THE DEMOLITION SYMBOLS.
8. REMOVE ALL EXISTING MATERIALS TO BE DEMOLISHED TO THE LEVEL INDICATED BY THE DEMOLITION SYMBOLS.
9. REMOVE ALL EXISTING MATERIALS TO BE DEMOLISHED TO THE LEVEL INDICATED BY THE DEMOLITION SYMBOLS.
10. REMOVE ALL EXISTING MATERIALS TO BE DEMOLISHED TO THE LEVEL INDICATED BY THE DEMOLITION SYMBOLS.

11. REMOVE ALL EXISTING MATERIALS TO BE DEMOLISHED TO THE LEVEL INDICATED BY THE DEMOLITION SYMBOLS.
12. REMOVE ALL EXISTING MATERIALS TO BE DEMOLISHED TO THE LEVEL INDICATED BY THE DEMOLITION SYMBOLS.
13. REMOVE ALL EXISTING MATERIALS TO BE DEMOLISHED TO THE LEVEL INDICATED BY THE DEMOLITION SYMBOLS.
14. REMOVE ALL EXISTING MATERIALS TO BE DEMOLISHED TO THE LEVEL INDICATED BY THE DEMOLITION SYMBOLS.
15. REMOVE ALL EXISTING MATERIALS TO BE DEMOLISHED TO THE LEVEL INDICATED BY THE DEMOLITION SYMBOLS.
16. REMOVE ALL EXISTING MATERIALS TO BE DEMOLISHED TO THE LEVEL INDICATED BY THE DEMOLITION SYMBOLS.
17. REMOVE ALL EXISTING MATERIALS TO BE DEMOLISHED TO THE LEVEL INDICATED BY THE DEMOLITION SYMBOLS.
18. REMOVE ALL EXISTING MATERIALS TO BE DEMOLISHED TO THE LEVEL INDICATED BY THE DEMOLITION SYMBOLS.
19. REMOVE ALL EXISTING MATERIALS TO BE DEMOLISHED TO THE LEVEL INDICATED BY THE DEMOLITION SYMBOLS.
20. REMOVE ALL EXISTING MATERIALS TO BE DEMOLISHED TO THE LEVEL INDICATED BY THE DEMOLITION SYMBOLS.

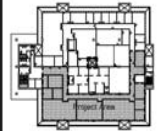


Address: 1000...  
 Phone: 805...  
 Fax: 805...



Biological Science 2 - Building 57  
 Stem Cell II  
 FM090125L / 981630

STEPHEN W. CLARKE C147M



KEY PLAN  
SCALE 1/4" = 1'-0"

NO.	DATE	DESCRIPTION
1	05/01	AS SHOWN
2	05/01	AS SHOWN

PARTIAL 3RD FLOOR DEMOLITION PLAN

**AD1.03**  
 DRAWING FILE NUMBER: 571-183









## Penthouse steel deck



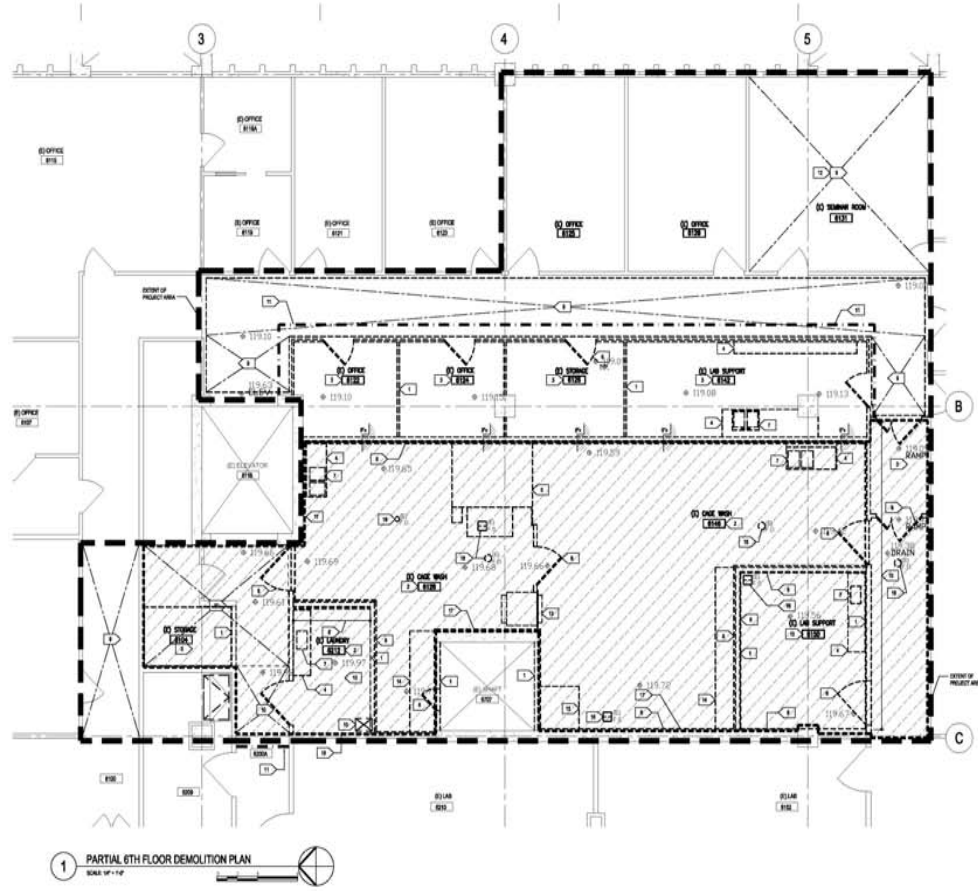
# Southwest and Northwest shaft







# Sixth Floor



1 PARTIAL 6TH FLOOR DEMOLITION PLAN  
SCALE: 1/4" = 1'-0"

**GENERAL NOTES:**

- A. THESE NOTES ARE FOR GENERAL INFORMATION ONLY, AND DO NOT INDICATE ALL SPECIFICATION REQUIREMENTS. GENERAL CONTRACTOR SHALL VERIFY ALL ASPECTS OF ALL FLOOR FINISH TO COMPLETION BEFORE PROCEEDING TO THE GENERAL INFORMATION AND SPECIAL. ALL CONTRACTORS TO NOTIFY THE FULL SCOPE OF WORK TO BE DEMOLISHED TO THE UNIVERSITY REPRESENTATIVE BEFORE THE START OF DEMOLITION WORK.
- B. ALL DEMOLITION WORK SHALL BE PERFORMED IN ACCORDANCE WITH THE UNIVERSITY'S REGULATIONS. NOTE THAT THE BUILDING IS TO REMAIN OCCUPIED THROUGHOUT CONSTRUCTION. THE CONTRACTOR IS RESPONSIBLE FOR REMOVING ALL FURNITURE AND FIXTURES IN A SAFE MANNER THROUGHOUT THE COURSE OF THE CONSTRUCTION. ALL DEMOLITION SHALL BE REMOVED FROM THE CONSTRUCTION SITE ONLY.
- C. REFER TO MECHANICAL, ELECTRICAL, AND PLUMBING DRAWINGS FOR DEMOLITION WORK.
- D. PRIOR TO START OF DEMOLITION WORK, NOTIFY THE UNIVERSITY REPRESENTATIVE ALL REMOVED ITEMS TO BE REMOVED IN A SAFE MANNER.
- E. REMOVE EXISTING WALLS AS REQUIRED FOR CONSTRUCTION ACCESS AND DEMOLISH EXISTING STRUCTURE AND REPLACE TO EXISTING CONDITION.
- F. ALL CONCRETE WORK SHALL BE DONE IN ACCORDANCE WITH THE UNIVERSITY'S REGULATIONS. ALL CONCRETE SHALL BE REMOVED IN ACCORDANCE WITH THE UNIVERSITY'S REGULATIONS AND SPECIFICATIONS.
- G. DOOR SCHEDULES AND FLOOR TRANSITION SHALL BE REMOVED AT ALL DEMOLISHED DOORS.
- H. REMOVE ALL WALL FINISHES AND MASONRY JOISTS/PANELS, WOOD TRIM, ETC. AT WALL SCHEDULES TO DEMOLISH EXISTING STRUCTURE AND REPLACE.
- I. ALL EXISTING TOP OF FINISH ELEVATION PROVIDED BY THE UNIVERSITY REPRESENTATIVE ARE FOR REFERENCE ONLY. CONTRACTOR IS RESPONSIBLE TO VERIFY IN FIELD WITH ELEVATION PROVIDED BY UNIVERSITY FOR REFERENCE.

**PLAN DEMOLITION NOTES**

- 1. REMOVE EXISTING WALLS AND 12" OF CONCRETE CURB WHERE LOCATED.
- 2. REMOVE EXISTING FLOOR FINISHES, CONCRETE TIE AND CONCRETE FLOOR FINISHES AT THE WALLS, EXPOSED TO THE DOWN TO EXISTING FLOOR FINISHES, AND REMOVE TO EXISTING FLOOR FINISHES. REMOVE EXISTING FLOOR FINISHES TO EXISTING FLOOR FINISHES. REMOVE EXISTING FLOOR FINISHES TO EXISTING FLOOR FINISHES.
- 3. REMOVE EXISTING CONCRETE FLOOR FINISHES TO EXISTING FLOOR FINISHES. REMOVE EXISTING CONCRETE FLOOR FINISHES TO EXISTING FLOOR FINISHES.
- 4. REMOVE EXISTING CONCRETE FLOOR FINISHES TO EXISTING FLOOR FINISHES. REMOVE EXISTING CONCRETE FLOOR FINISHES TO EXISTING FLOOR FINISHES.
- 5. REMOVE EXISTING CONCRETE FLOOR FINISHES TO EXISTING FLOOR FINISHES. REMOVE EXISTING CONCRETE FLOOR FINISHES TO EXISTING FLOOR FINISHES.
- 6. REMOVE EXISTING CONCRETE FLOOR FINISHES TO EXISTING FLOOR FINISHES. REMOVE EXISTING CONCRETE FLOOR FINISHES TO EXISTING FLOOR FINISHES.
- 7. REMOVE EXISTING CONCRETE FLOOR FINISHES TO EXISTING FLOOR FINISHES. REMOVE EXISTING CONCRETE FLOOR FINISHES TO EXISTING FLOOR FINISHES.
- 8. REMOVE EXISTING CONCRETE FLOOR FINISHES TO EXISTING FLOOR FINISHES. REMOVE EXISTING CONCRETE FLOOR FINISHES TO EXISTING FLOOR FINISHES.
- 9. REMOVE EXISTING CONCRETE FLOOR FINISHES TO EXISTING FLOOR FINISHES. REMOVE EXISTING CONCRETE FLOOR FINISHES TO EXISTING FLOOR FINISHES.
- 10. REMOVE EXISTING CONCRETE FLOOR FINISHES TO EXISTING FLOOR FINISHES. REMOVE EXISTING CONCRETE FLOOR FINISHES TO EXISTING FLOOR FINISHES.
- 11. REMOVE EXISTING CONCRETE FLOOR FINISHES TO EXISTING FLOOR FINISHES. REMOVE EXISTING CONCRETE FLOOR FINISHES TO EXISTING FLOOR FINISHES.
- 12. REMOVE EXISTING CONCRETE FLOOR FINISHES TO EXISTING FLOOR FINISHES. REMOVE EXISTING CONCRETE FLOOR FINISHES TO EXISTING FLOOR FINISHES.
- 13. REMOVE EXISTING CONCRETE FLOOR FINISHES TO EXISTING FLOOR FINISHES. REMOVE EXISTING CONCRETE FLOOR FINISHES TO EXISTING FLOOR FINISHES.
- 14. REMOVE EXISTING CONCRETE FLOOR FINISHES TO EXISTING FLOOR FINISHES. REMOVE EXISTING CONCRETE FLOOR FINISHES TO EXISTING FLOOR FINISHES.
- 15. REMOVE EXISTING CONCRETE FLOOR FINISHES TO EXISTING FLOOR FINISHES. REMOVE EXISTING CONCRETE FLOOR FINISHES TO EXISTING FLOOR FINISHES.
- 16. REMOVE EXISTING CONCRETE FLOOR FINISHES TO EXISTING FLOOR FINISHES. REMOVE EXISTING CONCRETE FLOOR FINISHES TO EXISTING FLOOR FINISHES.
- 17. REMOVE EXISTING CONCRETE FLOOR FINISHES TO EXISTING FLOOR FINISHES. REMOVE EXISTING CONCRETE FLOOR FINISHES TO EXISTING FLOOR FINISHES.
- 18. REMOVE EXISTING CONCRETE FLOOR FINISHES TO EXISTING FLOOR FINISHES. REMOVE EXISTING CONCRETE FLOOR FINISHES TO EXISTING FLOOR FINISHES.
- 19. REMOVE EXISTING CONCRETE FLOOR FINISHES TO EXISTING FLOOR FINISHES. REMOVE EXISTING CONCRETE FLOOR FINISHES TO EXISTING FLOOR FINISHES.
- 20. REMOVE EXISTING CONCRETE FLOOR FINISHES TO EXISTING FLOOR FINISHES. REMOVE EXISTING CONCRETE FLOOR FINISHES TO EXISTING FLOOR FINISHES.

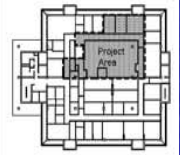


Architecture: CUH2A, Inc.  
 Engineering: JRF Group, Inc.  
 Planning: JRF Group, Inc.



Biological Science 2 - Building 571  
 Cage Wash & Auto Clave  
 FM090221L 981640

STEPHEN W. CLARKE C4708



KEY PLAN  
SCALE: N/A

Rev.	Date	Description
1	11-08-08	CONSTRUCTION DRAWING
2	01-08-09	REVISED CONSTRUCTION DOCUMENT
3	04-18-09	REVISED CONSTRUCTION DOCUMENT
4	02-25-09	REVISED CONSTRUCTION DOCUMENT
5	03-18-09	REVISED CONSTRUCTION DOCUMENT

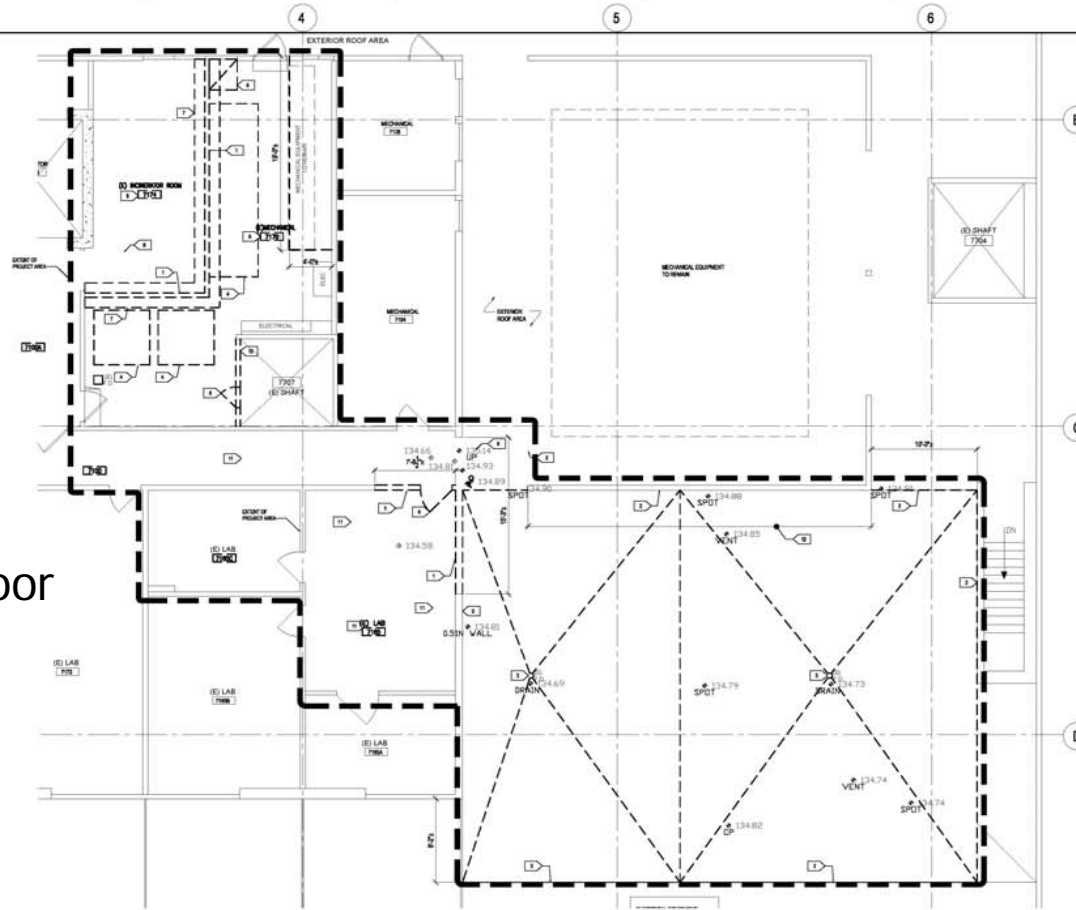
Project Number: 9454	Drawn by: MK
Scale: NONE	Checked by: SC

**PARTIAL 6TH FLOOR DEMOLITION PLAN**

Working Number:

**AD1.06**

# Seventh floor



**1 PARTIAL 7TH FLOOR DEMOLITION PLAN**  
SCALE: 1/4"=1'-0"

**GENERAL NOTES:**

- A. THESE NOTES ARE FOR GENERAL INFORMATION ONLY, AND DO NOT SUPPLEMENT ALL DEMOLITION REQUIREMENTS. CONSULT CONTRACTOR SHALL VERIFY ALL ASPECTS OF ALL WORK PRIOR TO COMMENCING ANY WORK. REFER TO THE DRAWING SPECIFICATIONS AND ACTUAL FIELD CONDITIONS TO DETERMINE THE FULL SCOPE OF WORK TO BE PERFORMED. CONTRACTOR SHALL BE RESPONSIBLE FOR VERIFYING ALL FIELD CONDITIONS PRIOR TO BEGINNING DEMOLITION WORK.
- B. ALL DEMOLITION WORK SHALL BE PERFORMED IN ACCORDANCE WITH THE JURISDICTION'S REGULATIONS, AS WELL AS THE REQUIREMENTS OF THE DEMOLITION CONTRACTOR. THE CONTRACTOR SHALL BE RESPONSIBLE FOR OBTAINING ALL NECESSARY PERMITS AND APPROVALS FROM THE JURISDICTION'S REGULATORY AGENCIES. THE CONTRACTOR SHALL BE RESPONSIBLE FOR OBTAINING ALL NECESSARY PERMITS AND APPROVALS FROM THE JURISDICTION'S REGULATORY AGENCIES.
- C. VERIFY THE MECHANICAL, ELECTRICAL, AND PLUMBING DRAWINGS FOR DEMOLITION WORK.
- D. PRIOR TO START OF DEMOLITION WORK, VERIFY WITH JURISDICTION'S REGULATORY AGENCIES ITEMS TO BE REMOVED, INCLUDING AND EXCLUDED.
- E. ALL CONCRETE REMOVAL SHALL BE DONE PRIOR TO REMOVAL OF EXTERIOR WALLS. EXTERIOR WALLS SHALL BE STRIPPED TO EXPOSE REINFORCING BARS IN ACCORDANCE WITH LOCAL BUILDING CODES.
- F. DEMOLITION AND PLUMBING WORK SHALL BE PERFORMED BY ALL TRADES AND OCCUPATIONS.
- G. VERIFY ALL WALLS AND PARTITIONS ARE REMOVED TO THE FINISH FLOOR. VERIFY THE EXISTING WALLS REMOVED TO THE FINISH FLOOR.
- H. ALL EXISTING TOP OF FINISH ELEVATIONS PROVIDED BY THE ARCHITECT REPRESENTATIVE ARE FOR REFERENCE ONLY. CONTRACTOR SHALL BE RESPONSIBLE TO VERIFY IN FIELD AND DOCUMENTATION. SEE 1000.10 FOR REFERENCE.
- I. SEE NOTES ON SHEET 571-100 FOR PROJECT BUILDINGS.

**PLAN DEMOLITION NOTES**

- 1. REMOVE PLASTER WALL & CONCRETE SURFACE ONLY. CONCRETE SHALL BE LEFT IN PLACE UNLESS OTHERWISE NOTED.
- 2. REMOVE EXTERIOR MASONRY EXPOSED TO TOP OF EXISTING CONCRETE SLAB INCLUDING ALL UPSTANDING TOP OF CONCRETE SLAB WITH REINFORCING BARS AND REINFORCING WALLS IN THE EXTERIOR. EXISTING MASONRY SHALL BE REMOVED AND STORED FOR REUSE.
- 3. REMOVE EXISTING MECHANICAL AND ELECTRICAL EQUIPMENT. REMOVE EXISTING MECHANICAL AND ELECTRICAL EQUIPMENT. REMOVE EXISTING MECHANICAL AND ELECTRICAL EQUIPMENT. REMOVE EXISTING MECHANICAL AND ELECTRICAL EQUIPMENT.
- 4. REMOVE EXISTING MECHANICAL AND ELECTRICAL EQUIPMENT. REMOVE EXISTING MECHANICAL AND ELECTRICAL EQUIPMENT. REMOVE EXISTING MECHANICAL AND ELECTRICAL EQUIPMENT.
- 5. REMOVE EXISTING MECHANICAL AND ELECTRICAL EQUIPMENT. REMOVE EXISTING MECHANICAL AND ELECTRICAL EQUIPMENT. REMOVE EXISTING MECHANICAL AND ELECTRICAL EQUIPMENT.
- 6. REMOVE EXISTING MECHANICAL AND ELECTRICAL EQUIPMENT. REMOVE EXISTING MECHANICAL AND ELECTRICAL EQUIPMENT. REMOVE EXISTING MECHANICAL AND ELECTRICAL EQUIPMENT.
- 7. REMOVE EXISTING MECHANICAL AND ELECTRICAL EQUIPMENT. REMOVE EXISTING MECHANICAL AND ELECTRICAL EQUIPMENT. REMOVE EXISTING MECHANICAL AND ELECTRICAL EQUIPMENT.
- 8. REMOVE EXISTING MECHANICAL AND ELECTRICAL EQUIPMENT. REMOVE EXISTING MECHANICAL AND ELECTRICAL EQUIPMENT. REMOVE EXISTING MECHANICAL AND ELECTRICAL EQUIPMENT.
- 9. REMOVE EXISTING MECHANICAL AND ELECTRICAL EQUIPMENT. REMOVE EXISTING MECHANICAL AND ELECTRICAL EQUIPMENT. REMOVE EXISTING MECHANICAL AND ELECTRICAL EQUIPMENT.
- 10. REMOVE EXISTING MECHANICAL AND ELECTRICAL EQUIPMENT. REMOVE EXISTING MECHANICAL AND ELECTRICAL EQUIPMENT. REMOVE EXISTING MECHANICAL AND ELECTRICAL EQUIPMENT.



Architecture  
Engineering  
Planning

Project Title



Biological Science 2 - Building 57  
Cage Wash & Auto Clave  
FM0902211.981640

HYPERLINK CLASSIFICATION



Rev.	Date	Description
01	01/15/10	CONSTRUCTION DOCUMENTS
02	02/15/10	CONSTRUCTION DOCUMENTS
03	03/15/10	CONSTRUCTION DOCUMENTS
04	04/15/10	CONSTRUCTION DOCUMENTS
05	05/15/10	CONSTRUCTION DOCUMENTS

Project Number:	94504	Drawn by:	MK
Scale:	AS NOTED	Checked by:	SC
Project Title:	PARTIAL 7TH FLOOR DEMOLITION PLAN		

Revised/Revised:

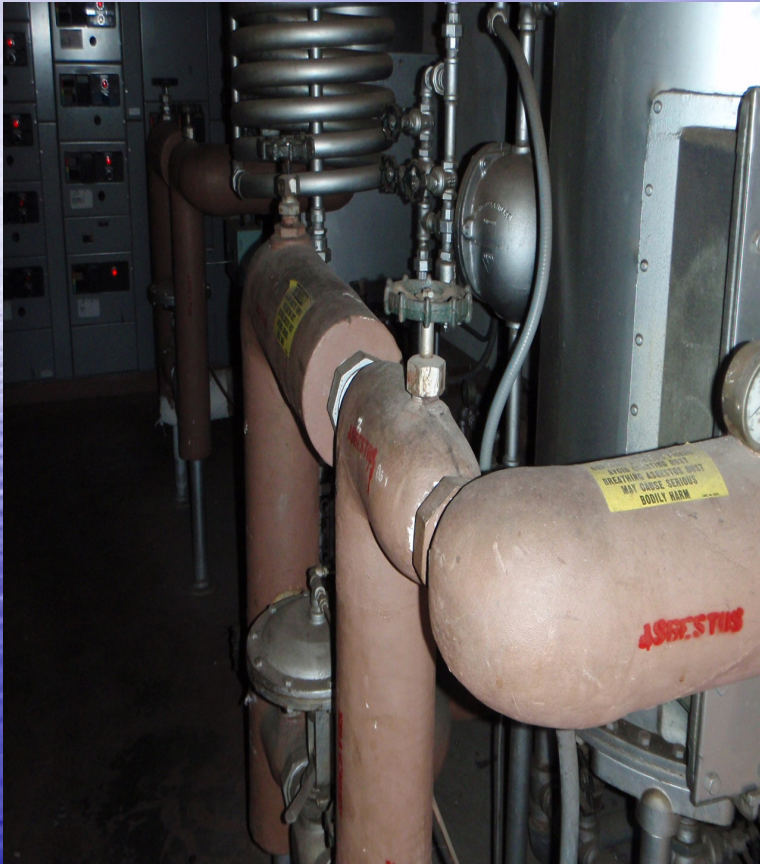
**AD1.07**

# 7<sup>th</sup> floor penthouse





## 7<sup>th</sup> floor penthouse



# 7<sup>th</sup> floor penthouse







# General Demolition

# Cold Rooms











The background is a blue gradient with a horizon line. The top half shows a lighter blue sky with wispy white clouds, while the bottom half shows a darker blue sea with gentle ripples. The text "Occupied labs" is centered in the middle of the image.

Occupied labs





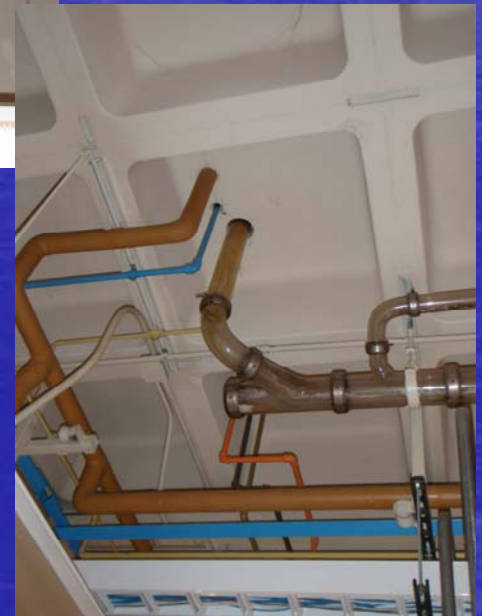








**ROOM 1544**



# Smith lab 2173-a,b,c,d plumbing removal





# Finkelstein lab 2175



## Lab 2181



Acid waste lines will be removed.  
New floor drains will be installed  
for third floor equipment and  
autoclave room.

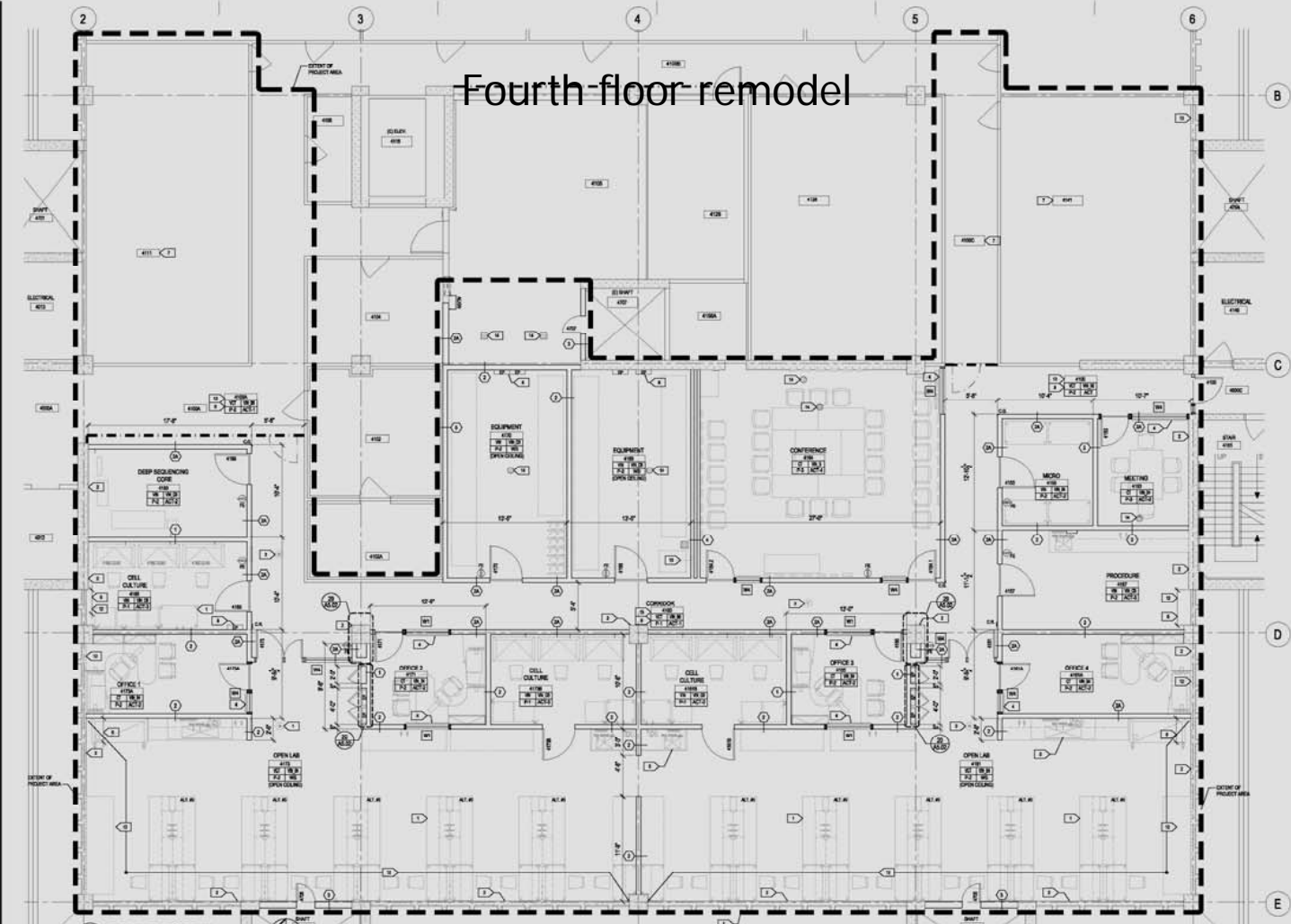
LAB 2159



LAB 2161







**GENERAL NOTES**

1. ALL DIMENSIONS AND NOTES TO BE READ IN CONJUNCTION WITH THE RELEVANT SPECIFICATIONS.
2. REFER TO DRAWINGS AND SPECIFICATIONS FOR FINISHES, MATERIALS, DIMENSIONS, AND DETAILS. REFER TO DRAWINGS AND SPECIFICATIONS FOR FINISHES, MATERIALS, DIMENSIONS, AND DETAILS. REFER TO DRAWINGS AND SPECIFICATIONS FOR FINISHES, MATERIALS, DIMENSIONS, AND DETAILS.
3. REFER TO DRAWINGS AND SPECIFICATIONS FOR FINISHES, MATERIALS, DIMENSIONS, AND DETAILS. REFER TO DRAWINGS AND SPECIFICATIONS FOR FINISHES, MATERIALS, DIMENSIONS, AND DETAILS.
4. REFER TO DRAWINGS AND SPECIFICATIONS FOR FINISHES, MATERIALS, DIMENSIONS, AND DETAILS. REFER TO DRAWINGS AND SPECIFICATIONS FOR FINISHES, MATERIALS, DIMENSIONS, AND DETAILS.
5. REFER TO DRAWINGS AND SPECIFICATIONS FOR FINISHES, MATERIALS, DIMENSIONS, AND DETAILS. REFER TO DRAWINGS AND SPECIFICATIONS FOR FINISHES, MATERIALS, DIMENSIONS, AND DETAILS.
6. REFER TO DRAWINGS AND SPECIFICATIONS FOR FINISHES, MATERIALS, DIMENSIONS, AND DETAILS. REFER TO DRAWINGS AND SPECIFICATIONS FOR FINISHES, MATERIALS, DIMENSIONS, AND DETAILS.
7. REFER TO DRAWINGS AND SPECIFICATIONS FOR FINISHES, MATERIALS, DIMENSIONS, AND DETAILS. REFER TO DRAWINGS AND SPECIFICATIONS FOR FINISHES, MATERIALS, DIMENSIONS, AND DETAILS.
8. REFER TO DRAWINGS AND SPECIFICATIONS FOR FINISHES, MATERIALS, DIMENSIONS, AND DETAILS. REFER TO DRAWINGS AND SPECIFICATIONS FOR FINISHES, MATERIALS, DIMENSIONS, AND DETAILS.
9. REFER TO DRAWINGS AND SPECIFICATIONS FOR FINISHES, MATERIALS, DIMENSIONS, AND DETAILS. REFER TO DRAWINGS AND SPECIFICATIONS FOR FINISHES, MATERIALS, DIMENSIONS, AND DETAILS.
10. REFER TO DRAWINGS AND SPECIFICATIONS FOR FINISHES, MATERIALS, DIMENSIONS, AND DETAILS. REFER TO DRAWINGS AND SPECIFICATIONS FOR FINISHES, MATERIALS, DIMENSIONS, AND DETAILS.
11. REFER TO DRAWINGS AND SPECIFICATIONS FOR FINISHES, MATERIALS, DIMENSIONS, AND DETAILS. REFER TO DRAWINGS AND SPECIFICATIONS FOR FINISHES, MATERIALS, DIMENSIONS, AND DETAILS.
12. REFER TO DRAWINGS AND SPECIFICATIONS FOR FINISHES, MATERIALS, DIMENSIONS, AND DETAILS. REFER TO DRAWINGS AND SPECIFICATIONS FOR FINISHES, MATERIALS, DIMENSIONS, AND DETAILS.
13. REFER TO DRAWINGS AND SPECIFICATIONS FOR FINISHES, MATERIALS, DIMENSIONS, AND DETAILS. REFER TO DRAWINGS AND SPECIFICATIONS FOR FINISHES, MATERIALS, DIMENSIONS, AND DETAILS.
14. REFER TO DRAWINGS AND SPECIFICATIONS FOR FINISHES, MATERIALS, DIMENSIONS, AND DETAILS. REFER TO DRAWINGS AND SPECIFICATIONS FOR FINISHES, MATERIALS, DIMENSIONS, AND DETAILS.
15. REFER TO DRAWINGS AND SPECIFICATIONS FOR FINISHES, MATERIALS, DIMENSIONS, AND DETAILS. REFER TO DRAWINGS AND SPECIFICATIONS FOR FINISHES, MATERIALS, DIMENSIONS, AND DETAILS.
16. REFER TO DRAWINGS AND SPECIFICATIONS FOR FINISHES, MATERIALS, DIMENSIONS, AND DETAILS. REFER TO DRAWINGS AND SPECIFICATIONS FOR FINISHES, MATERIALS, DIMENSIONS, AND DETAILS.
17. REFER TO DRAWINGS AND SPECIFICATIONS FOR FINISHES, MATERIALS, DIMENSIONS, AND DETAILS. REFER TO DRAWINGS AND SPECIFICATIONS FOR FINISHES, MATERIALS, DIMENSIONS, AND DETAILS.
18. REFER TO DRAWINGS AND SPECIFICATIONS FOR FINISHES, MATERIALS, DIMENSIONS, AND DETAILS. REFER TO DRAWINGS AND SPECIFICATIONS FOR FINISHES, MATERIALS, DIMENSIONS, AND DETAILS.
19. REFER TO DRAWINGS AND SPECIFICATIONS FOR FINISHES, MATERIALS, DIMENSIONS, AND DETAILS. REFER TO DRAWINGS AND SPECIFICATIONS FOR FINISHES, MATERIALS, DIMENSIONS, AND DETAILS.
20. REFER TO DRAWINGS AND SPECIFICATIONS FOR FINISHES, MATERIALS, DIMENSIONS, AND DETAILS. REFER TO DRAWINGS AND SPECIFICATIONS FOR FINISHES, MATERIALS, DIMENSIONS, AND DETAILS.

# Fourth-floor remodel

**PLAN SPECIFIC NOTES**

1. NEW CONCRETE CHANGING EQUIPMENT SET LAB PLAN
2. NEW "ST" TERRAZZO" ON SLAB CONCRETE SURFACE BEFORE PAINT
3. NEW FLOOR FINISHES - SEE FINISHING
4. FINISHING PLAN - SEE FINISHING DRAWINGS
5. BLACK SAT. GROUT WITH APPROVED BLACK GLASS FILL
6. GROUT FLOOR JOINTS WITH APPROVED BLACK GLASS FILL
7. GROUT FLOOR JOINTS WITH APPROVED BLACK GLASS FILL
8. GROUT FLOOR JOINTS WITH APPROVED BLACK GLASS FILL
9. GROUT FLOOR JOINTS WITH APPROVED BLACK GLASS FILL
10. GROUT FLOOR JOINTS WITH APPROVED BLACK GLASS FILL
11. GROUT FLOOR JOINTS WITH APPROVED BLACK GLASS FILL
12. GROUT FLOOR JOINTS WITH APPROVED BLACK GLASS FILL
13. GROUT FLOOR JOINTS WITH APPROVED BLACK GLASS FILL
14. GROUT FLOOR JOINTS WITH APPROVED BLACK GLASS FILL
15. GROUT FLOOR JOINTS WITH APPROVED BLACK GLASS FILL
16. GROUT FLOOR JOINTS WITH APPROVED BLACK GLASS FILL
17. GROUT FLOOR JOINTS WITH APPROVED BLACK GLASS FILL
18. GROUT FLOOR JOINTS WITH APPROVED BLACK GLASS FILL
19. GROUT FLOOR JOINTS WITH APPROVED BLACK GLASS FILL
20. GROUT FLOOR JOINTS WITH APPROVED BLACK GLASS FILL

**FINISH LEGEND**

ROOM NUMBER	FINISH
101	FLOR. FINISH
102	FLOR. FINISH
103	FLOR. FINISH
104	FLOR. FINISH
105	FLOR. FINISH
106	FLOR. FINISH
107	FLOR. FINISH
108	FLOR. FINISH
109	FLOR. FINISH
110	FLOR. FINISH
111	FLOR. FINISH
112	FLOR. FINISH
113	FLOR. FINISH
114	FLOR. FINISH
115	FLOR. FINISH
116	FLOR. FINISH
117	FLOR. FINISH
118	FLOR. FINISH
119	FLOR. FINISH
120	FLOR. FINISH

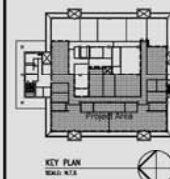


Address: CUH2A, Inc.  
 2000 S. 10th St.  
 San Francisco, CA  
 94116-1212  
 Tel: 415.774.2822  
 Fax: 415.774.2822



Biological Science 2 - Building 571  
 Stem Cell II  
 FM090125L / 981630

STYVEN K. CLARKS CLUTM



KEY PLAN  
 SCALE: N/A

PARTIAL 4TH FLOOR PLAN

**A1.04**  
 DRAWING FILE NUMBER: 571-183

## Third Floor



Stem cell 1 3173, 3166











Fourth Floor

4111 LAB  
one week demolition  
one week replacement



WEST HOT DUCT



WEST COLD DUCT

4111 LAB  
north supply shaft



4141 Lab  
south air shaft  
smoke damper  
replacement





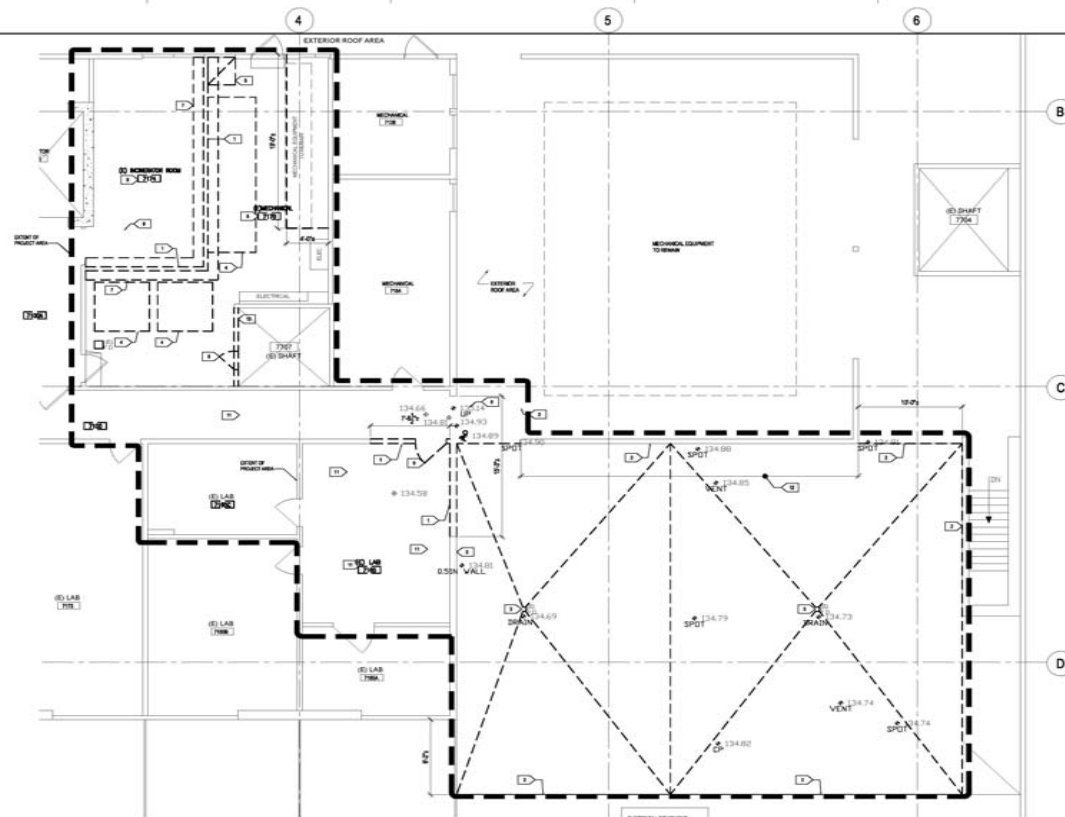






# Clegg lab 5160





1 PARTIAL 7TH FLOOR DEMOLITION PLAN  
SCALE: 1/8" = 1'-0"

**GENERAL NOTES:**

1. REFER TO ALL OTHER GENERAL INFORMATION ON THIS SHEET FOR ALL DEMOLITION AND REMEDIATION. DEMOLITION CONTRACTOR SHALL VERIFY ALL WORK SHALL BE COMPLETED AND VERIFY WITH THE CONTRACTOR AND ARCHITECT FOR ALL DEMOLITION AND REMEDIATION WORK. REFER TO THE CONTRACTOR AND ARCHITECT FOR ALL DEMOLITION AND REMEDIATION WORK.
2. ALL DEMOLITION WORK SHALL BE COMPLETED AND VERIFIED WITH THE ARCHITECT AND CONTRACTOR. ALL DEMOLITION WORK SHALL BE COMPLETED AND VERIFIED WITH THE ARCHITECT AND CONTRACTOR. ALL DEMOLITION WORK SHALL BE COMPLETED AND VERIFIED WITH THE ARCHITECT AND CONTRACTOR.
3. REMOVE ALL MECHANICAL, ELECTRICAL, AND PLUMBING EQUIPMENT FOR DEMOLITION WORK.
4. PRIOR TO START OF DEMOLITION WORK, VERIFY WITH UNIVERSITY REPRESENTATIVE ALL DEMOLITION TO BE REMOVED IS AS SHOWN AND APPROVED.
5. ALL CONCRETE AND MASONRY WALLS AND MESH FACING OF EXTERIOR WALLS WITHIN THE PROJECT AREA SHALL BE STRIPPED TO EXPOSE REINFORCING BARS AND CONCRETE.
6. DEMOLITION WORK SHALL BE COMPLETED AND VERIFIED WITH THE ARCHITECT AND CONTRACTOR.
7. REMOVAL OF ALL MECHANICAL AND ELECTRICAL EQUIPMENT SHALL BE COMPLETED AND VERIFIED WITH THE ARCHITECT AND CONTRACTOR.
8. ALL DEMOLITION WORK SHALL BE COMPLETED AND VERIFIED WITH THE ARCHITECT AND CONTRACTOR.
9. ALL DEMOLITION WORK SHALL BE COMPLETED AND VERIFIED WITH THE ARCHITECT AND CONTRACTOR.
10. ALL DEMOLITION WORK SHALL BE COMPLETED AND VERIFIED WITH THE ARCHITECT AND CONTRACTOR.

**PLAN DEMOLITION NOTES**

1. REMOVE PLASTER WALL & CONCRETE OVERLAP FROM ROOM 700. REFER TO SHEET 07-100 FOR ALL DEMOLITION AND REMEDIATION WORK.
2. REMOVE EXTERIOR MASONRY WALL TO TOP OF MESH FACING OF CONCRETE SLAB, INCLUDING ALL CONCRETE AND MASONRY WALLS TO BE DEMOLISHED. REFER TO SHEET 07-100 FOR ALL DEMOLITION AND REMEDIATION WORK.
3. REMOVE EXTERIOR MASONRY WALL TO TOP OF MESH FACING OF CONCRETE SLAB, INCLUDING ALL CONCRETE AND MASONRY WALLS TO BE DEMOLISHED. REFER TO SHEET 07-100 FOR ALL DEMOLITION AND REMEDIATION WORK.
4. REMOVE EXTERIOR MASONRY WALL TO TOP OF MESH FACING OF CONCRETE SLAB, INCLUDING ALL CONCRETE AND MASONRY WALLS TO BE DEMOLISHED. REFER TO SHEET 07-100 FOR ALL DEMOLITION AND REMEDIATION WORK.
5. REMOVE EXTERIOR MASONRY WALL TO TOP OF MESH FACING OF CONCRETE SLAB, INCLUDING ALL CONCRETE AND MASONRY WALLS TO BE DEMOLISHED. REFER TO SHEET 07-100 FOR ALL DEMOLITION AND REMEDIATION WORK.
6. REMOVE EXTERIOR MASONRY WALL TO TOP OF MESH FACING OF CONCRETE SLAB, INCLUDING ALL CONCRETE AND MASONRY WALLS TO BE DEMOLISHED. REFER TO SHEET 07-100 FOR ALL DEMOLITION AND REMEDIATION WORK.
7. REMOVE EXTERIOR MASONRY WALL TO TOP OF MESH FACING OF CONCRETE SLAB, INCLUDING ALL CONCRETE AND MASONRY WALLS TO BE DEMOLISHED. REFER TO SHEET 07-100 FOR ALL DEMOLITION AND REMEDIATION WORK.
8. REMOVE EXTERIOR MASONRY WALL TO TOP OF MESH FACING OF CONCRETE SLAB, INCLUDING ALL CONCRETE AND MASONRY WALLS TO BE DEMOLISHED. REFER TO SHEET 07-100 FOR ALL DEMOLITION AND REMEDIATION WORK.
9. REMOVE EXTERIOR MASONRY WALL TO TOP OF MESH FACING OF CONCRETE SLAB, INCLUDING ALL CONCRETE AND MASONRY WALLS TO BE DEMOLISHED. REFER TO SHEET 07-100 FOR ALL DEMOLITION AND REMEDIATION WORK.
10. REMOVE EXTERIOR MASONRY WALL TO TOP OF MESH FACING OF CONCRETE SLAB, INCLUDING ALL CONCRETE AND MASONRY WALLS TO BE DEMOLISHED. REFER TO SHEET 07-100 FOR ALL DEMOLITION AND REMEDIATION WORK.

DRAWING FILE NUMBER: 571-184



Address: 2800 Santa Monica Blvd., Suite 200, Santa Monica, CA 90404-2000  
Phone: 424-307-1212  
Fax: 424-307-1200



Biological Science 2 - Building 57  
Cage Wash & Auto Clave  
FM090221L981640

PREPARED BY: CLARENCE CLARK



KEY PLAN  
SCALE: 1/8" = 1'-0"

NO.	DATE	DESCRIPTION
1	01-10-09	CONSTRUCTION DOCUMENTS
2	02-10-09	ISSUE FOR CONSTRUCTION DOCUMENTS
3	03-10-09	ISSUE FOR CONSTRUCTION DOCUMENTS
4	04-10-09	ISSUE FOR CONSTRUCTION DOCUMENTS
5	05-10-09	ISSUE FOR CONSTRUCTION DOCUMENTS

Project Number: 94554  
Client: MK  
AS NOTED  
SC

Partial 7th Floor Demolition Plan

AD1.07

# Cage wash rigging



Footprint of new penthouse roof addition

7<sup>th</sup> floor penthouse cage wash addition approximately 1200sq. Ft.



North penthouse roof



south





# Cage wash



# Cage wash room





6<sup>th</sup> floor corridors

