

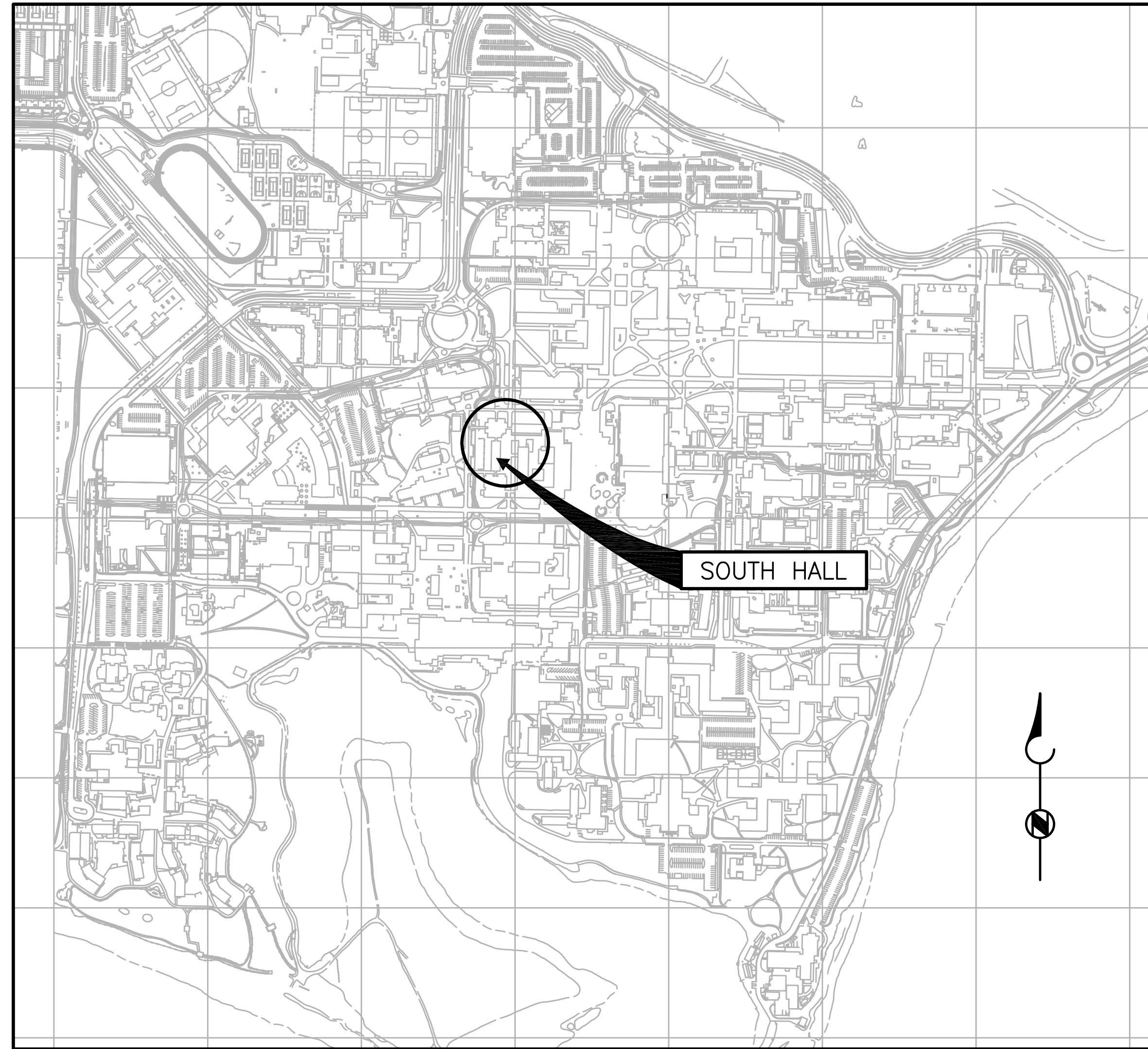
UNIVERSITY OF CALIFORNIA, SANTA BARBARA

SOUTH HALL ECM

BUILDING 528

FM130472

LOCATION MAP



UCSB SITE MAP

PROJECT ADDRESS:
 FACILITIES MANAGEMENT
 BUILDING NO. 439
 SANTA BARBARA, CA 93106

INDEX OF DRAWINGS

DWG NO.	DESCRIPTION
T1	LOCATION MAP, INDEX OF DRAWINGS, GENERAL NOTES, AND APPLICABLE CODES
MECHANICAL	
M1	FIRST FLOOR PLAN
M2	TYPICAL SECOND THROUGH SIX FLOOR PLAN
M3	FIRST FLOOR PLAN AND TYPICAL SECOND THROUGH SIX FLOOR PLAN
M4	FIRST FLOOR PLAN
M5	TYPICAL SECOND THROUGH SIX FLOOR PLAN
M6	FIRST FLOOR PLAN AND TYPICAL SECOND THROUGH SIX FLOOR PLAN

GENERAL NOTES

- IN BRIEF, THIS PROJECT INVOLVES THE REPLACEMENT OF NUMEROUS EXISTING PNEUMATIC THERMOSTATS WITH NEW, BACNET COMPATIBLE, WIRELESS PNEUMATIC THERMOSTATS (WPTs), FOR REMOTE CONTROL AND MONITORING. THE INSTALLATION OF THE WPTs PROVIDE FOR EFFECTIVE CONTROL STRATEGIES AND ENERGY CONSERVATION MEASURES (ECMs). THE SYSTEM ARCHITECTURE INVOLVES THE USE OF COMMUNICATION GATEWAYS AND WIRELESS REPEATERS TO COMMUNICATE BETWEEN THE WPTs AND THE REMOTE CONTROL CENTER.
- ALL WORK SHALL CONFORM TO THE REQUIREMENTS OF THE CALIFORNIA ADMINISTRATIVE CODES, CALIFORNIA BUILDING STANDARD CODES, NFPA STANDARDS, LOCAL CODES, AND REQUIREMENTS SPECIFIED HEREIN. WHERE A CONFLICT BETWEEN CODES AND/OR STANDARDS OCCUR, THE MOST STRINGENT REQUIREMENTS SHALL PREVAIL.
- THE CONTRACTOR SHALL VISIT THE JOB SITE PRIOR TO BID IN ORDER TO THOROUGHLY FAMILIARIZE THEMSELVES WITH THE EXISTING FIELD CONDITIONS AND SCOPE OF WORK TO BE PERFORMED. THE CONTRACTOR SHALL ALSO VERIFY ALL DIMENSIONS OF THE EXISTING FACILITIES AND EQUIPMENT PERTINENT TO THE SCOPE OF WORK TO THIS PROJECT PRIOR TO BID.
- THE CONTRACTOR SHALL PROVIDE AND BE RESPONSIBLE FOR PROTECTION AND REPAIR OF ADJACENT EXISTING SURFACES, DUCT, AREAS, PIPING, CONDUIT, AND EQUIPMENT WHICH MAY BE DAMAGED AS A RESULT OF DEMOLITION AND/OR NEW WORK. THE CONTRACTOR SHALL NOT DEMOLISH OR ALTER ANY WORK WHICH IS NOT A PART OF THIS CONTRACT WITHOUT WRITTEN PERMISSION FROM THE UNIVERSITY.
- CONTRACTOR SHALL PROVIDE CSFM APPROVED FIRE SEAL FOR PIPE AND CONDUIT AT FIRE RATED PENETRATIONS.
- CONTRACTOR SHALL PATCH, SEAL AND PAINT TO MATCH EXISTING ANY DEMOLITION TO EXISTING WALLS AND CEILINGS REQUIRED TO FACILITATE CONSTRUCTION.

APPLICABLE CODES

- 2010 CALIFORNIA BUILDING CODE (CBC), PART 2, TITLE 24 C.C.R. (BASED ON 2009 INTERNATIONAL BUILDING CODE)
- 2010 CALIFORNIA ELECTRIC CODE, PART 3, TITLE 24 C.C.R.
- 2010 CALIFORNIA MECHANICAL CODE, PART 4, TITLE 24 C.C.R.
- 2010 CALIFORNIA PLUMBING CODE, PART 5, TITLE 24 C.C.R.
- 2010 CALIFORNIA ENERGY CODE, PART 6, TITLE 24 C.C.R.
- 2010 CALIFORNIA FIRE CODE, PART 9, TITLE 24 C.C.R. (BASED ON 2009 INTERNATIONAL FIRE CODE)
- NATIONAL FIRE PROTECTION ASSOCIATION (NFPA)

SCHEMATIC DESIGN
NOT FOR CONSTRUCTION

GOSS ENGINEERING, INC.
 CORONA, CALIFORNIA PH: (951) 340-1977 FX: (951) 340-1090

LINE IS 2 INCHES
 AT FULL SCALE
 (IF NOT 2"=SCALE ACCORDINGLY)
 FILE NO.: 113-04-01.3

DRAWN BY: AEP
 DESIGNED BY: JDA
 CHECKED BY: NDU
 CHECKED BY: LBH

SUBMITTED _____ DATE _____
 PROJECT MANAGER _____
 APPROVED _____ DATE _____

REVISIONS					
ZONE	REV.	DESCRIPTION	BY	DATE	APP.

UNIVERSITY OF CALIFORNIA,
 SANTA BARBARA

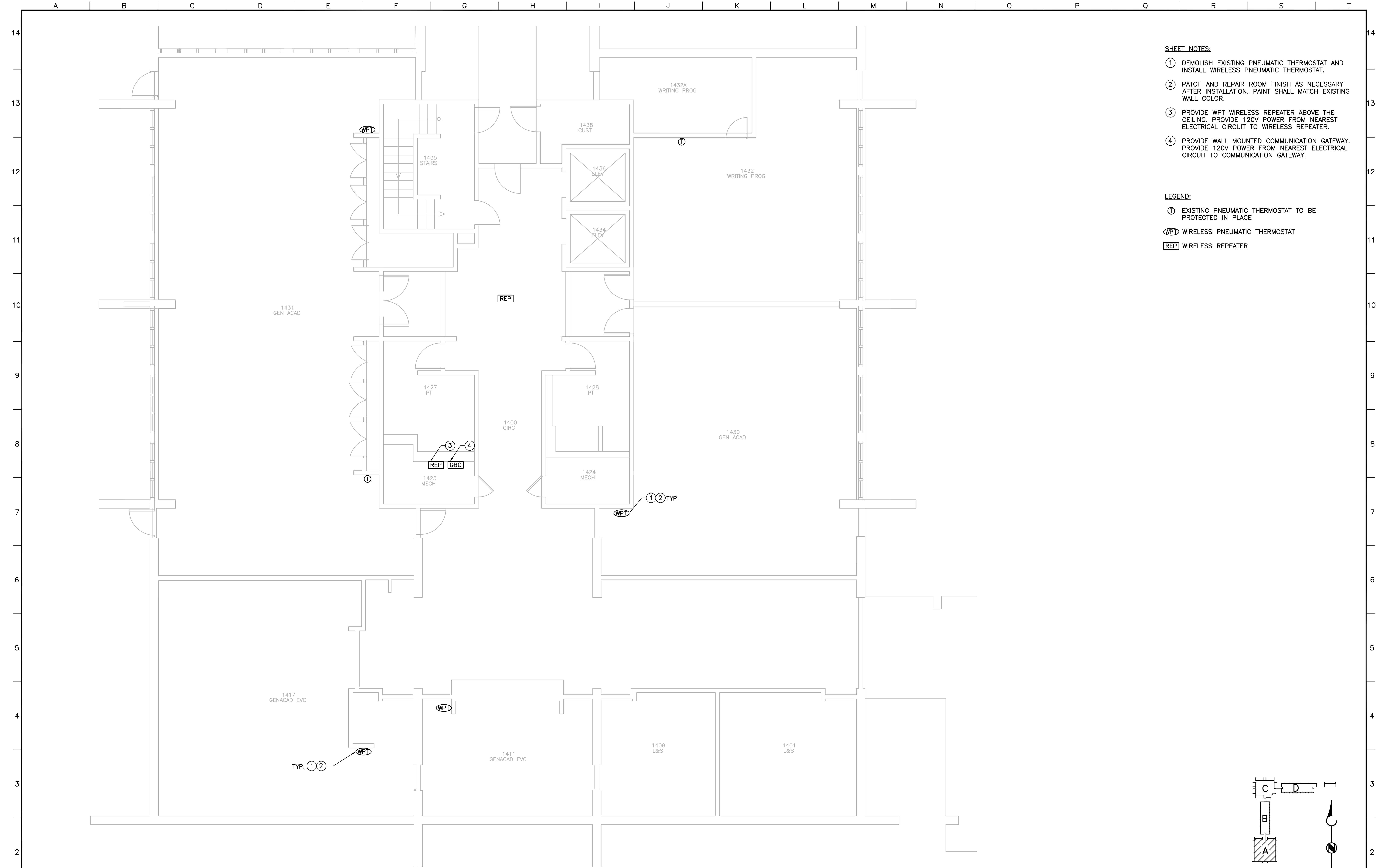
BUILDING ECM SCHEMATIC DESIGN
 SOUTH HALL 528 FM130472

LOCATION MAP, INDEX OF
 DRAWINGS, GENERAL NOTES, AND
 APPLICABLE CODES

DATE
 6/17/13

DRAWING NUMBER
T1

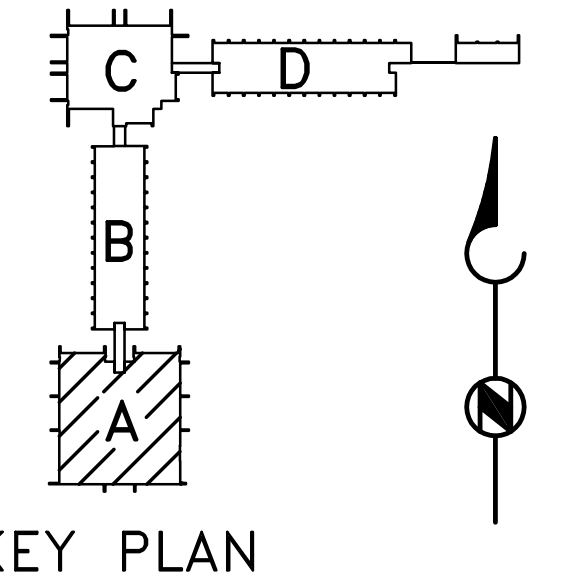
SHEET NUMBER
 of



- SHEET NOTES:**
- ① DEMOLISH EXISTING PNEUMATIC THERMOSTAT AND INSTALL WIRELESS PNEUMATIC THERMOSTAT.
 - ② PATCH AND REPAIR ROOM FINISH AS NECESSARY AFTER INSTALLATION. PAINT SHALL MATCH EXISTING WALL COLOR.
 - ③ PROVIDE WPT WIRELESS REPEATER ABOVE THE CEILING. PROVIDE 120V POWER FROM NEAREST ELECTRICAL CIRCUIT TO WIRELESS REPEATER.
 - ④ PROVIDE WALL MOUNTED COMMUNICATION GATEWAY. PROVIDE 120V POWER FROM NEAREST ELECTRICAL CIRCUIT TO COMMUNICATION GATEWAY.

- LEGEND:**
- Ⓣ EXISTING PNEUMATIC THERMOSTAT TO BE PROTECTED IN PLACE
 - WPT WIRELESS PNEUMATIC THERMOSTAT
 - REP WIRELESS REPEATER

FIRST FLOOR PLAN
SCALE: 1/4" = 1'-0"



SCHMATIC DESIGN
NOT FOR CONSTRUCTION

GOSS ENGINEERING, INC.
CORONA, CALIFORNIA PH: (951) 340-1977 FX: (951) 340-1090

SUBMITTED _____ DATE _____
APPROVED _____ DATE _____

LINE IS 2 INCHES
AT FULL SCALE
(IF NOT 2"-SCALE ACCORDINGLY)

FILE NO.: 113-04-01.3

DRAWN BY: AEP
DESIGNED BY: JDA
CHECKED BY: NDU
CHECKED BY: LBH

REVISIONS					
ZONE	REV.	DESCRIPTION	BY	DATE	APP.

UNIVERSITY OF CALIFORNIA,
SANTA BARBARA

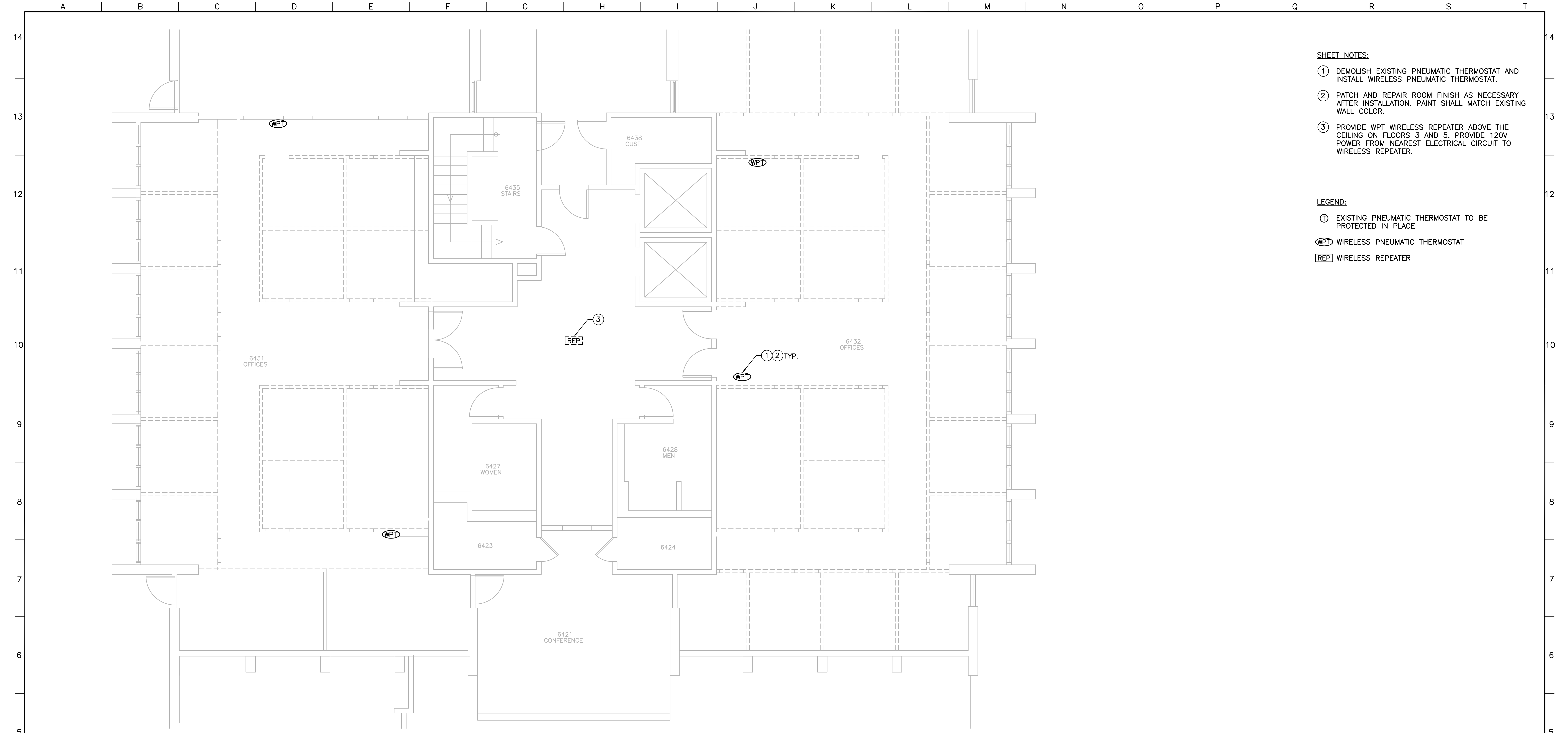
BUILDING ECM SCHEMATIC DESIGN
SOUTH HALL 528 FM130472

FIRST FLOOR PLAN

DATE
6/17/13

DRAWING NUMBER
M1

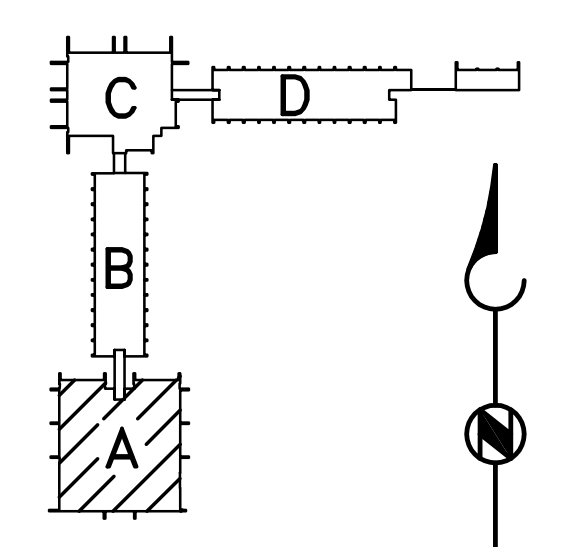
SHEET NUMBER
of



- SHEET NOTES:**
- ① DEMOLISH EXISTING PNEUMATIC THERMOSTAT AND INSTALL WIRELESS PNEUMATIC THERMOSTAT.
 - ② PATCH AND REPAIR ROOM FINISH AS NECESSARY AFTER INSTALLATION. PAINT SHALL MATCH EXISTING WALL COLOR.
 - ③ PROVIDE WPT WIRELESS REPEATER ABOVE THE CEILING ON FLOORS 3 AND 5. PROVIDE 120V POWER FROM NEAREST ELECTRICAL CIRCUIT TO WIRELESS REPEATER.

- LEGEND:**
- ① EXISTING PNEUMATIC THERMOSTAT TO BE PROTECTED IN PLACE
 - WPT WIRELESS PNEUMATIC THERMOSTAT
 - REP WIRELESS REPEATER

TYPICAL SECOND THROUGH SIX FLOOR PLAN
SCALE: 1/4"=1'-0"



SCHEMATIC DESIGN
NOT FOR CONSTRUCTION

GOSS ENGINEERING, INC.
CORONA, CALIFORNIA PH: (951) 340-1977 FX: (951) 340-1090

SUBMITTED _____ DATE _____
APPROVED _____ DATE _____

LINE IS 2 INCHES
AT FULL SCALE
(IF NOT 2"=SCALE ACCORDINGLY)

FILE NO.: 113-04-01.3

DRAWN BY: AEP
DESIGNED BY: JDA
CHECKED BY: NDU
CHECKED BY: LBH

REVISIONS					
ZONE	REV.	DESCRIPTION	BY	DATE	APP.

UNIVERSITY OF CALIFORNIA,
SANTA BARBARA

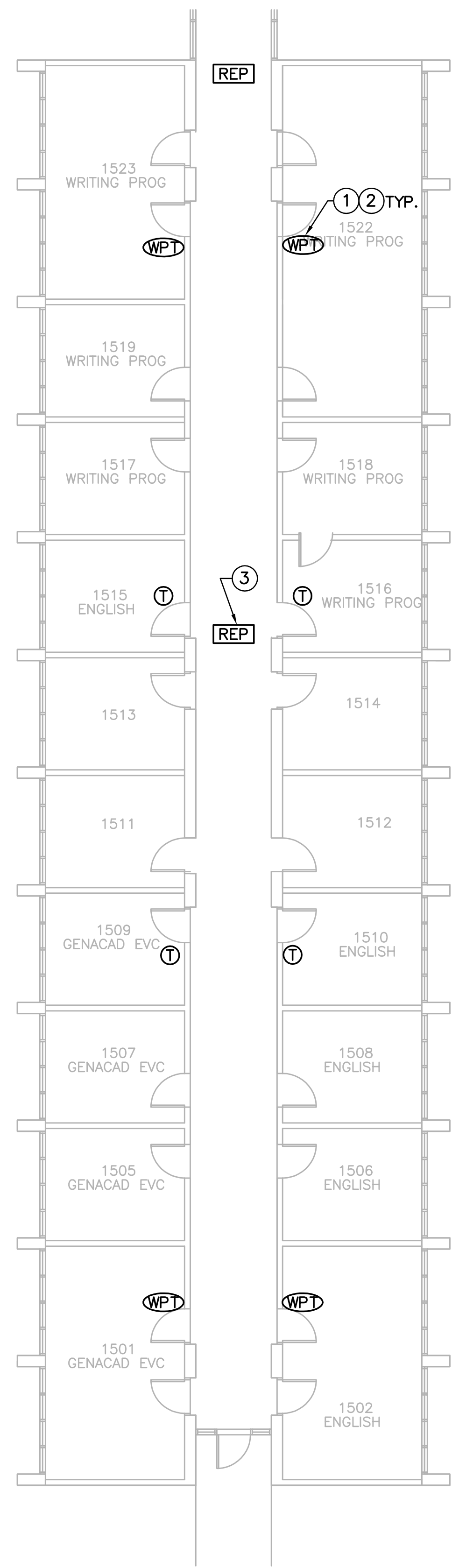
BUILDING ECM SCHEMATIC DESIGN
SOUTH HALL 528 FM130472

TYPICAL SECOND THROUGH SIX
FLOOR PLAN

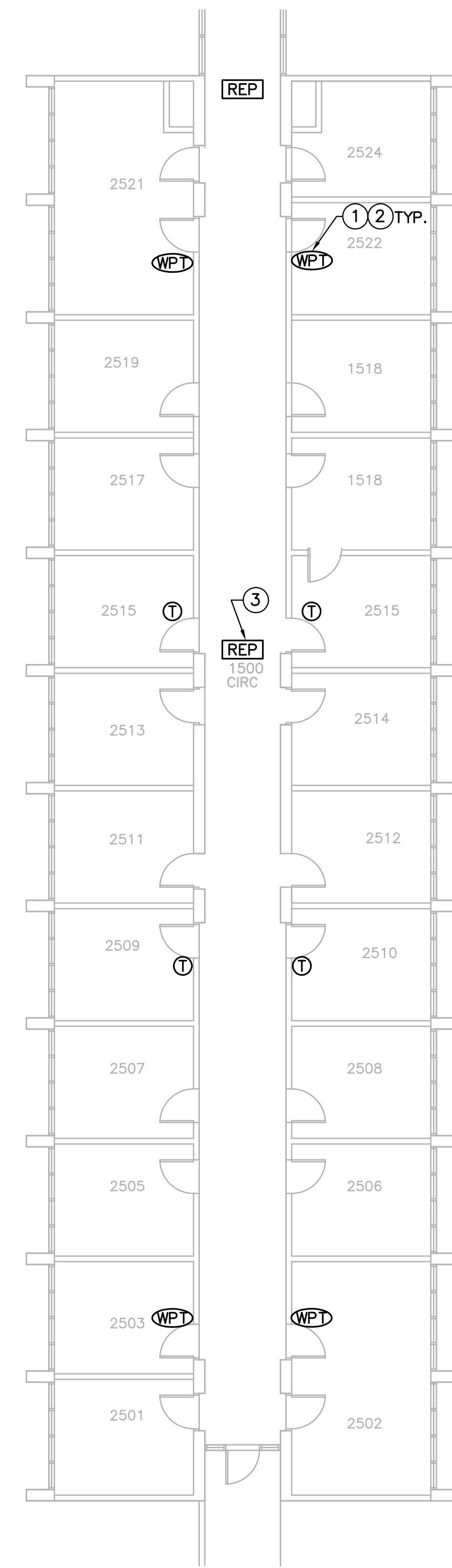
DATE
6/17/13

DRAWING NUMBER
M2

SHEET NUMBER
OF



FIRST FLOOR PLAN
SCALE: 1/8" = 1'-0"



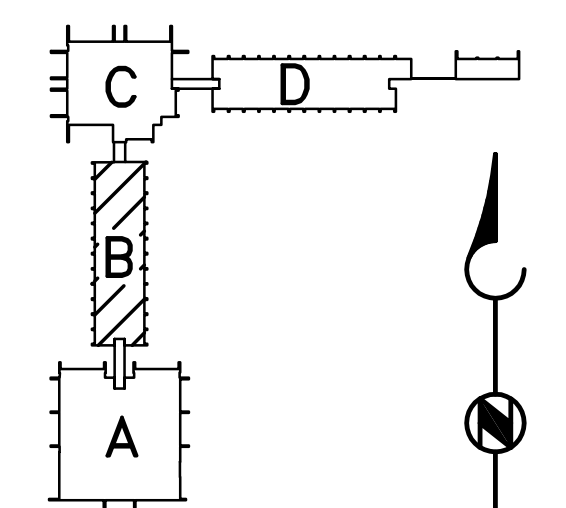
TYPICAL SECOND THROUGH SIX FLOOR PLAN
SCALE: 1/8" = 1'-0"

SHEET NOTES:

- ① DEMOLISH EXISTING PNEUMATIC THERMOSTAT AND INSTALL WIRELESS PNEUMATIC THERMOSTAT.
- ② PATCH AND REPAIR ROOM FINISH AS NECESSARY AFTER INSTALLATION. PAINT SHALL MATCH EXISTING WALL COLOR.
- ③ PROVIDE WPT WIRELESS REPEATER ABOVE THE CEILING. PROVIDE 120V POWER FROM NEAREST ELECTRICAL CIRCUIT TO WIRELESS REPEATER.

LEGEND:

- ⓪ EXISTING PNEUMATIC THERMOSTAT TO BE PROTECTED IN PLACE
- Ⓜ WPT WIRELESS PNEUMATIC THERMOSTAT
- REP WIRELESS REPEATER



KEY PLAN
SCHEMATIC DESIGN
NOT FOR CONSTRUCTION

GOSS ENGINEERING, INC.
CORONA, CALIFORNIA PH: (951) 340-1977 FX: (951) 340-1090
SUBMITTED _____ DATE _____
APPROVED _____ DATE _____

LINE IS 2 INCHES
AT FULL SCALE
(IF NOT 2"-SCALE ACCORDINGLY)
FILE NO.: 113-04-01.3
DRAWN BY: AEP
DESIGNED BY: JDA
CHECKED BY: NDU
CHECKED BY: LBH

REVISIONS					
ZONE	REV.	DESCRIPTION	BY	DATE	APP.

UNIVERSITY OF CALIFORNIA,
SANTA BARBARA
BUILDING ECM SCHEMATIC DESIGN
SOUTH HALL 528 FM130472

FIRST FLOOR PLAN AND TYPICAL
SECOND THROUGH SIX FLOOR PLAN

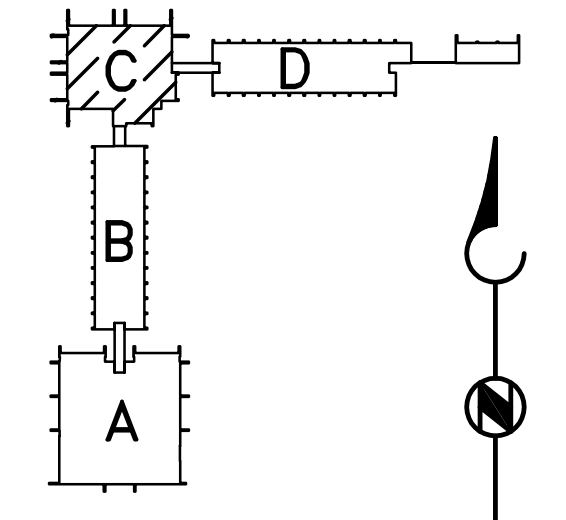
DATE
6/17/13
DRAWING NUMBER
M3
SHEET NUMBER
OF



FIRST FLOOR PLAN
SCALE: 1/4" = 1'-0"

- SHEET NOTES:**
- ① DEMOLISH EXISTING PNEUMATIC THERMOSTAT AND INSTALL WIRELESS PNEUMATIC THERMOSTAT.
 - ② PATCH AND REPAIR ROOM FINISH AS NECESSARY AFTER INSTALLATION. PAINT SHALL MATCH EXISTING WALL COLOR.
 - ③ PROVIDE WPT WIRELESS REPEATER ABOVE THE CEILING. PROVIDE 120V POWER FROM NEAREST ELECTRICAL CIRCUIT TO WIRELESS REPEATER.
 - ④ PROVIDE WALL MOUNTED COMMUNICATION GATEWAY. PROVIDE 120V POWER FROM NEAREST ELECTRICAL CIRCUIT TO COMMUNICATION GATEWAY.

- LEGEND:**
- Ⓣ EXISTING PNEUMATIC THERMOSTAT TO BE PROTECTED IN PLACE
 - ⓌⓅⓉ WIRELESS PNEUMATIC THERMOSTAT
 - ⓇⓈⓅ WIRELESS REPEATER
 - ⓖⓑⓈ GREEN BOX CONTROLLER FLEXIBLE COMMUNICATION GATEWAY



KEY PLAN
SCHEMATIC DESIGN
NOT FOR CONSTRUCTION

GOSS ENGINEERING, INC.
CORONA, CALIFORNIA PH: (951) 340-1977 FX: (951) 340-1090

SUBMITTED _____ DATE _____
APPROVED _____ DATE _____

LINE IS 2 INCHES
AT FULL SCALE
(IF NOT 2"=SCALE ACCORDINGLY)

FILE NO.: 113-04-01.3

DRAWN BY: AEP
DESIGNED BY: JDA
CHECKED BY: NDU
CHECKED BY: LBH

REVISIONS					
ZONE	REV.	DESCRIPTION	BY	DATE	APP.

UNIVERSITY OF CALIFORNIA,
SANTA BARBARA

BUILDING ECM SCHEMATIC DESIGN
SOUTH HALL 528 FM130472

FIRST FLOOR PLAN

DATE
6/17/13

DRAWING NUMBER
M4

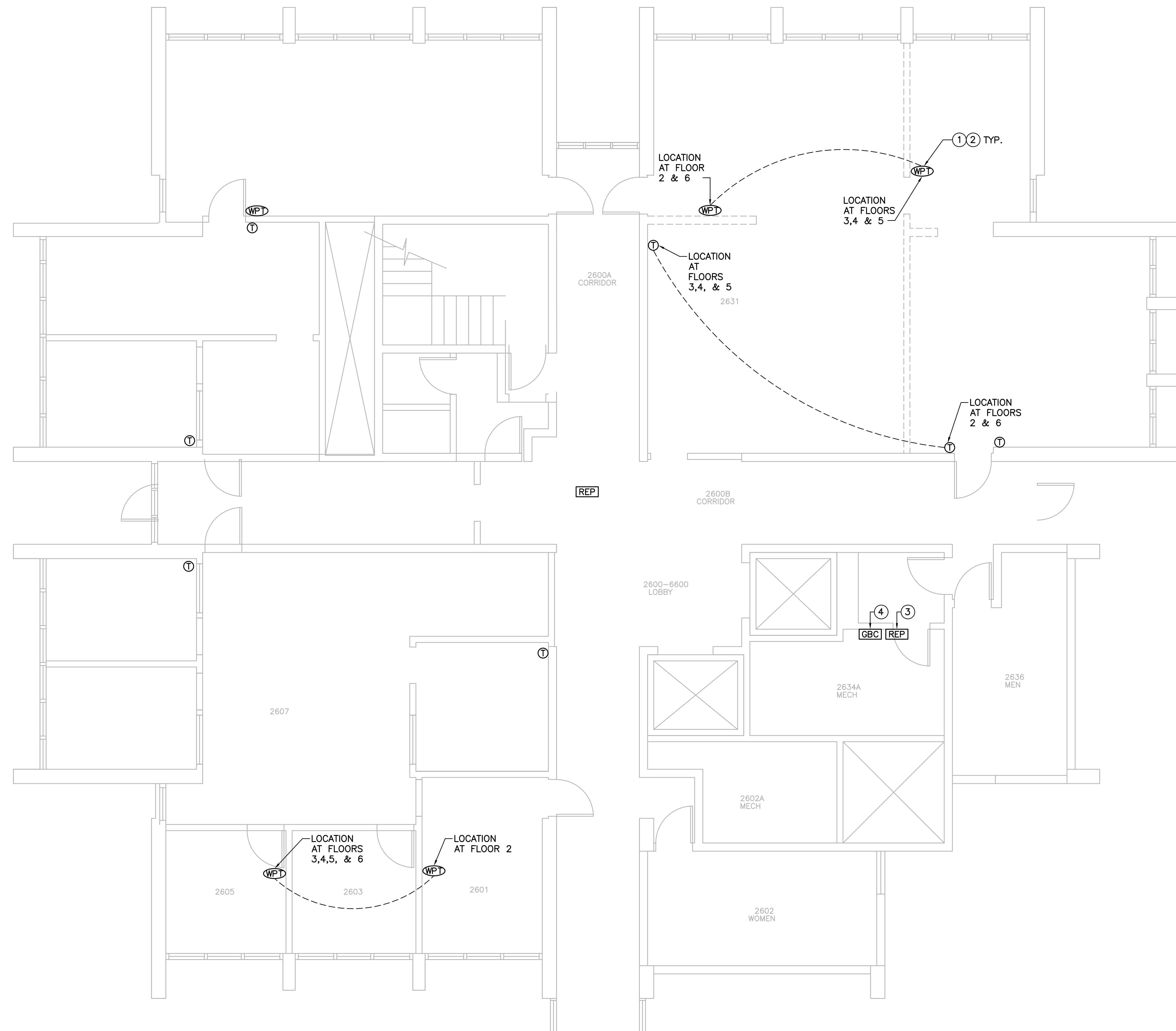
SHEET NUMBER
of

SHEET NOTES:

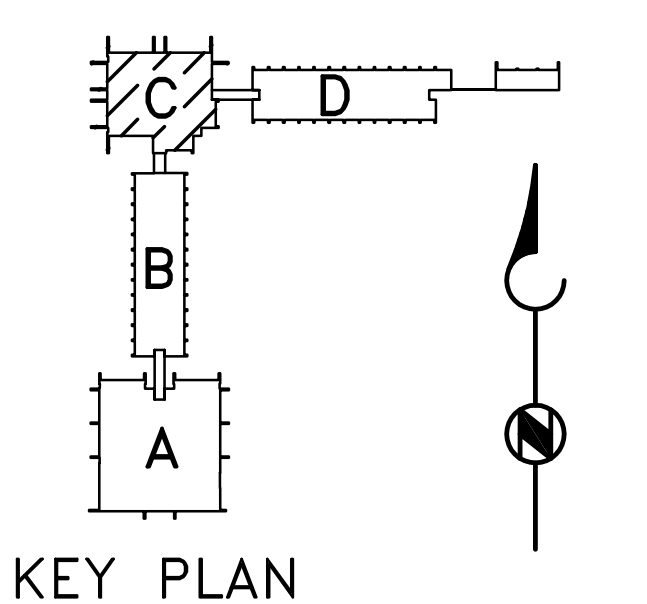
- ① DEMOLISH EXISTING PNEUMATIC THERMOSTAT AND INSTALL WIRELESS PNEUMATIC THERMOSTAT.
- ② PATCH AND REPAIR ROOM FINISH AS NECESSARY AFTER INSTALLATION. PAINT SHALL MATCH EXISTING WALL COLOR.
- ③ PROVIDE WPT WIRELESS REPEATER ABOVE THE CEILING. PROVIDE 120V POWER FROM NEAREST ELECTRICAL CIRCUIT TO WIRELESS REPEATER.
- ④ PROVIDE WALL MOUNTED COMMUNICATION GATEWAY. PROVIDE 120V POWER FROM NEAREST ELECTRICAL CIRCUIT TO COMMUNICATION GATEWAY.

LEGEND:

- ① EXISTING PNEUMATIC THERMOSTAT TO BE PROTECTED IN PLACE
- WPT WIRELESS PNEUMATIC THERMOSTAT
- REP WIRELESS REPEATER
- GBC GREEN BOX CONTROLLER FLEXIBLE COMMUNICATION GATEWAY



TYPICAL SECOND THROUGH SIX FLOOR PLAN
SCALE: 1/4" = 1'-0"



SCHEMATIC DESIGN
NOT FOR CONSTRUCTION

GOSS ENGINEERING, INC.
CORONA, CALIFORNIA PH: (951) 340-1977 FX: (951) 340-1090
SUBMITTED _____ DATE _____
APPROVED _____ DATE _____

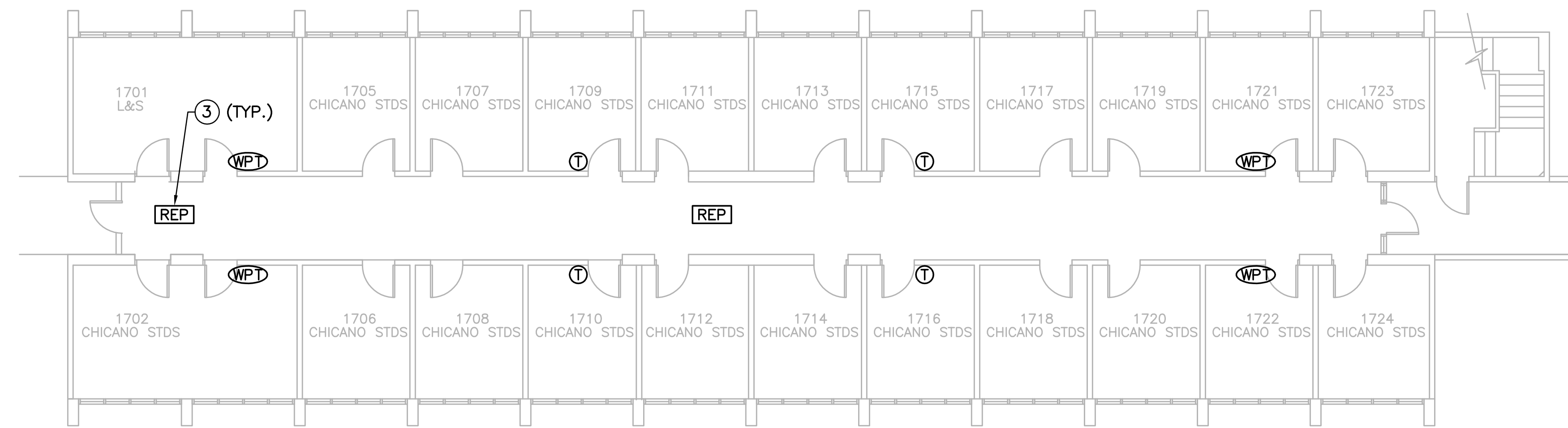
LINE IS 2 INCHES
AT FULL SCALE
(IF NOT 2"=SCALE ACCORDINGLY)
FILE NO.: 113-04-01.3
DRAWN BY: AEP
DESIGNED BY: JDA
CHECKED BY: NDU
CHECKED BY: LBH

REVISIONS					
ZONE	REV.	DESCRIPTION	BY	DATE	APP.

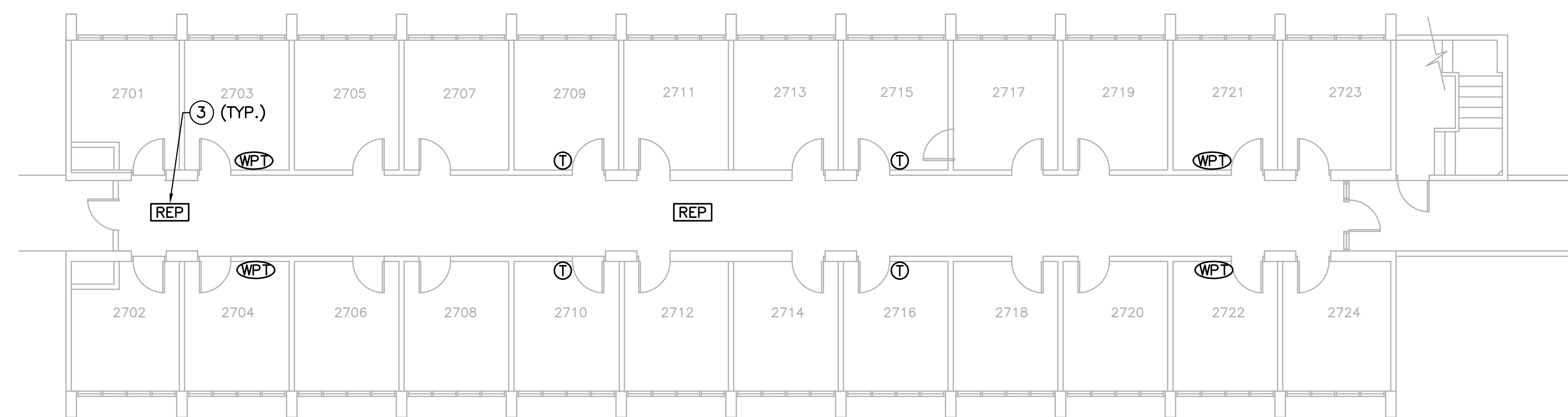
UNIVERSITY OF CALIFORNIA,
SANTA BARBARA
BUILDING ECM SCHEMATIC DESIGN
SOUTH HALL 528 FM130472

TYPICAL SECOND THROUGH SIX
FLOOR PLAN

DATE
6/17/13
DRAWING NUMBER
M5
SHEET NUMBER
OF



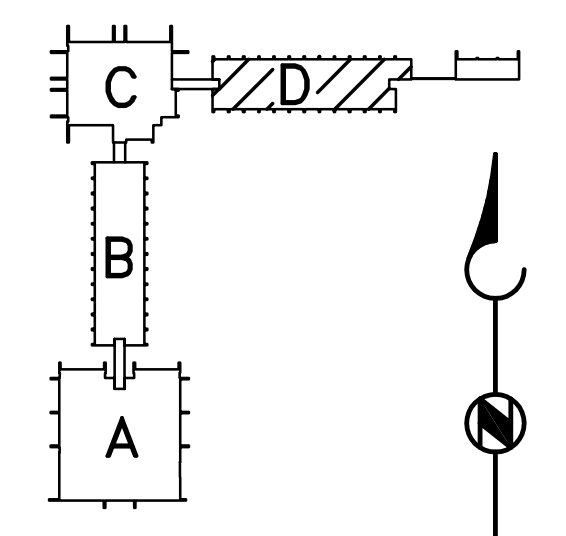
FIRST FLOOR PLAN
SCALE: 1/8"=1'-0"



TYPICAL SECOND THROUGH SIX FLOOR PLAN
SCALE: 1/8"=1'-0"

- SHEET NOTES:**
- ① DEMOLISH EXISTING PNEUMATIC THERMOSTAT AND INSTALL WIRELESS PNEUMATIC THERMOSTAT.
 - ② PATCH AND REPAIR ROOM FINISH AS NECESSARY AFTER INSTALLATION. PAINT SHALL MATCH EXISTING WALL COLOR.
 - ③ PROVIDE WPT WIRELESS REPEATER ABOVE THE CEILING. PROVIDE 120V POWER FROM NEAREST ELECTRICAL CIRCUIT TO WIRELESS REPEATER.

- LEGEND:**
- Ⓣ EXISTING PNEUMATIC THERMOSTAT TO BE PROTECTED IN PLACE
 - ⓌⓅⓉ WIRELESS PNEUMATIC THERMOSTAT
 - ⓇⓈⓅ WIRELESS REPEATER



KEY PLAN
SCHEMATIC DESIGN
NOT FOR CONSTRUCTION

GOSS ENGINEERING, INC.
CORONA, CALIFORNIA PH: (951) 340-1977 FX: (951) 340-1090
SUBMITTED _____ DATE _____
APPROVED _____ DATE _____

LINE IS 2 INCHES
AT FULL SCALE
(IF NOT 2"=SCALE ACCORDINGLY)
FILE NO.: 113-04-01.3
DRAWN BY: AEP
DESIGNED BY: JDA
CHECKED BY: NDU
CHECKED BY: LBH

REVISIONS					
ZONE	REV.	DESCRIPTION	BY	DATE	APP.

UNIVERSITY OF CALIFORNIA,
SANTA BARBARA
BUILDING ECM SCHEMATIC DESIGN
SOUTH HALL 528 FM130472

FIRST FLOOR PLAN AND TYPICAL
SECOND THROUGH SIX FLOOR PLAN

DATE
6/17/13
DRAWING NUMBER
M6
SHEET NUMBER
of